

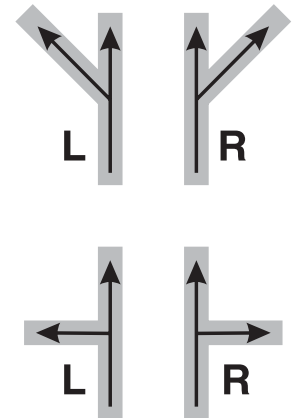
# Pallet diverter function



Standard functions from FlexLink

5332EN-1

## Pallet diverter function routes pallets between conveyors



**A diverter function is used to guide selected pallets from a main conveyor track into a satellite conveyor.**

(If it is desired to re-circulate the pallets on the satellite until they are ready to return to the highway, a merge/divert function should be used instead.)

The diverter function can be delivered in components or as a complete functional unit including all required hardware such as conveyor beams, guide rails, pallet stops, sensor brackets, sensors and RFID reader. The function has fixed outer dimensions with a clearly defined interface to the surrounding conveyors.

Each diverter function is designed individually using the FlexLink ordering tool.

### Standard features

- One 45 or 90° wheel
- Conveyor beams with connecting strips at the ends
- Guide rails with connecting strips at the ends
- One divert device
- One pallet stop

### Options

The following options must be specified during the configuration process:

- Pallet size
- Left or right (photo shows right-hand version)
- Angle 45 or 90°
- Guide rail width 42 mm or 101 mm
- SICK sensors included
- Sensor brackets
- M12 or M18 sensors
- Sensor type on cylinders
- RFID reader

Conveyor chain and slide rails must be ordered separately.

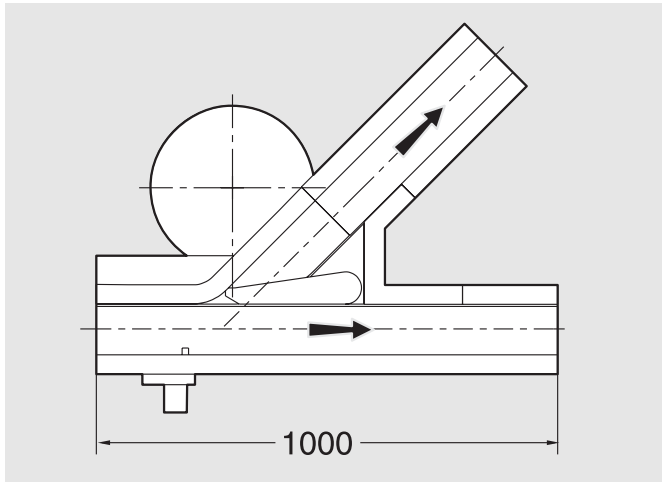
### Basic dimensions

See next page.

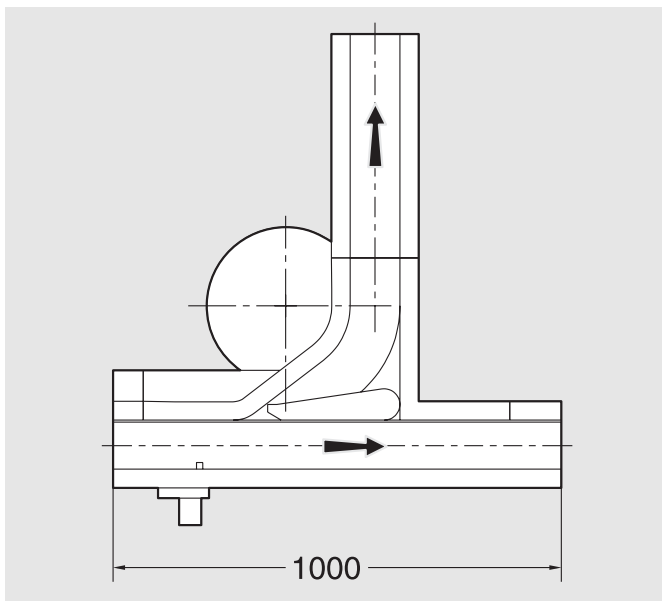
## Pallet diverter function

### Basic dimensions

*45° version (left-hand version)*



*90° version (left-hand version)*



For more detailed information, see the FlexLink catalogue, sections XK and XKP.

### Ordering information

For more information, and for access to the FlexLink ordering tool, please contact your local FlexLink office.

FlexLink on the internet: <http://www.flexlink.com>.

For more information, please contact your local FlexLink sales unit. Specifications are subject to change without notice.