

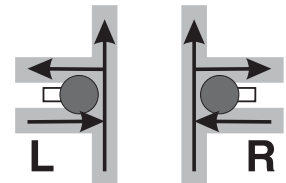
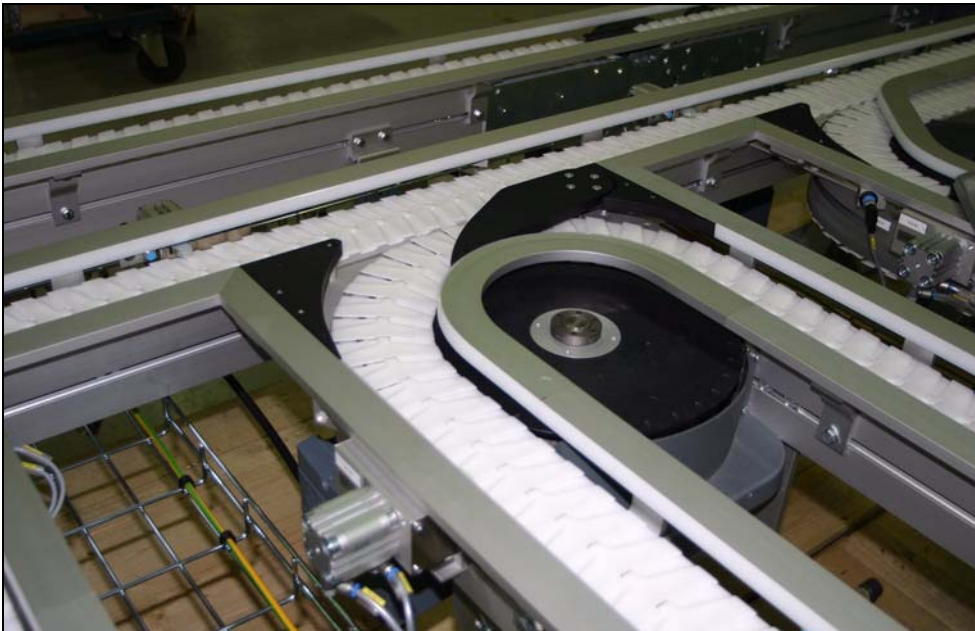
Pallet divert/merge function with wheel bend drive



Standard functions from FlexLink

5335EN-1

Pallet merge/divert function has integrated wheel bend drive unit



A combined divert/merge function is used to guide selected pallets from a main conveyor track into a satellite conveyor and back. The combination also permits re-circulating the pallets on the satellite until the pallet is ready to return to the highway. This unit also includes a horizontal bend drive unit that is equipped with a variable speed gearmotor.

The merge function can be delivered in components or as a complete functional unit including all required hardware such as conveyor beams, guide rails, pallet stops, sensor brackets, sensors and RFID reader. The function has fixed outer dimensions with a clearly defined interface to the surrounding conveyors.

Each merge function is designed individually using the FlexLink ordering tool.

Standard features

- One 180° horizontal bend drive unit
- Conveyor beams with connecting strips at the ends
- Guide rails with connecting strips at the ends
- One divert/merge device
- Two pallet stops

Options

The following options must be specified during the configuration process:

- Pallet size
- Left or right (photo shows right hand version)
- Guide rail width 42 mm or 101 mm
- SICK sensors included
- Sensor brackets
- M12 or M18 sensors
- Sensor type on cylinders
- RFID reader
- Drip pan
- Conveyor speed
- Hybrid cable
- Field distributor
- Communication interface

Conveyor chain and slide rails must be ordered separately.

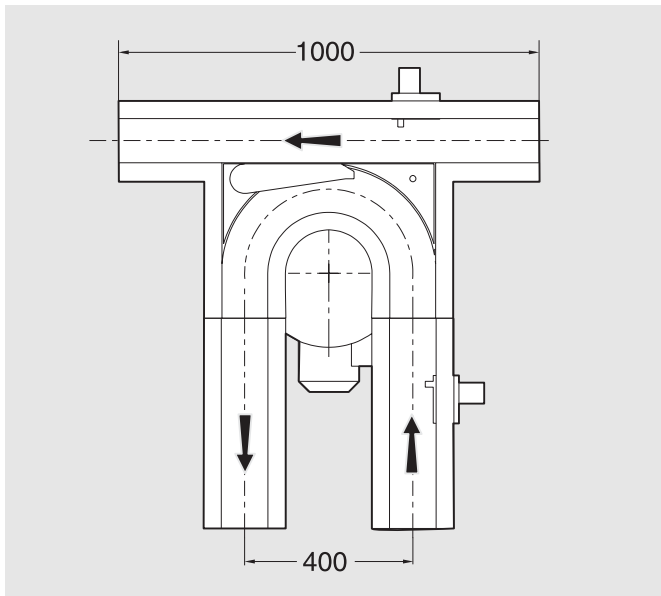
Basic dimensions

See next page.

Pallet divert/merge function with wheel bend drive

Basic dimensions

Left-hand version



For more detailed information, see the FlexLink catalogue, sections XK and XKP.

Ordering information

For more information, and for access to the FlexLink ordering tool, please contact your local FlexLink office.

FlexLink on the internet: <http://www.flexlink.com>.

For more information, please contact your local FlexLink sales unit. Specifications are subject to change without notice.