

# XL pallet handling components

## Contents

System information.....	113	Guide rail.....	116
Pallet .....	114	Guide rail bracket .....	116
Pallet accessories.....	114	Pallet locating station .....	117
Pallet XLPP 100×100 .....	115	Pallet stop cylinder .....	118

## System information



### Pallet handling products for conveyor system XL

The pallet handling components for conveyor system XL are designed for loads up to 3 kg. The maximum size of the products on the pallets depends on the shape of the products and the location of their centre of gravity.

The XL pallet system includes a special flanged guide rail which prevents pallets from climbing when accumulated.

Guide rail brackets specifically designed for the pallet track width are available. The system also includes pre-bent guide rails for bends.

### Application areas

Examples of application areas are transport and assembly of spark plugs, gear wheels, fuel injectors, hydraulic pistons, headlights, brake cylinders, cellular phones, and harddisk drives.

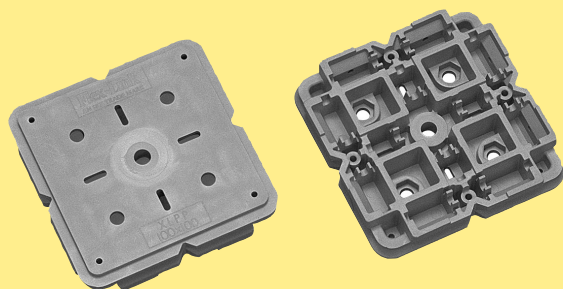
### Technical characteristics

Pallet size .....	100 mm × 100 mm × 22 mm
Pallet weight .....	0,11 kg
Maximum load on pallet.	3,0 kg (including pallet and fixture)

P0  
X45  
XS  
XL  
XLP  
X85  
X85P  
XH  
XK  
XKP  
X180  
X300  
GR  
CS  
XT  
WL  
XC  
XF  
XD  
XLX  
X85X  
X180X  
X300X  
GRX  
CSX  
ELV  
CTL  
FST  
TR  
APX  
IDX

## Pallet

### Pallet 100×100



Pallet 100 mm × 100 mm

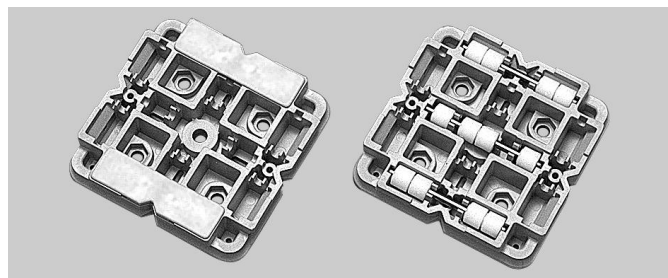
**XLPP 100×100**

Mineral reinforced PPE/PA.

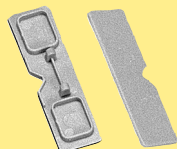
Pallet weight: 0,11 kg. Max load on pallet: 3 kg.

See page 115 for detailed pallet dimensions

## Pallet accessories



### Slide block for pallet



Slide block for pallet

**XLPS 67**

Polyamide

1 slide block. 2 slide blocks are needed for each pallet.

Note. Must be ordered in multiples of 10

### Shaft and roller kit



Shaft and roller kit

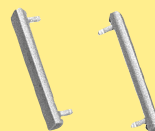
**3904055**

Rollers: Polyacetal resin

Shaft: Stainless steel

Kit contains 3 shafts and 12 rollers. One kit is needed for each pallet.

### Shock absorber



Shock absorber

**3904052**

Thermoplastic ethylene + polypropylene

1 shock absorber. 2 shock absorbers are needed for each pallet.

### Initiator plate



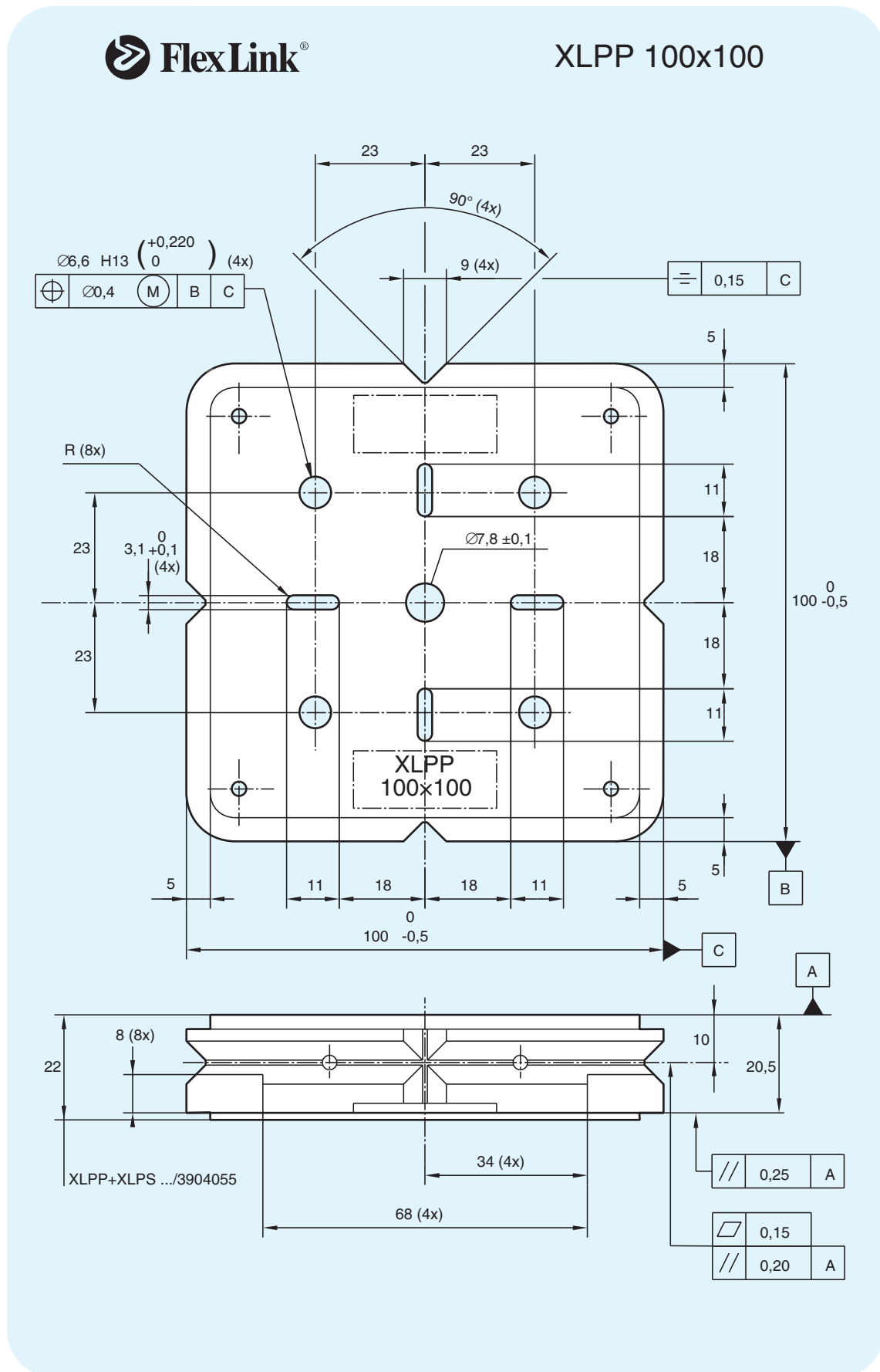
Initiator plate

**XLPL 30×20**

Steel. Including screw.

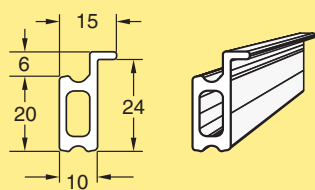
1 or 2 initiator plates can be fitted to a pallet.

Note. Must be ordered in multiples of 25



## Guide rail

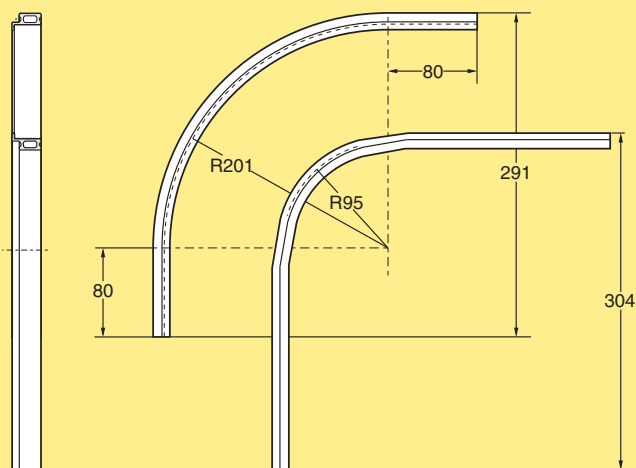
### Straight guide rail



Guide rail for XL pallets  
Length 3 m

**XLRS 3×10 FL**

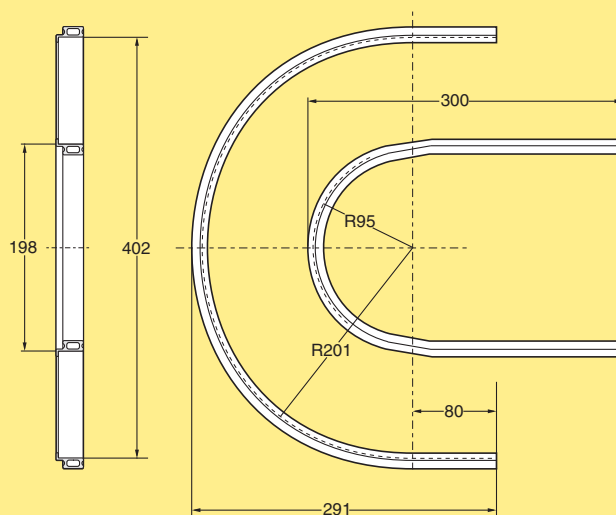
### Guide rails for pallets in 90° bends



Outer guide rail for 90° bend  
Inner guide rail for 90° bend

**3904897**  
**3905239**

### Guide rails for pallets in 180° bends

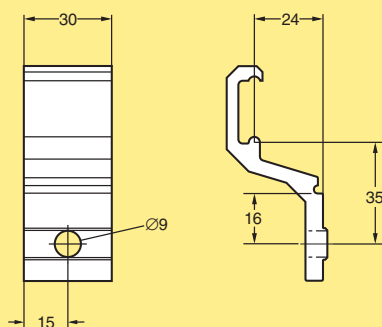


Outer guide rail for 180° bend  
Inner guide rail for 180° bend

**3904896**  
**3905238**

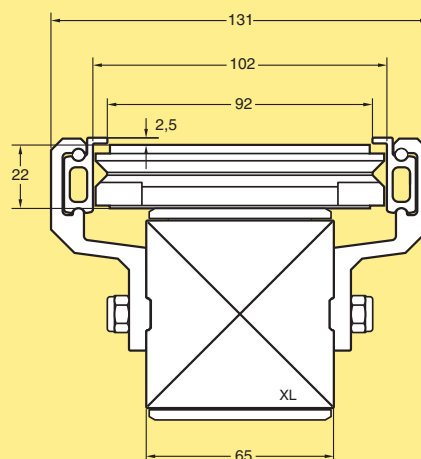
## Guide rail bracket

### Guide rail bracket

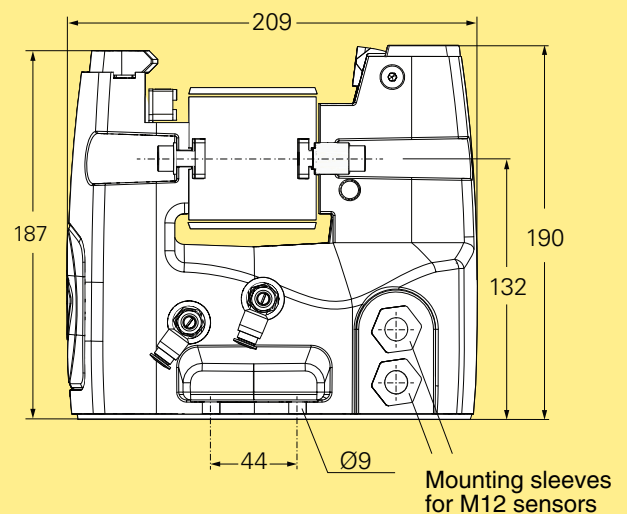
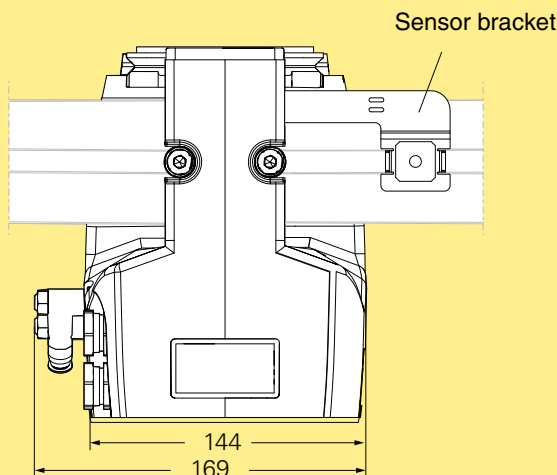


Guide rail bracket for XL pallets **XLRB 29×36**

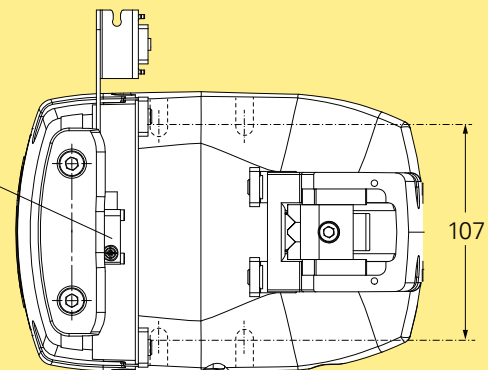
*To be used with 10 mm wide guide rail. Use spring pins XLAP 28 to secure the guide rails to the brackets.*



Pallet locating station



Pallet in position sensor (included)



Pneumatic locating station

**XLPX 100 B**

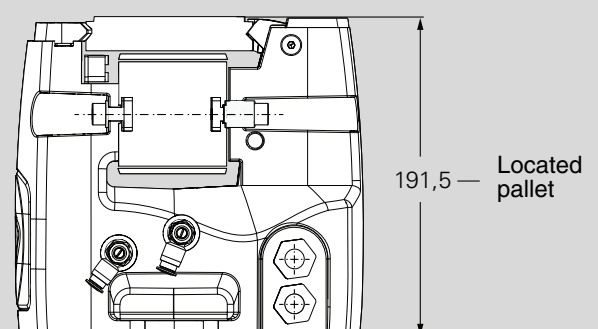
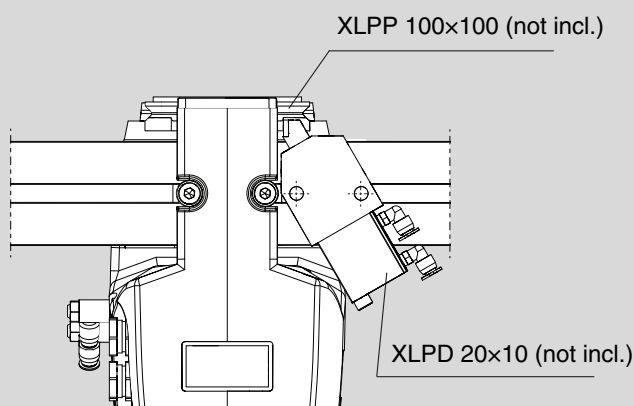
Frame: cast aluminium. Horizontal and cross wedges: hardened steel.  
Cylinder connection 6 mm

Locating accuracy:  $\pm 0,1$  mm. Locating force at 0,6 MPa: 460 N. Max vertical force including pallet weight: 300 N.

T-bolts and nuts for mounting the locating station to the conveyor beam are included. Mounting hardware for connection to a support structure must be ordered separately.

Proximity sensors  $\varnothing 12$  mm with a sensing range of 8 mm must be used.

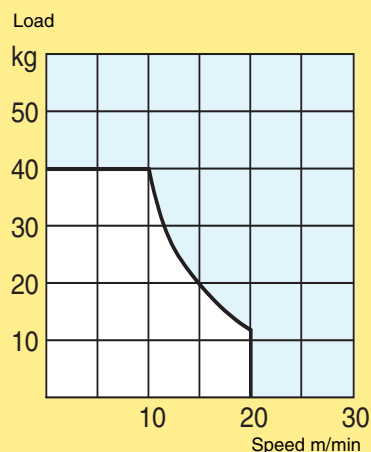
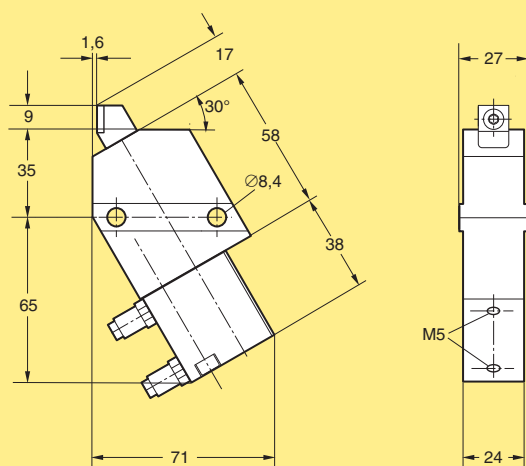
Locating station with pallet and stop cylinder





# Pallet stop cylinder

## Pallet stop cylinder



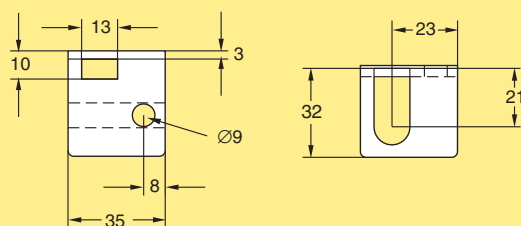
Pneumatic stop cylinder  
Double-actuated

**XLPD 20x10**

Housing, cover: anodized aluminium.  
Plunger: polyamide with steel top.  
Stroke: 10 mm. Theoretical force at 0,6 MPa: 130 N (minus direction). For use with cylinder position sensors. Including Ø6 pipe connections and the necessary mounting hardware.  
The pneumatic stop includes an integrated spring for stop out if air supply is cut off.

The diagram shows the maximum permissible weight of a group of pallets (product weight + pallet weight) that the stop cylinder is capable of stopping, as a function of the conveyor speed.

## Bracket for proximity switch



Bracket for proximity switch  
Ø12 mm

**XMPB 12**

Anodized aluminium

## Pallet stop cylinder on conveyor beam

