



## Chain cleaning module for dry cleaning

The inline chain cleaning module for dry cleaning is designed to run continuously. The result is a cleaner chain that allows longer production runs and less frequent maintenance.

### **BENEFITS**

The chain cleaner prevents dust or debris build up on the chain. It allows continuous running of the line without the need to stop the conveyor and remove the chain to clean by hand.

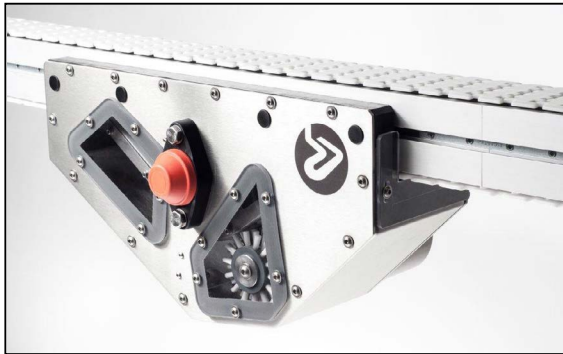
### **STANDARD FEATURES**

- **Robust** – the system is robust and designed to operate in situations where there is likely to be a high degree of dry dust or debris contamination.
- **Simple installation** – mount to conveyors using standard fittings.
- **Compact** – Small footprint so that it is easy to install.
- **Clean** – clean design with sloping faces and minimum areas for fluid or dirt to build up.
- **Safe** – fully guarded design.

# Chain cleaning module for dry cleaning

## System information

The cleaner unit is available for aluminium conveyor systems XS, XL, X65, X85, XH and XK.



## Operating requirements

### Air supply

Connection of air system is made by G 1/2" internal thread connection - minimum pressure for air is 6 Bar with a flow rate of maximum 150 m<sup>3</sup>/h.

### Drainage/ Drying Vacuum

Vacuum attachment is made by Ø32 hose connection. Vacuum requirements are 24,8 kPa minimum with a vacuum of 61 l/second.

### Earthing

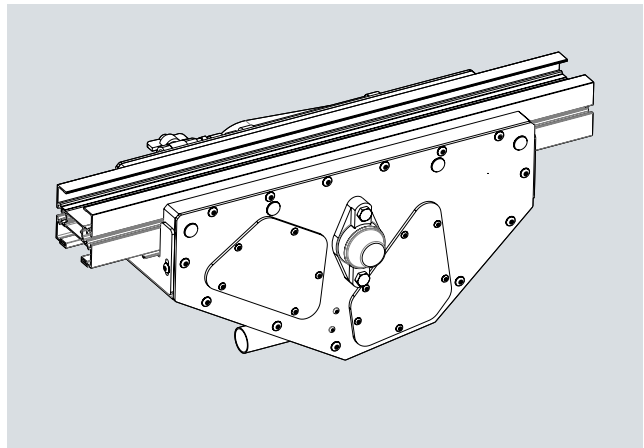
An earthing point is located on the rear face.

## Technical characteristics

Minimum top of chain height	300 mm
Maximum conveyor length	20 m
Maximum conveyor speed	50 m/min

## Ordering information

### Chain cleaning module for dry cleaning



Unit XS	<b>8080626</b>
Unit XL	<b>8080627</b>
Unit X65	<b>8080628</b>
Unit X85	<b>8080570</b>
Unit XH	<b>8080629</b>
Unit XK	<b>8080630</b>

*Note. This unit is designed for plain chains only. 700 mm long beam section is included.*

## Spare parts

See separate document 5852EN-1 Spare parts Chain Cleaning module for dry cleaning