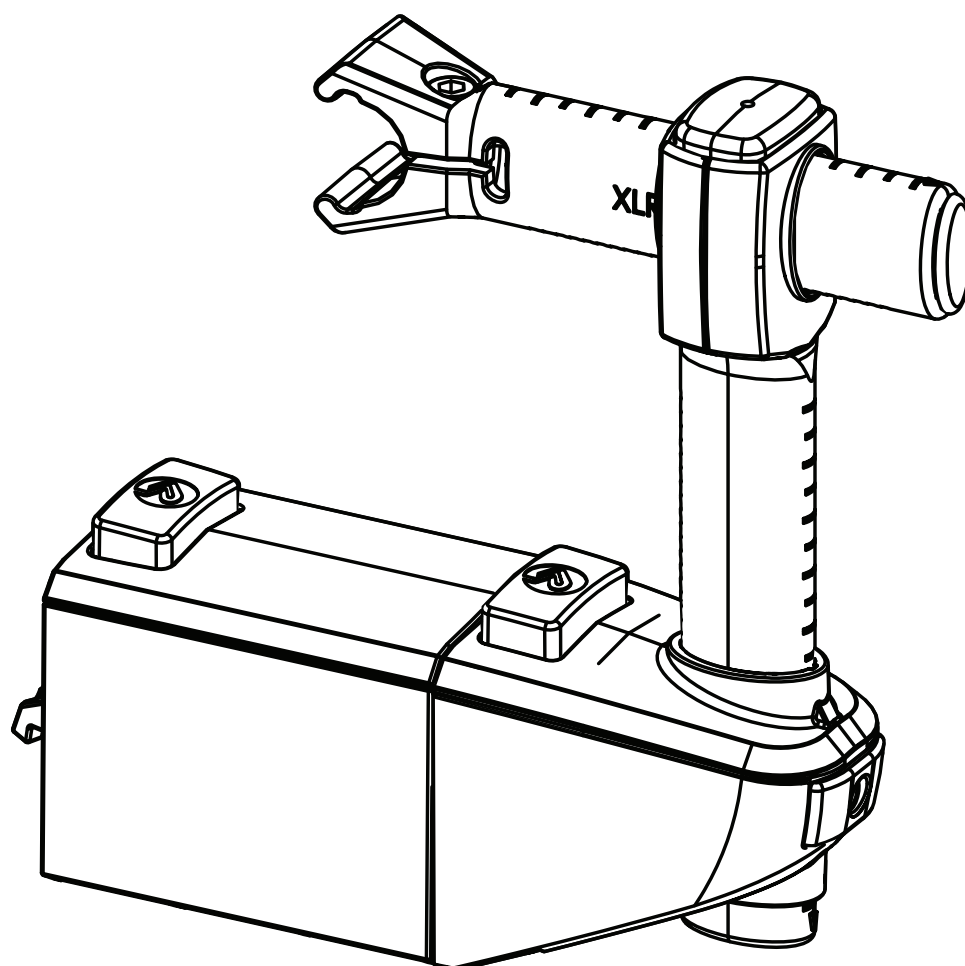


MOUNTING INSTRUCTION



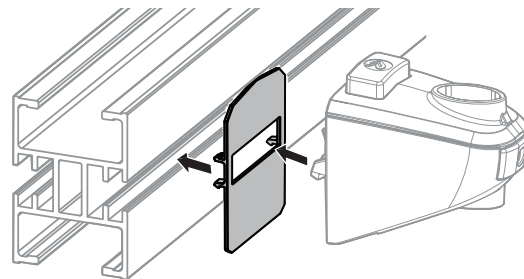
QUICKGUIDE

Guide rail system



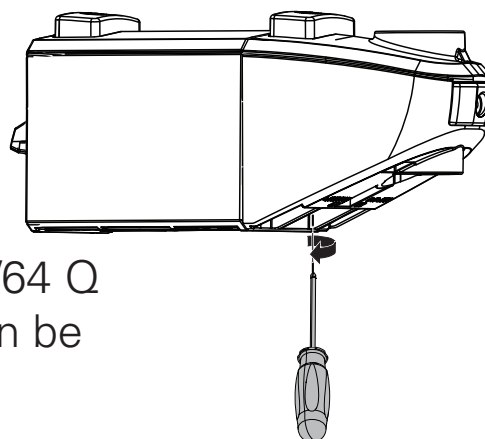
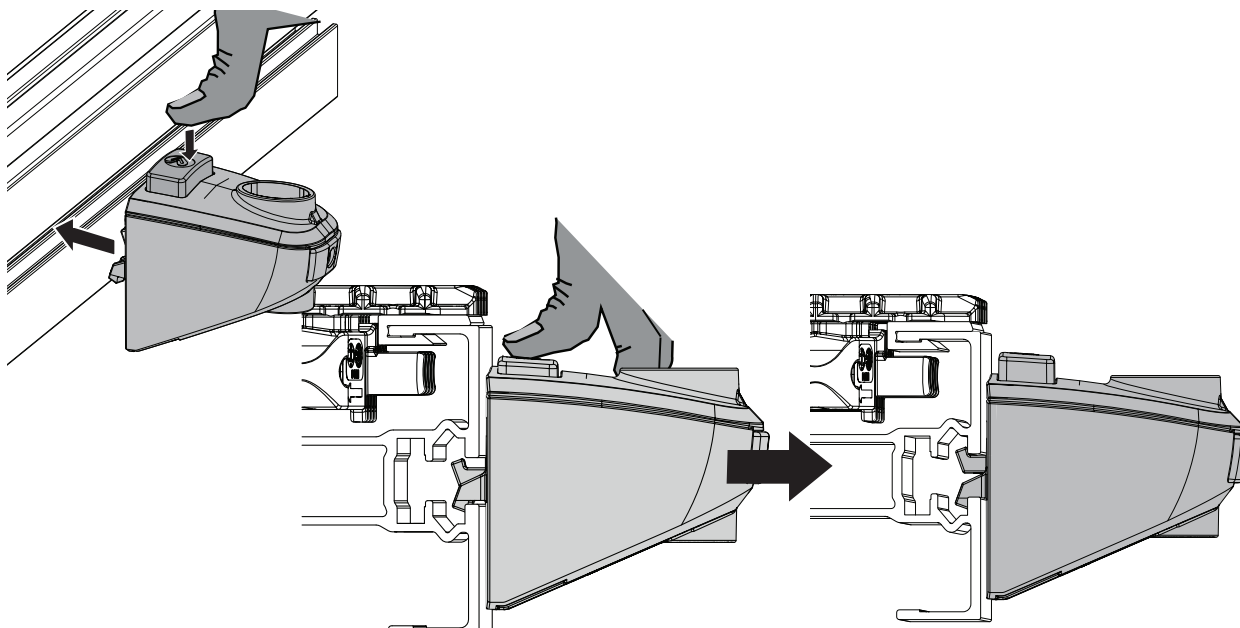
a coesia company

Use adapter XLRD OQ for beams
in systems: XS, XL, XM and XH

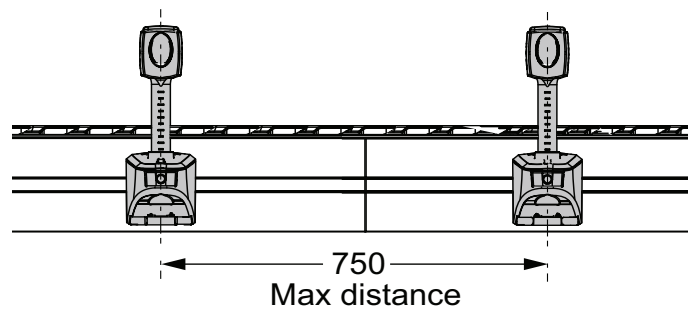
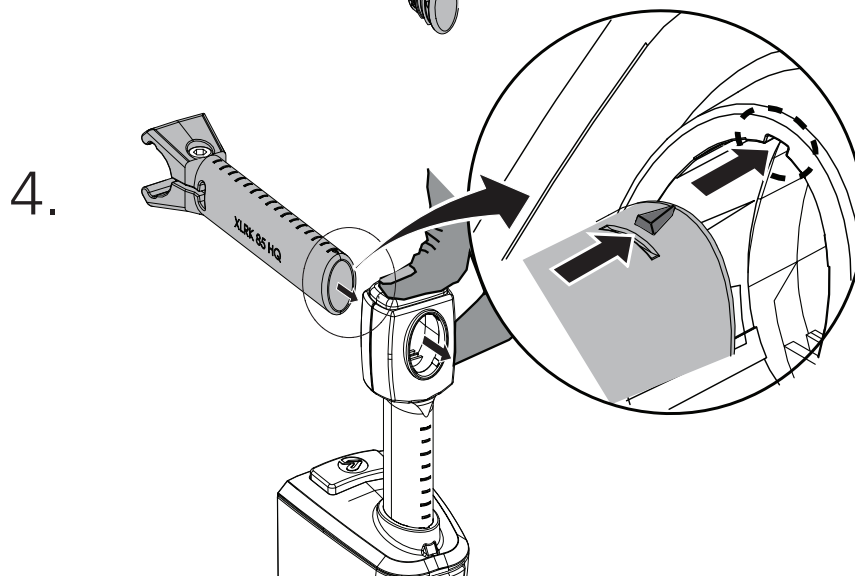
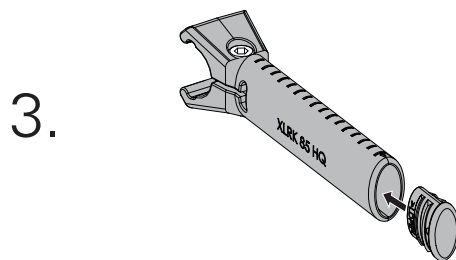
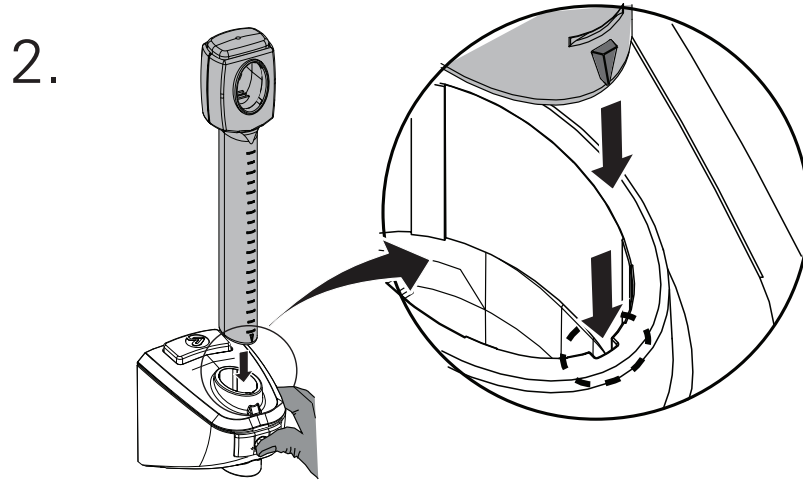


Tip: Mount one complete guide rail bracket kit on the beam for correct measurements. Assemble the rest of the kits on a mounting table by copying the first kit. Click kits onto beam when complete.

1. XLRF 46/64 Q & XLRD 36/72 Q



When XLRD 36/72 Q + XLRF 46/64 Q
are used. The following screw can be
tightened for stability.



Optional: XLAS 2,9x8 RTS 

