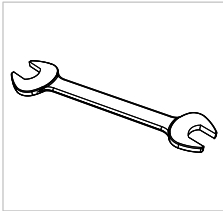


PRE-REQUISITES

Recommended tools



SAFETY



WARNING
The system must not be
operated without safety
equipment properly
mounted.

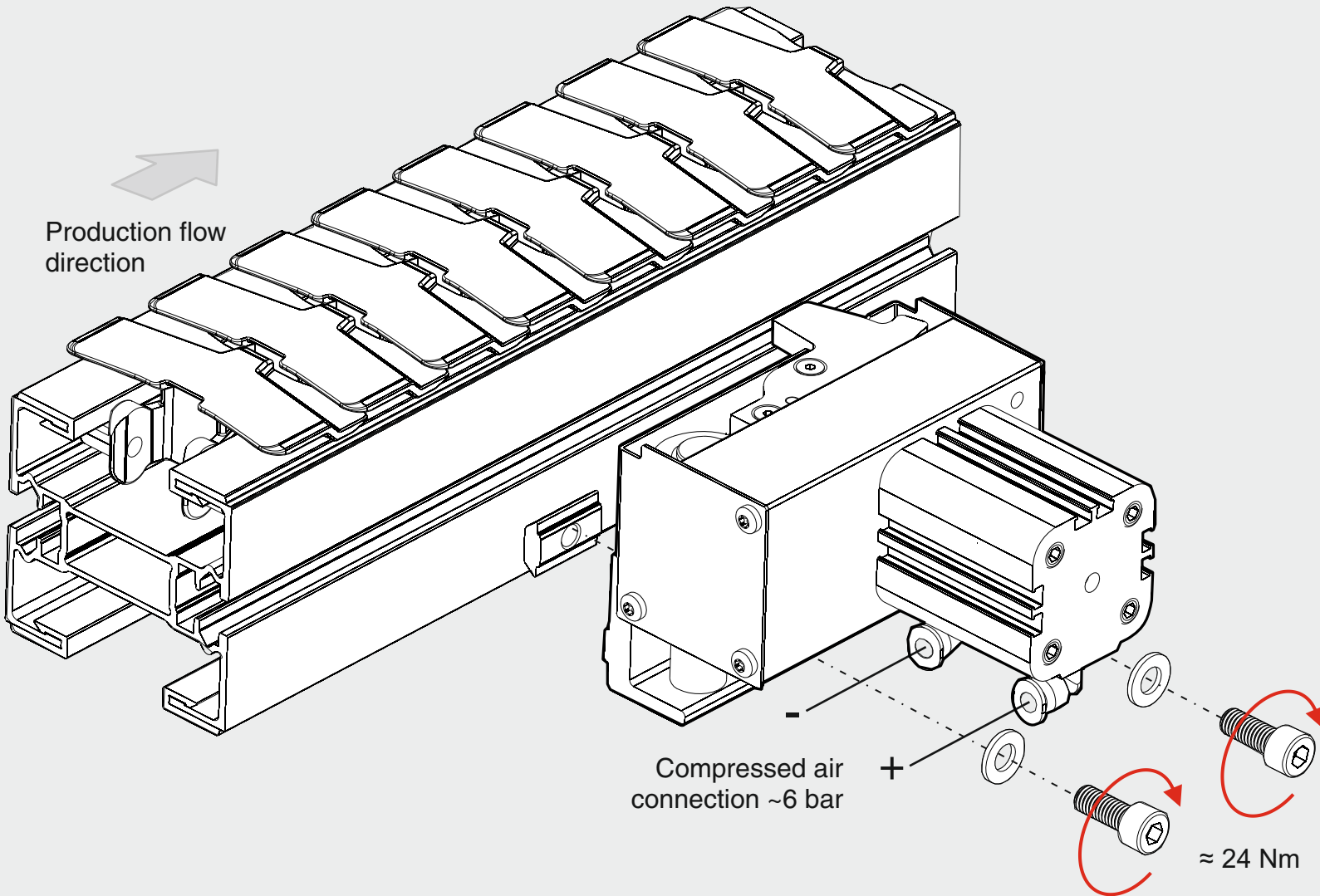
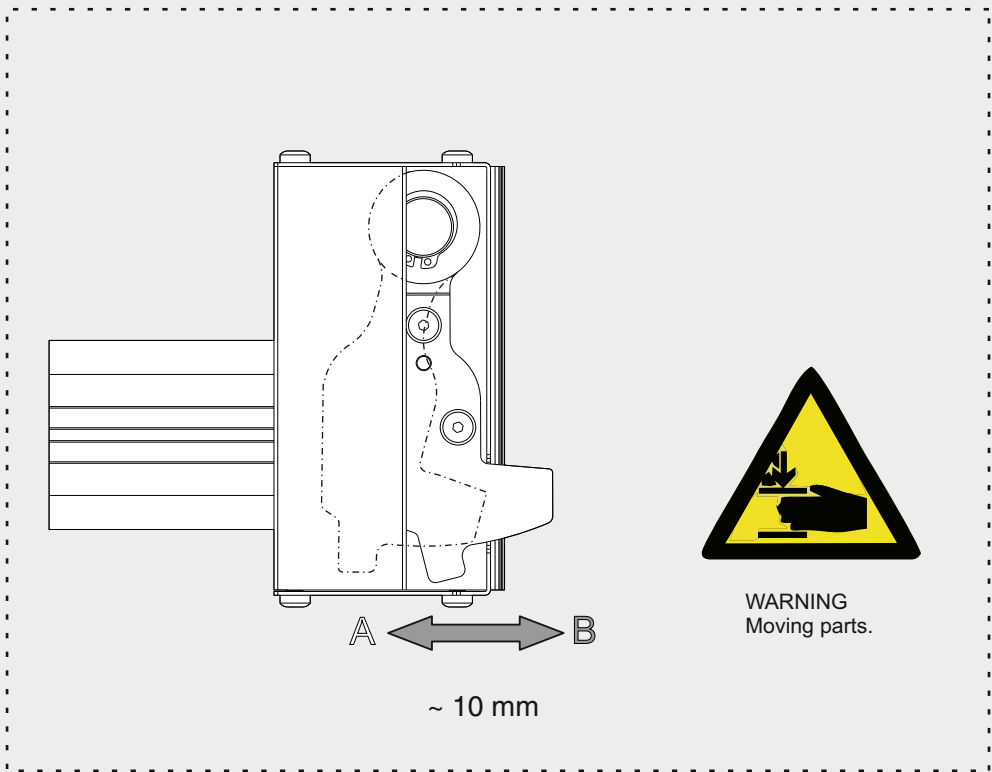
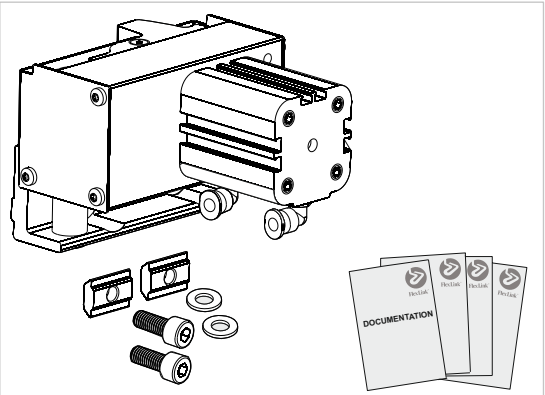


WARNING
At installation, maintenance
and service, make sure the
motor is shut off.



WARNING
Moving parts.

COMPONENTS



EC Declaration of Incorporation Partly completed machinery



5112918-05

FlexLink Components AB
SE-41550 Göteborg
Sweden

We hereby declare that the following equipment is intended to be incorporated into a FlexLink conveyor system and thereby forming a machine. Operation is prohibited until it has been determined that the machine in which these products are incorporated, has been declared in conformity with the Machinery Directive 2006/42/EC, together with amendments which have entered into force as of the date of issue of this declaration, with particular reference to the essential health and safety requirements in connection with the design, construction and manufacture of the below specified equipment.

- Pneumatic stop XKPD 32x15 C

Corresponding EC directives:

Applied transposed harmonized European standards:

EN ISO 14121-1 Safety of machinery – Risk assessments

EN ISO 12100-1 Safety of Machinery - Basic terminology, methodology

EN ISO 12100-2 Safety of Machinery - Technical principles

FlexLink Components AB

Svante Anderholm
Chief Operating Officer

Flexlink Components AB

Anders Jonsson
Responsible Technical file

FlexLink Components AB

Telephone: +46-31-337 31 00
Fax: +46-31-337 22 33
www.flexlink.com

SE-415 50 Göteborg
Sweden

ASSEMBLY INSTRUCTION

Pneumatic Stop XKPD 32x15 C

