

End drive unit (24V)	1
Complete unit	
XUEB L B / XUEB R B and XUEB L / XUEB R.....	1
Basic unit 5113189	2
End drive unit (380V - 440V)	3
Complete unit XUEB ML_ / XUEB MR_	
0-unit XUEB ML0 / XUEB MR0.....	3
Basic unit XUEB 0 U	4
Intermediate drive unit (24V)	5
Complete unit	
XUER L B / XUER R B and XUER L / XUER R.....	5
Intermediate drive unit (380V - 440V)	6
Complete unit XUER M_A	
0-unit XUER M0 A.....	6
Basic unit	7
XUER 0 U A (380 - 440V)	
5125160 (24V)	7
Idler end unit XUEJ 50	9
Diverter	11
Mergers	12
Combined Diverter/Merger	13
Transfer	14
Stop	15
Locating Station	16
Spare parts Slide rail - X45	17
Spare parts Chains - X45	19
Spare parts Guide rail cover - X45	21

© Copyright FlexLink 2026

The contents of this publication are the copyright of the publishers and may not be reproduced (even extracts) unless permission is granted. Every care has been taken to ensure the accuracy of the information but no liability can be accepted for any errors or omissions. The right is reserved to make design modifications.

Patents

Essential parts of the FlexLink product range are protected by patents and design regulations.

1. How to read the catalogue: Open the catalogue and from the Table of content or the PDF navigation bar locate the group in which the part you want to find is present. Turn over to the concerned page number by a "click". Now find out the figure of the part you wish to order. Jot down the part number against that particular figure number from the text. In case, if you have the part number and you need the other details, the part index can be used. The part index (at the end of the catalogue) will give you the figure and page number of the part you wish to order.

2. How to order spare parts: The part number and the description of the part required should be invariably mentioned in the order as per the catalogue text. The latest part number as conveyed through our service circulars should only appear on the order. In case of ordering colored components, colour code of the components should be mentioned. The quantity shown against the part number is the quantity per unit for that group so that particular quantity should be multiplied by the number of sets required.

4. Abbreviations: The following abbreviations are used in this catalogue:

4. Recommended Spare parts:

Several items of the complete spare parts overview are earmarked as recommended spare parts. FlexLink advises its customers to purchase and stock these specific items for replacement in case of failure of the original item. The recommended spares are limited to only these items for which the cost of buying is in a fair relationship to the risk (i.e. probability * impact) of sudden failure. It merely consists of wear parts and some electrical and pneumatic components.

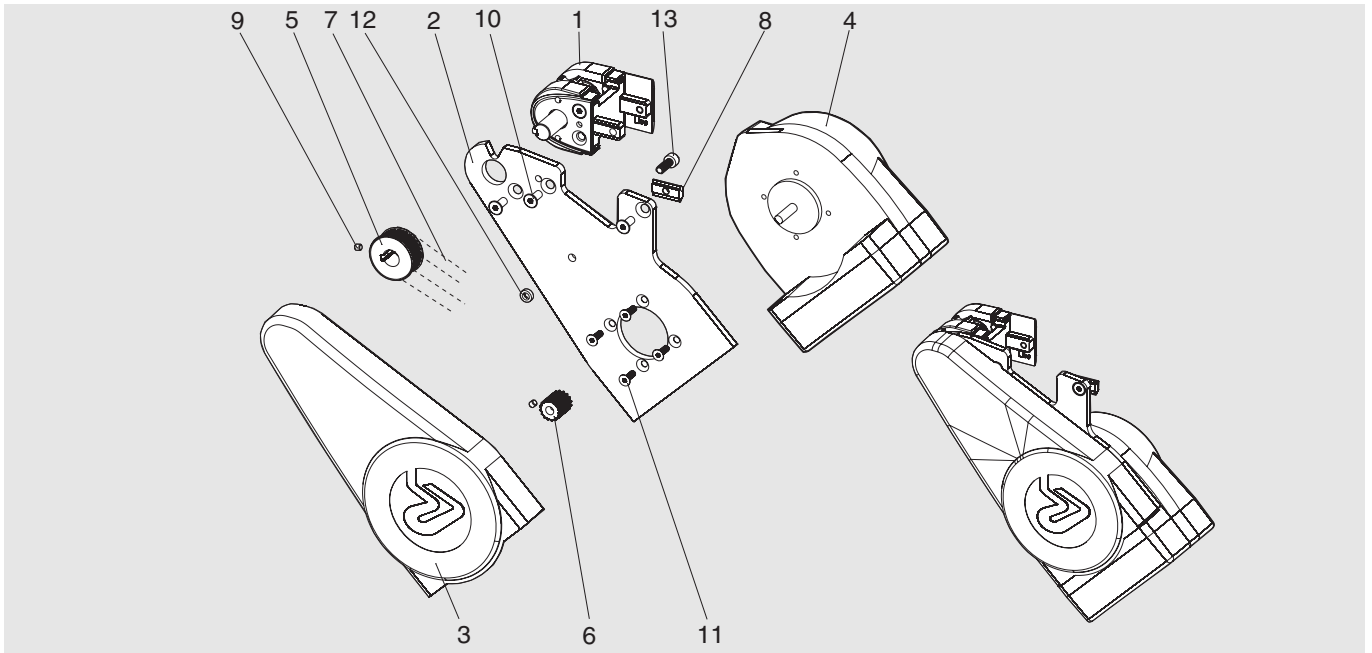
assly.	Assembly
V	Volts
N.I.	Not illustrated
W	Watt
Comp.	Complete
Fr	Front
Std.	Standard
L	Length
A/t.	Alternate
Rr	Rear
L.H.	Left hand
R.H.	Right hand
AR	As required
<i>(Part number)</i> Part number presented in "parentheses" and in Italic character style	Parts are included in a Spare parts kit.
*)	These items can only be purchased as part of a kit and when an item has an * the corresponding item always is placed between brackets (..) see above.
Recommended Spare part	Parts which are usually kept in stock and have short turnaround (See item 4)

Spare parts

5501EN-9

End drive unit (24V)

Complete unit XUEB L B / XUEB R B and XUEB L / XUEB R

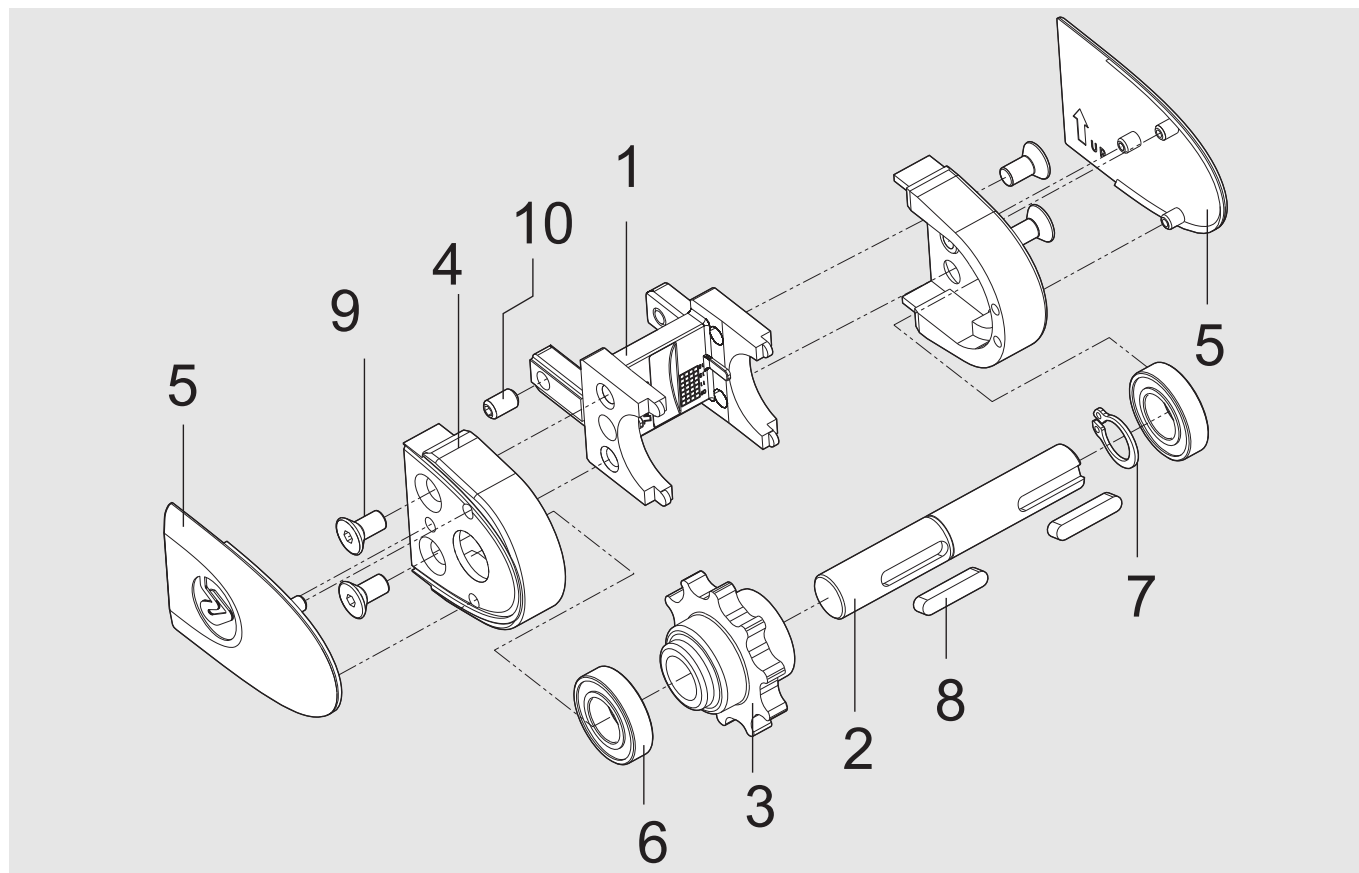


Item	Description	Part No	Qty	Comments	Recommended Spare parts
1	Basic unit	5113189	1		
2	Motor bracket	5112462	1		
3	Transmission cover	5113184	1	Left	
3	Transmission cover	5113198	1	Right	
4	Motor ¹⁾ Motor ²⁾	FLX1000089 ¹⁾ 5113190 ²⁾	1	24 V, check designation number to select the correct motor.	X
5,6	Timing belt pulley, kit	5113186	1	(5112392 + 5112558)	X
7	Timing belt	5113183	1	PGGT-3MR-360-9	X
8	Slot nut M5	XFAN 5	1		
9	Slotted set screw	ISO 4029	2	M4x4-A2K	
10	Hexagon socket c-sunk screw	ISO 10642	3	M5x12-10.9-A2K	
11	Hexagon socket c-sunk screw	ISO 10642	4	M4x12-10.9-A2K	
12	Retaining washer	(5112726)	1		
13	Hexagon socket head cap screw	ISO 4762	1	M5x14-8.8-A2K	

1) Valid for the generation of units with designation numbers ending with B. See top of page.

2) Valid for the generation of units with designation numbers **not** ending with B. See top of page.

Basic unit 5113189

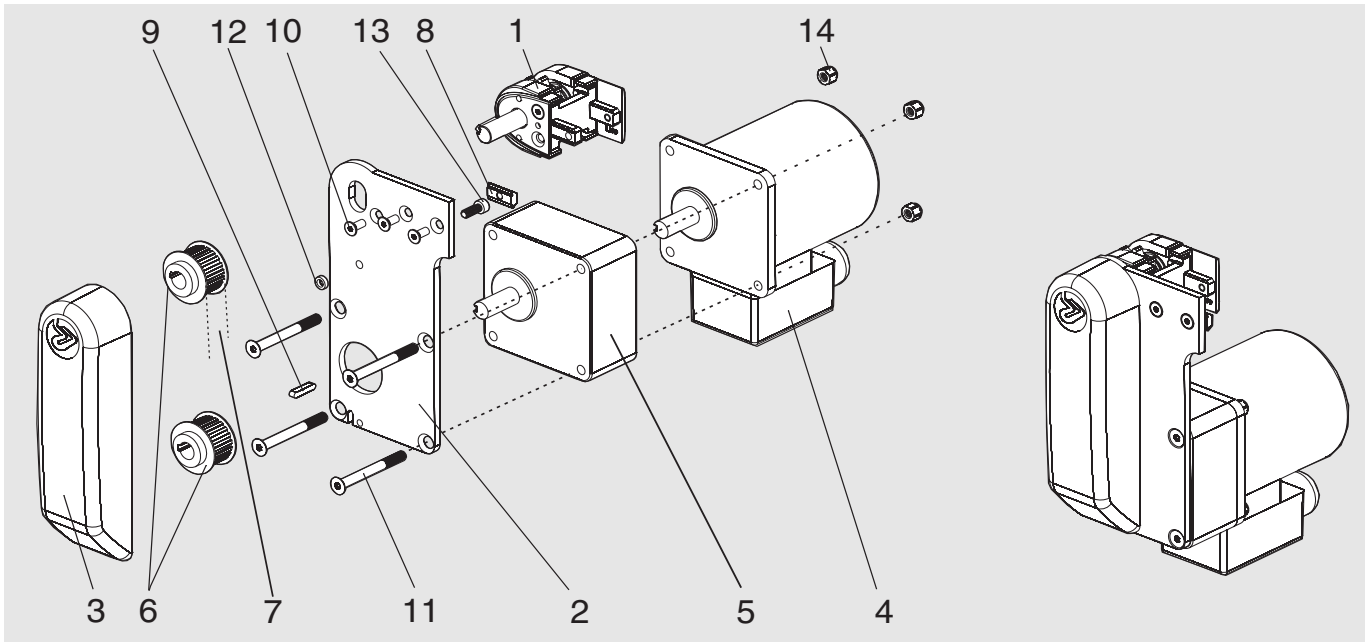


Item	Description	Part No	Qty	Comments	Recommended Spare parts
1	Frame	5112527	1		
2	Shaft	5112723	1		
3	Drive wheel	5055848	1		
4	Guide	5112193	2		
5	Cover R	5112536	1	for XUEB R B	
5	Cover L	5112552	1	for XUEB L B	
6	Ball bearing	61901-2RS1	2		
7	Retaining ring	DIN 471	1	12 St	
8	Parallel key	ISO/ R 773	2	4x4x20	
9	Hexagon socket c-sunk screw	ISO 10642	4	M5x10-10.9-A2K	
10	Slotted set screw	ISO 4029	2	M5x8-A2K	

Spare parts

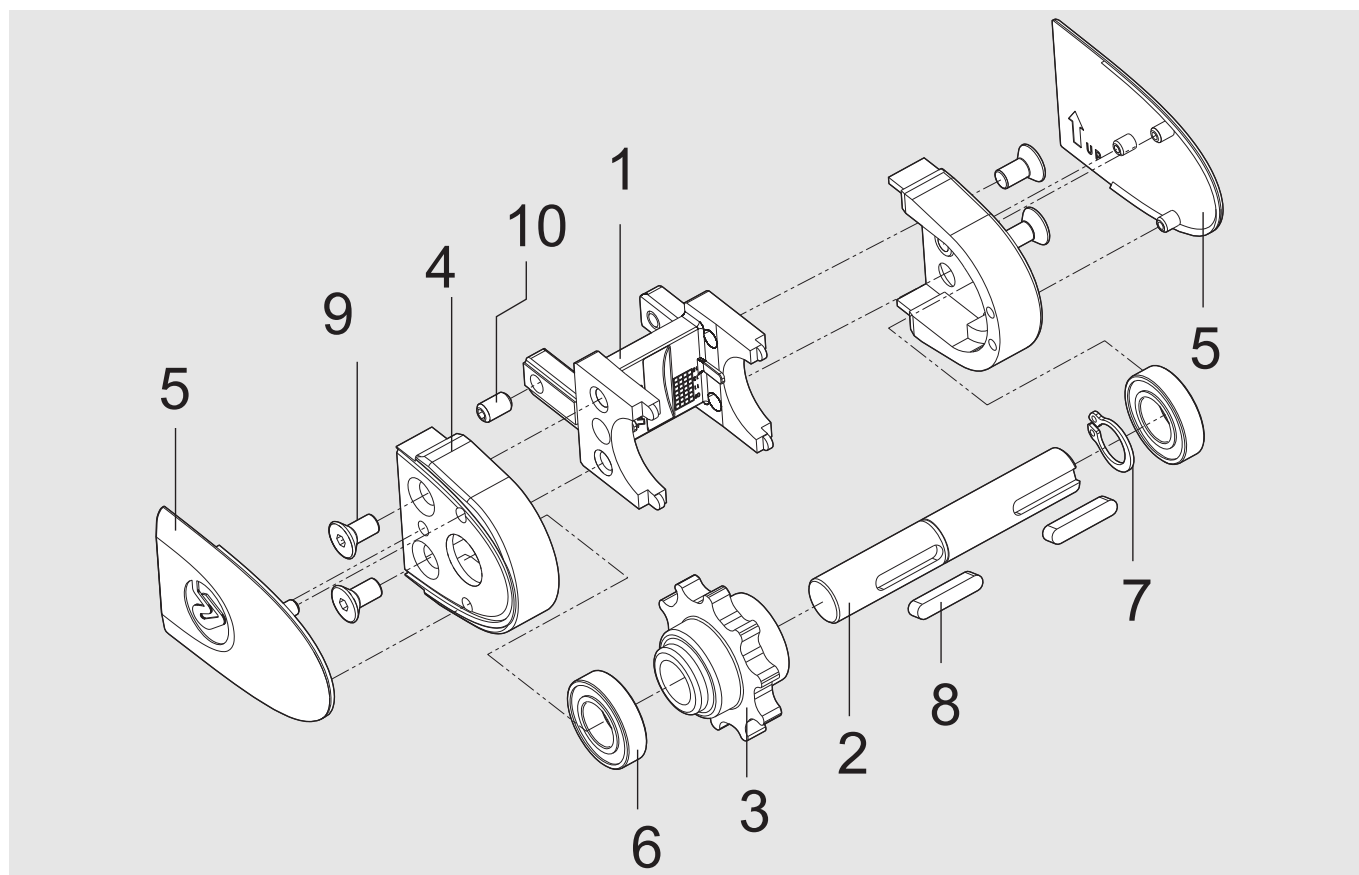
End drive unit (380V- 440V)

Complete unit XUEB ML_ / XUEB MR_
 0-unit XUEB ML0 / XUEB MR0



Item	Description	Part No	Qty	Comments	Recommended Spare parts
1	Basic unit	XUEB 0 U	1		
2	Motor bracket	5112738	1		
3	Transmission cover	5113185	1		
4	Motor*	5113191	1	40 W SPG	X
5	Gearbox*	5113194	1	S9KB12,5BH, 40W, 120rpm (ML3/MR3)	X
5	Gearbox*	5113193	1	S9KB20BH, 40W, 75rpm (ML2/MR2)	X
5	Gearbox*	5113192	1	S9KB40BH, 40W, 37rpm (ML1/MR1)	X
5	Gearbox*	5113195	1	S9KB10BH, 40W, 150rpm (ML4/MR4)	X
6	Timing belt pulley	5111745	2	20-5MR-15 (Dia 12)	X
7	Timing belt	5113182	1	PGGT-5MR-350-15	X
8	Slot nut M5	XFAN 5	1		
9	Parallel key	ISO/R 773	1	4x4x20	
10	Hexagon socket c-sunk screw	ISO 10642	3	M5x12-10.9-A2K	
11	Hexagon socket c-sunk screw	ISO 10642	4	M6x80-10.9-A2K	
12	Retaining washer	(5112726)	1		
13	Hexagon socket head cap screw	ISO 4762	1	M5x14-8.8-A2K	
14	Prev. torque type hexagon nut	ISO 7040	4	M6-A2K	
*) 4, 5, 9				Not included in 0-unit	

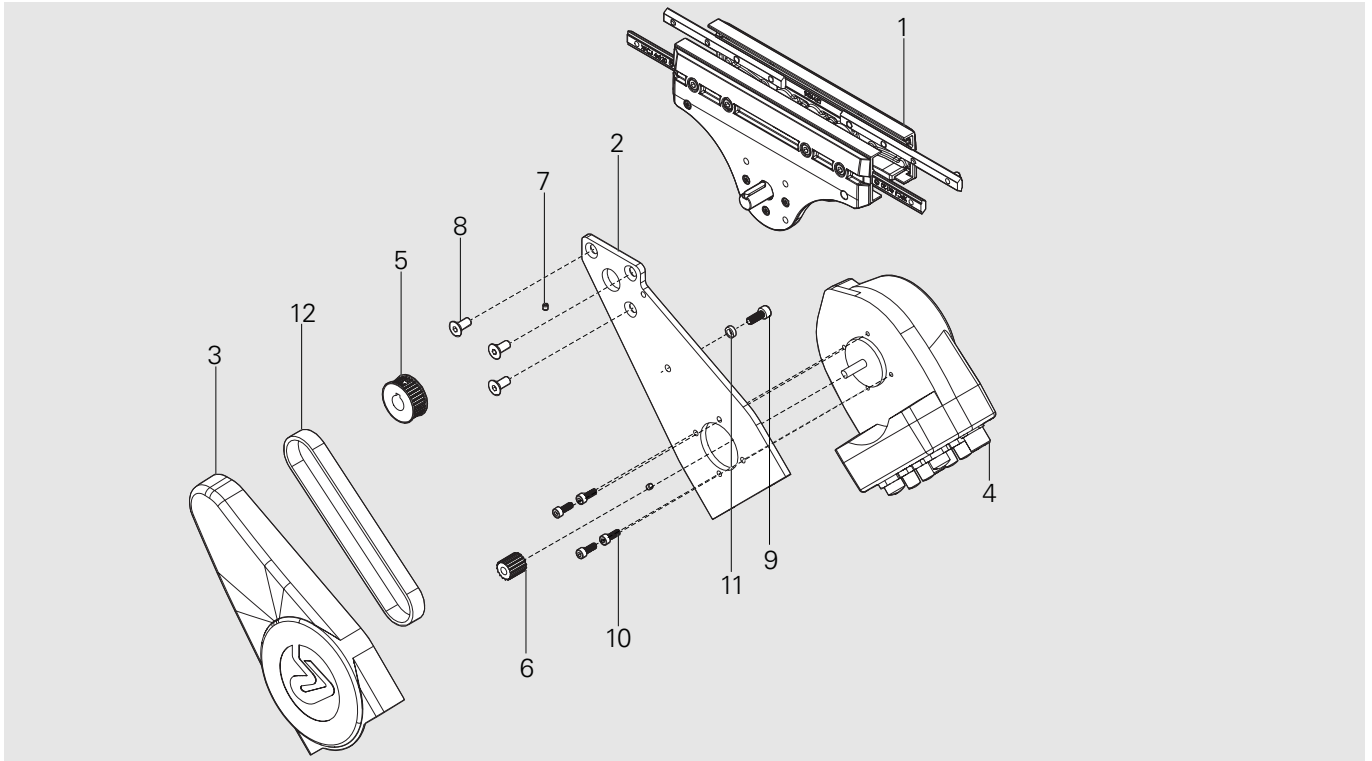
Basic unit XUEB 0 U



Item	Description	Part No	Qty	Comments	Recommended Spare parts
1	Frame	5112527	1		
2	Shaft	5112724	1		
3	Drive wheel	5055848	1		
4	Guide	5112193	2		
5	Cover R	5112536	1	for XUEB MR_	
5	Cover L	5112552	1	for XUEB ML_	
6	Ball bearing	61901-2RS1	2		
7	Retaining ring	DIN 471	1	12St	
8	Parallel key	ISO/ R 773	2	4x4x20	
9	Hexagon socket c-sunk screw	ISO 10642	4	M5x10-10.9-A2K	
10	Slotted set screw	ISO 4029	2	M5x8-A2K	

Intermediate drive unit (24V)

Complete unit XUER L B / XUER R B and XUER L / XUER R



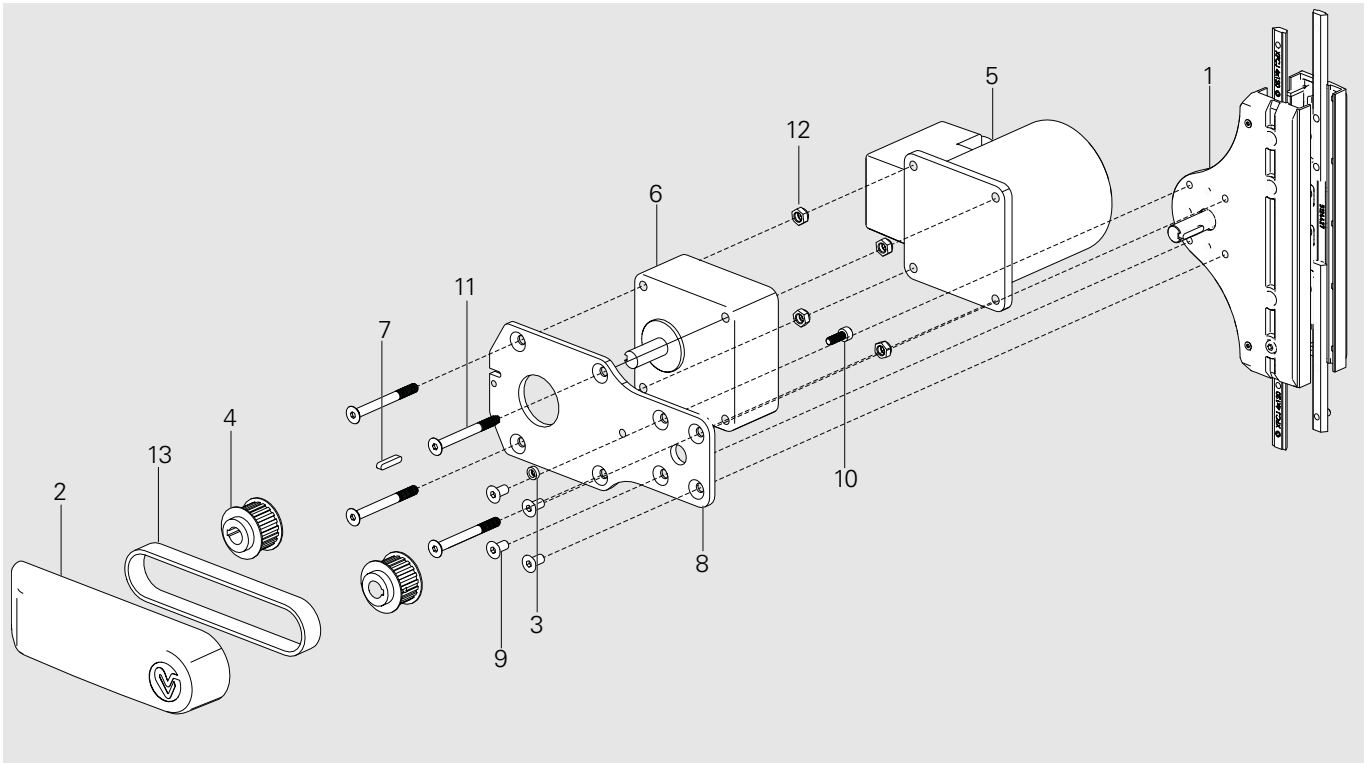
Item	Description	Part No	Qty	Comments	Recommended Spare parts
1	Basic unit	5125160	1		
2	Motor bracket	5125155	1		
3	Transmission cover	5113184	1	Motor on left side.	
3	Transmission cover	5113198	1	Motor on right side (not shown).	
4	Motor ¹⁾	FLX1000089 ¹⁾	1	Check designation number to select the correct motor	X
	Motor ²⁾	5113190 ²⁾			
5, 6	Timing belt pulley, kit	5113186	1		X
7	Slotted set screw	ISO 4029	2	M4x4-A2K	
8	Hexagon socket c-sunk screw	ISO 10642	3	M6x12-10.9-A2K	
9	Hexagon socket head cap screw	ISO 4762	1	M5x14-8.8-A2K	
10	Hexagon socket head cap screw	ISO 4762	4	M4x12-8.8-A2K	
11	Retaining washer	(5112726)	1		
12	Timing belt	5113183	1		X

1) Valid for the generation of units with designation numbers ending with B. See top of page.

2) Valid for the generation of units with designation numbers **not** ending with B. See top of page.

Intermediate drive unit (380V- 440V)

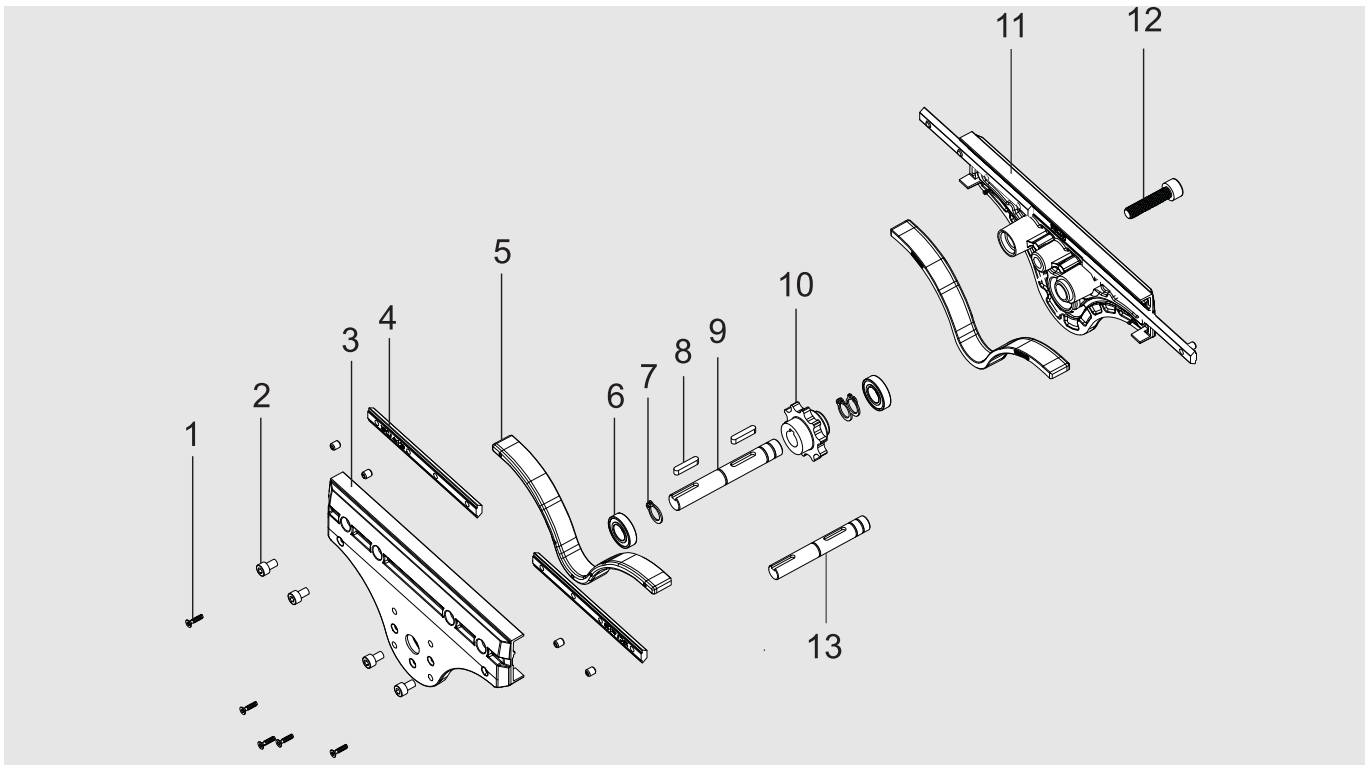
Complete unit XUER M_A
0-unit XUER M0 A



Item	Description	Part No	Qty	Comments	Recommended Spare parts
1	Basic unit	XUER 0 U A	1		
2	Transmission cover	5113185	1		
3	Retaining washer	(5112726)	1		
4	Timing belt pulley	5111745	2	in complete unit XUER M_A	X
			1	in 0-unit XUER M0 A	
5*	Motor	5113191	1		X
6*	Gearbox	5113192	1	S9KB40BH, 40 W, 37 rpm, (ML1/MR1)	X
6*	Gearbox	5113193	1	S9KB20BH, 40 W, 75 rpm (ML2/MR2)	X
6*	Gearbox	5113194	1	S9KB12, 5BH, 40 W, 120 rpm, (ML3/MR3)	X
6*	Gearbox	5113195	1	S9KB10BH, 40 W, 150 rpm, (ML4/MR4)	X
7*	Parallel key	ISI/ R 773	1	4x4x20	
8	Motor bracket	5125116	1		
9	Hexagon socket c-sunk screw	ISO 10642	4	M6x12-10.9-A2K	
10	Hexagon socket head cap screw	ISO 4762	1	M5x14-8.8-A2K	
11	Hexagon socket c-sunk screw	ISO 10642	4	M6x80-10.9-A2K	
12	Prev. torque type hexagon nut	Din 985:1987	4	M6-A2K	
13	Timing belt	5113182	1	PGGT-5MR-350-15	X
*) 5, 6, 7				Not included in 0-unit	

Basic unit

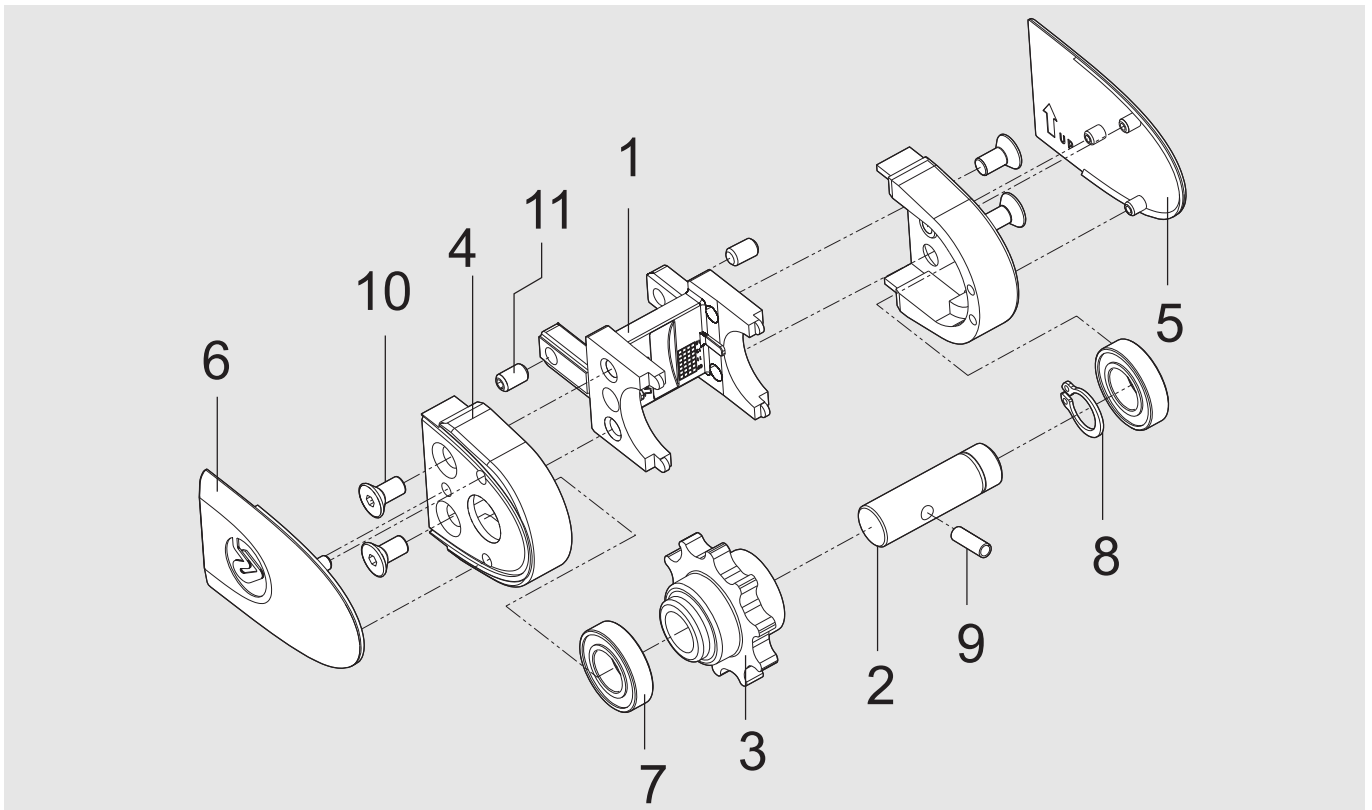
XUER 0 U A (380 - 440V)
5125160 (24V)



Item	Description	Part No	Qty	Comments	Recommended Spare parts
1	Screw	5125008	10	See kit below (5129522)	
2	Hexagon socket head cap screw	ISO 4762	8	M5x8 8,8 A2K	
3	Side plate	5124425	1		
4	Connecting strip	XFCJ 4x120	1	Incl. slotted head screws	
5	Slide rail	5124706	2	See kit below (5129522)	
6	Ball bearing	61901-2RS	2		
7	Retaining ring	DIN 471	3	12 ST FZB	
8	Parallel key	ISO/ R 773	2	4x4x20	
9	Drive shaft	5125009	1	For 400V motor, XUER 0 U A	
(6,7,8,9,10)	Drive shaft kit for 400 V motor	5129524	1	Kit for 400V motor XUER 0 U A	X
10	Drive wheel	5055848	1		
11	Side plate	5124427	1		
12	Hexagon socket head cap screw	ISO 4762	1	M8x35 8.8 A2K	
13	Drive shaft	5125159	1	For 24V motor 5125160	
(6,7,8,10,13)	Drive shaft kit for 24 V motor	5129577	1	Kit for 24V motor 5125160	X
1,5	Slide rail kit	5129522	1		X

Spare parts XUEJ 50

Idler end unit XUEJ 50



Item	Description	Part No	Qty	Comments	Recommended Spare parts
1	Frame	5112527	1		
2	Shaft	5054659	1		
3*	Drive wheel	(5054657)	1		
4	Guide	5112193	2		
5	Cover R	5112536	1		
6	Cover L	5112552	1		
7	Ball bearing	61901-2RS1	2		
8	Retaining ring	DIN 471	1	12St	
9	Spring-type straight pin	ISO 8750	1	4x12 St	
10	Hexagon socket c-sunk screw	ISO 10642	4	M5x10-10.9-A2K	
11	Slotted set screw	ISO 4029	2	M5x8-A2K	
*)3	Drive wheel kit	5055848	1		

Spare parts, Functions X45e

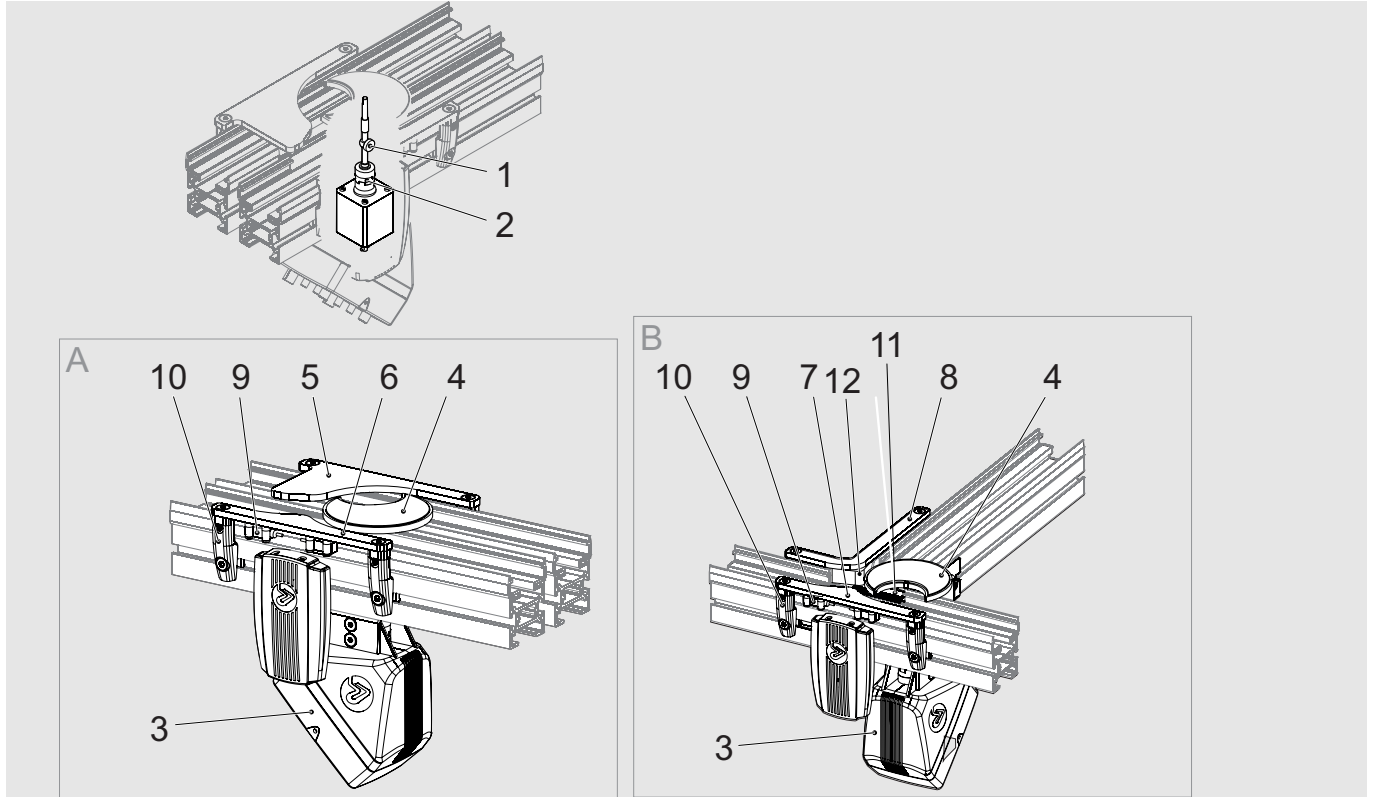
Diverters

A Parallel

XUPJ 43 D_ B, XUPJ 43 D_HB, XTPJ 43 D_ B
 XUPJ 43 D_ , XUPJ 43 D_H, XTPJ 43 D_

B 90 degrees

XUPJ 43 D_ 90 B, XUPJ 43 D_ 90HB
 XUPJ 43 D_ 90, XUPJ 43 D_ 90 H



Item	Description	Part No	Qty	Comments	Recommended Spare parts
1	Bearing kit	5113206	1		X
2	Coupling	5113204	1		X
3	Motor ¹⁾	FLX1000090 ¹⁾	1	Check designation no of your unit to select the correct motor.	
	Motor ²⁾	5113205 ²⁾	1		
4	Guide disc	5112995	1	Incl. shaft	
5	Guide rail	5113208	1	XUUT DL	
	Guide rail	5113208	1	XUUT DR	
6	Guide rail	5113214	1	XUUT DL	
	Guide rail	5113207	1	XUUT DR	
7	Guide rail	5113214	1	XUUT 90 DL	
	Guide rail	5113207	1	XUUT 90 DR	
8	Guide rail	5113211	1	XUUT 90 DL	
	Guide rail	5113211	1	XUUT 90 DR	
9	Sensor	1081184WTB2S-2P3160S29	1	SICK, 50 mm (Reading distance)	X
10	Guide rail bracket kit	5113219	1		
11	Slide plate	5113220	1		
12	Slide block	5122804	1		

1) Valid for the generation of units with designation numbers ending with B. See top of page.

2) Valid for the generation of units with designation numbers **not** ending with B. See top of page.

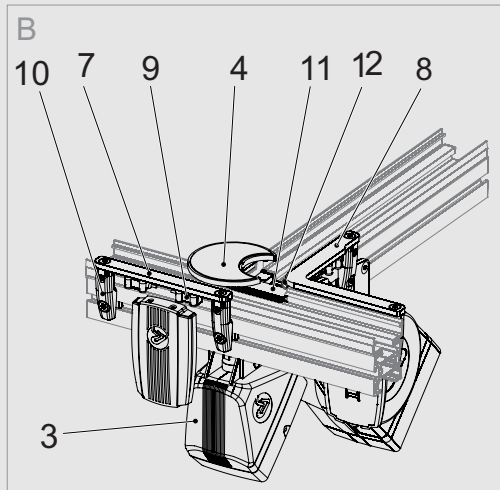
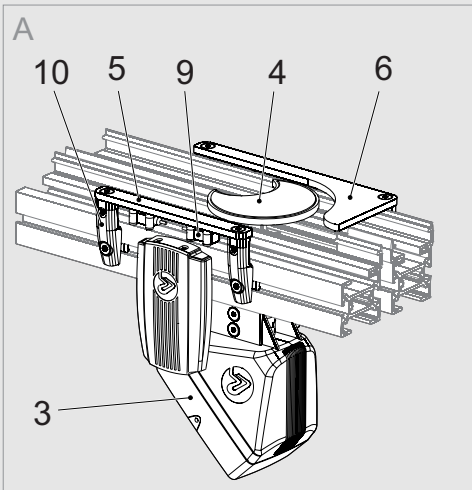
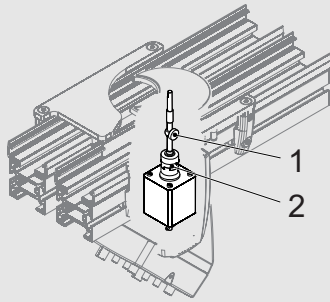
Mergers

A Parallel

XUPJ 43 M_ B, XUPJ 43 M_H B, XTPJ 43 M_ B
XUPJ 43 M_, XUPJ 43 M_H, XTPJ 43 M_

B 90 degrees

XUPJ 43 M_ 90 B, XUPJ 43 M_ 90 HB
XUPJ 43 M_ 90, XUPJ 43 M_ 90 H



Item	Description	Part No	Qty	Comments	Recommended Spare parts
1	Bearing kit	5113206	1		X
2	Coupling	5113204	1		X
3	Motor ¹⁾	FLX1000090 ¹⁾	1	Check designation no of your unit to select the correct motor.	
	Motor ²⁾	5113205 ²⁾	1		
4	Guide disc	5112995	1	Incl. Shaft	
5	Guide rail	5113209	1	XUUT ML	
	Guide rail	5113209	1	XUUT MR	
6	Guide rail	5113210	1	XUUT ML	
	Guide rail	5113215	1	XUUT MR	
7	Guide rail	5113209	1	XUUT 90 ML	
	Guide rail	5113209	1	XUUT 90 MR	
8	Guide rail	5113212	1	XUUT 90 ML	
	Guide rail	5113216	1	XUUT 90 MR	
9	Sensor	1081216GTB2S-P5331S06	1	30 mm (Reading distance)	X
10	Guide rail bracket kit	5113219	1		
11	Slide plate	5113220	1		
12	Slide block	5122804	1		

1) Valid for the generation of units with designation numbers ending with B. See top of page.

2) Valid for the generation of units with designation numbers **not** ending with B. See top of page.

Combined Diverter/Merger

A 90 degrees

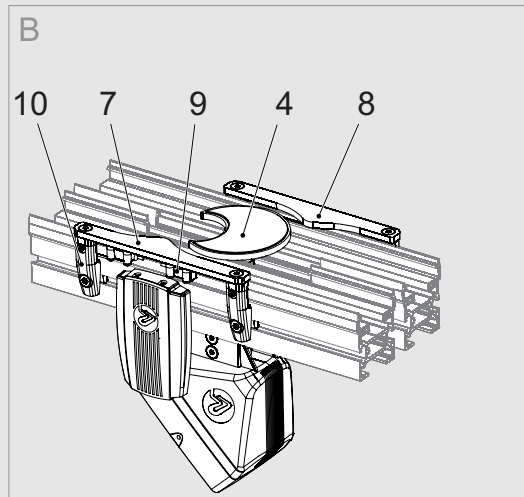
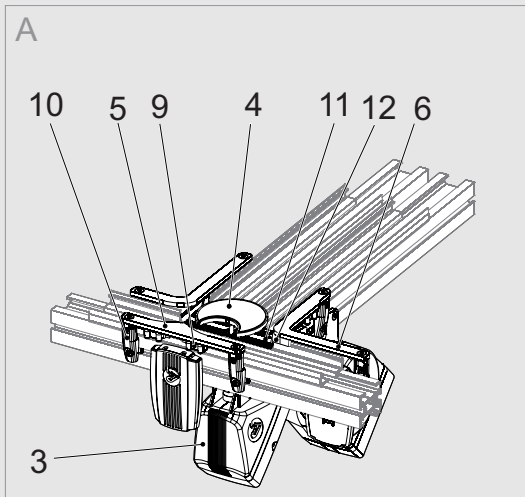
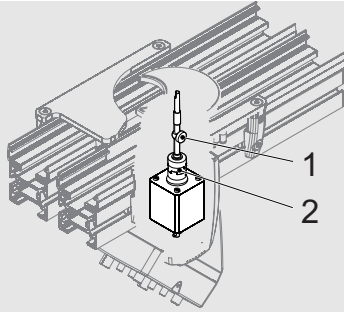
XUPJ 43 C_ 90 B, XUPJ 43 C_ 90 HB

XUPJ 43 C_ 90, XUPJ 43 C_ 90 H

B Parallel

XUPJ 43 C_ B, XUPJ 43 C_ H B, XTPJ 43 C_ B

XUPJ 43 C_ , XUPJ 43 C_ H, XTPJ 43 C_



Item	Description	Part No	Qty	Comments	Recommended Spare parts
1	Bearing kit	5113206	1		X
2	Coupling	5113204	1		X
3	Motor ¹⁾	FLX1000090 ¹⁾	1	Check designation no of your unit to select the correct motor.	
	Motor ²⁾	5113205 ²⁾	1		
4	Guide disc	5112995	1	Incl. Shaft	
5	Guide rail	5113214	1	XUUT 90 CL	
	Guide rail	5113207	1	XUUT 90 CR	
6	Guide rail	5113212	1	XUUT 90 CL	
	Guide rail	5113216	1	XUUT 90 CR	
7	Guide rail	5113214	1	XUUT 180 CL	
	Guide rail	5113207	1	XUUT 180 CR	
8	Guide rail	5113214	1	XUUT 180 CL	
	Guide rail	5113207	1	XUUT 180 CR	
9	Sensor	1081184WTB2S-2P3160S29	1	SICK, 50 mm (Reading distance)	X
10	Guide rail bracket kit	5113219	1		
11	Slide plate	5113220	1		
12	Slide block	5122804	1		

1) Valid for the generation of units with designation numbers ending with B. See top of page.

2) Valid for the generation of units with designation numbers **not** ending with B. See top of page.

Transfer

A parallel

XUPJ 43 T, XUPJ 43 TH, XTPJ 43 T

B 90 degrees

XUPJ 43 T_ 90 B, XUPJ 43 T_ 90HB

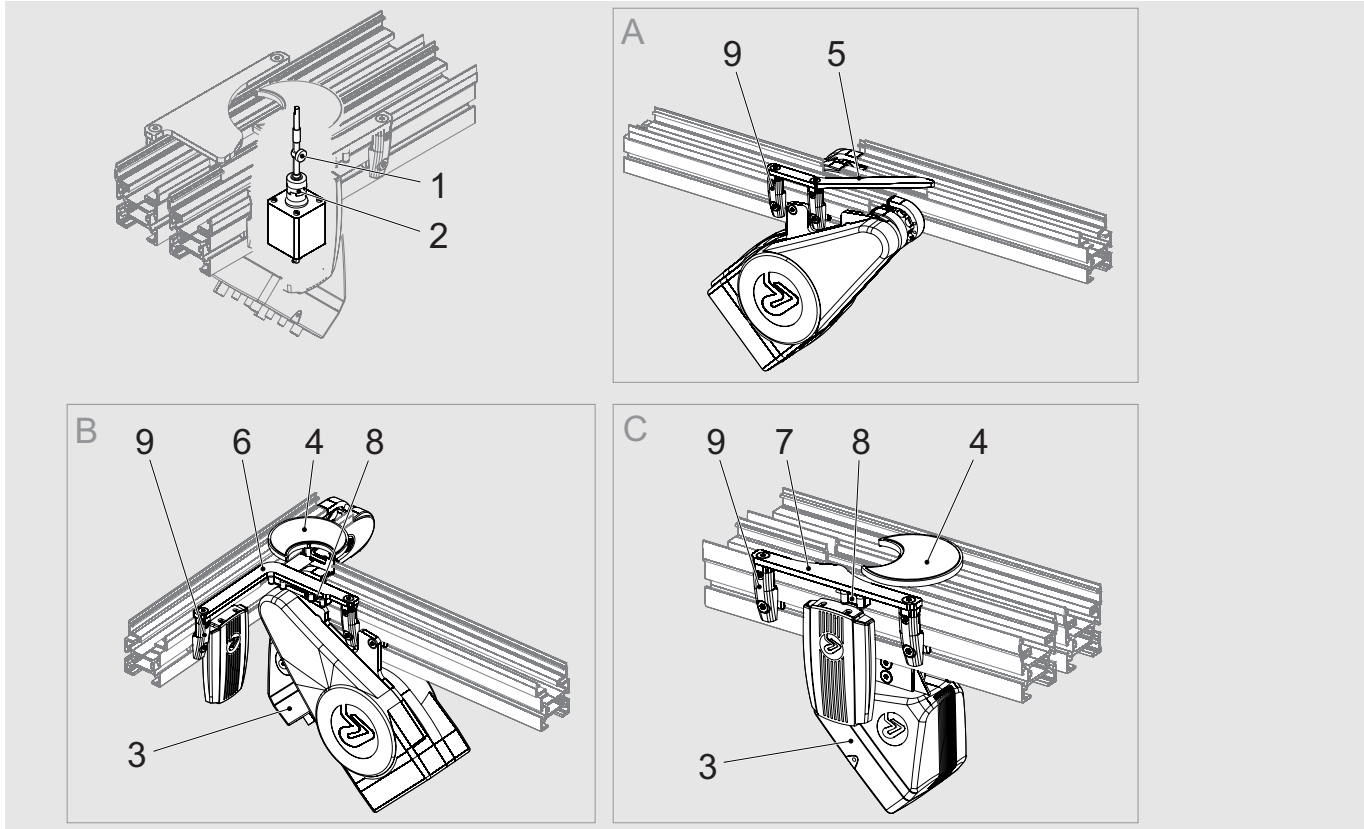
XUPJ 43 T_ 90, XUPJ 43 T_ 90 H

C 180 degrees

XUPJ 43 T_ 180B, XUPJ 43 T_ 180HB,
XTPJ 43 T_ 180UB, XTPJ 43 T_ 180B

XUPJ 43 T_ 180, XUPJ 43 T_ 180 H

XTPJ 43 T_ 180U, XTPJ 43 T_ 180



Item	Description	Part No	Qty	Comments	Recommended Spare parts
1	Bearing kit	5113206	1		X
2	Coupling	5113204	1		X
3	Motor ¹⁾	FLX1000090 ¹⁾	1	Check designation no of your unit to select the correct motor.	
	Motor ²⁾	5113205 ²⁾	1		
4	Guide disc	5112995	1	Incl. shaft	
5	Guide rail	5113213	1	XUUT PL	
	Guide rail	5113213	1	XUUT PR	
6	Guide rail	5113212	1	XUUT 90 L	
	Guide rail	5113216	1	XUUT 90 R	
7	Guide rail	5113214	1	XUUT 180 L	
	Guide rail	5113207	1	XUUT 180 R	
8	Sensor	1081216GTB2S-P5331S06	1	SICK, 30 mm (Reading distance), XUUT 90 L/R	X
	Sensor	1081184WTB2S-2P3160S29	1	SICK, 50 mm (Reading distance), XUUT 180 L/R	X
9	Guide rail bracket kit	5113219	1		

1) Valid for the generation of units with designation numbers ending with B. See top of page.

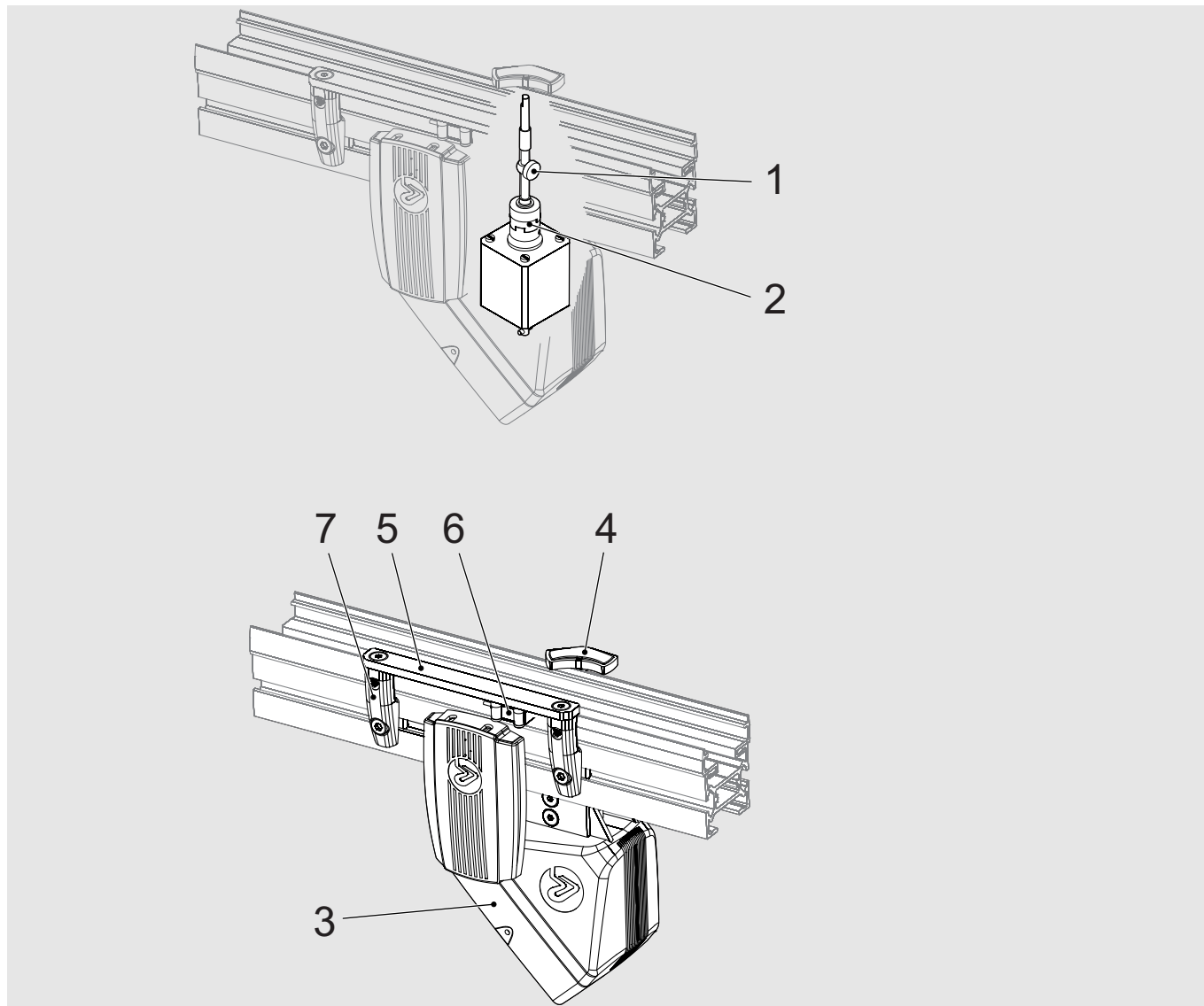
2) Valid for the generation of units with designation numbers **not** ending with B. See top of page.

<http://www.flexlink.com>

Stop

XUPD 43_ B, XTPD 43_ B

XUPD 43_, XTPD 43_



Item	Description	Part No	Qty	Comments	Recommended Spare parts
1	Bearing kit	5113206	1		X
2	Coupling	5113204	1		X
3	Motor ¹⁾	FLX1000090 ¹⁾	1	Check designation no of your unit to select the correct motor.	
	Motor ²⁾	5113205 ²⁾	1		
4	Stop dog	5112996	1	Incl. Shaft	
5	Guide rail	5113209	1	XUUS 11 L	
	Guide rail	5113209	1	XUUS 11 R	
6	Sensor	1081216GTB2S-P5331S06	1	SICK, 30 mm (Reading distance)	X
7	Guide rail bracket kit	5113219	1		

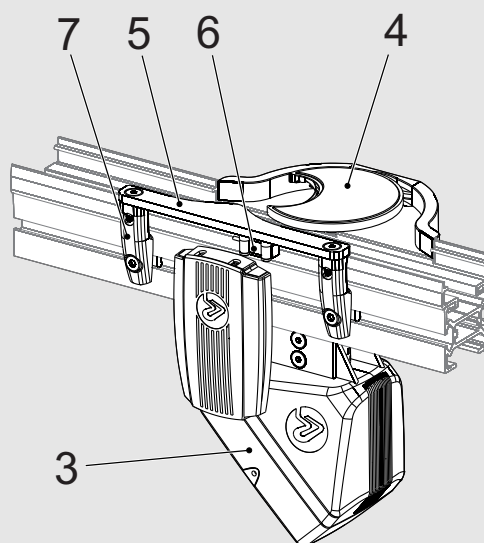
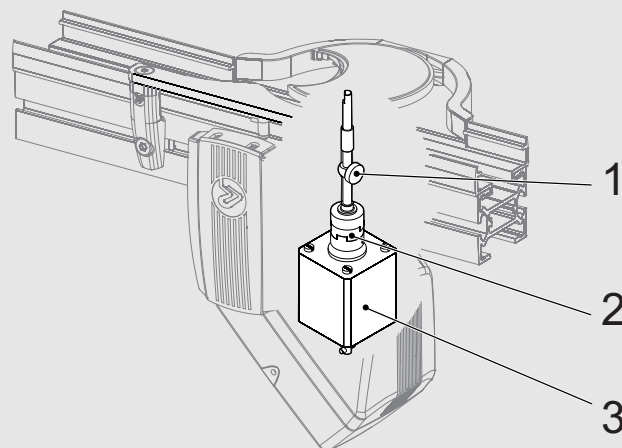
1) Valid for the generation of units with designation numbers ending with B. See top of page.

2) Valid for the generation of units with designation numbers **not** ending with B. See top of page.

Locating Station

XUPX 43 O_ B, XTPX 43 O_ B

XUPX 43 O_ , XTPX 43 O_



Item	Description	Part No	Qty	Comments	Recommended Spare parts
1	Bearing kit	5113206	1		X
2	Coupling	5113204	1		X
3	Motor ¹⁾	FLX1000090 ¹⁾	1	Check designation no of your unit to select the correct motor.	
	Motor ²⁾	5113205 ²⁾	1		
4	Guide disc	5113125	1	Incl. Shaft	
5	Guide rail	5113214	1	XUUL 11 L	
	Guide rail	5113207	1	XUUL 11 R	
6	Sensor	1081184WTB2S-2P3160S29	1	SICK, 50 mm (Reading distance)	X
7	Guide rail bracket kit	5113219	1		

1) Valid for the generation of units with designation numbers ending with B. See top of page.

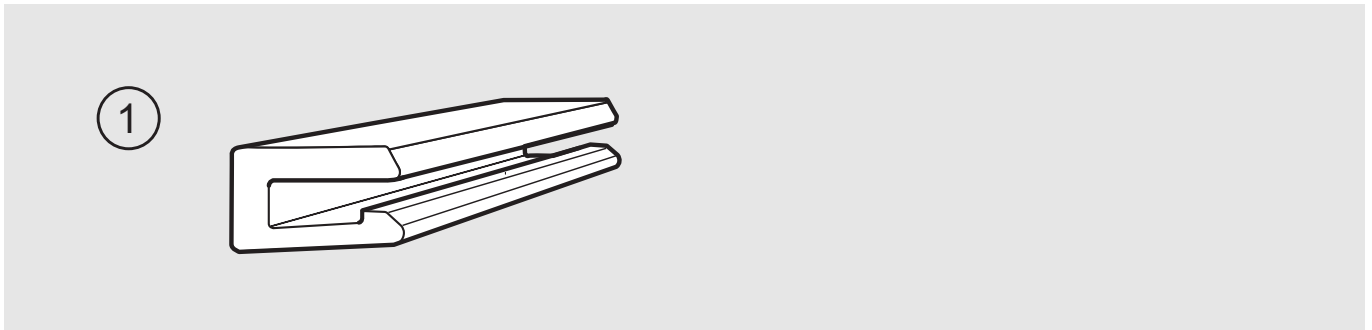
2) Valid for the generation of units with designation numbers **not** ending with B. See top of page.

Slide rail- X45

5561EN-2

Spare parts Slide rail- X45

Slide rail – X45



Item	Description	Part No	Qty	Comments	Recommended Spare parts
1	Slide rail for non puck-application or return side				
	PA-PE (Standard) (Grey)	XTCR 25 H			
	PE-UHMW (Conductive) (Black)	XTCR 25 E			

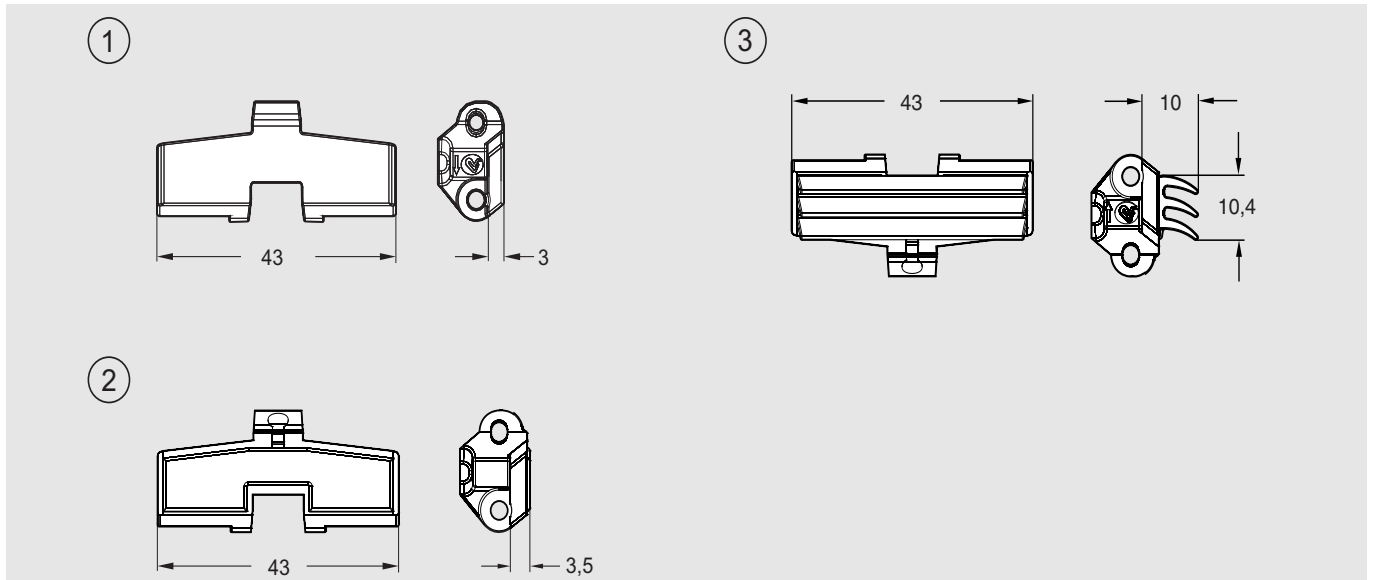
Chains- X45



a coesia company

5562EN-1

Spare parts Chains- X45



Item	Description	Part No	Qty	Comments	Recommended Spare parts
1	Plain chain				
	Standard material	XUTP 3A45			
	Conductive material	XUTP 3A45 E			
	Plain link kit				
	Standard material	5113047		Link kit contains 10 links, 10 pivots, 10 steel pins	
	Conductive material	5113048		Link kit contains 10 links, 10 pivots, 10 steel pins	
2	Friction top chain				
	Standard material	XUTP 3A45 F			
	Conductive material	XUTP 3A45 EF			
	Friction top link kit				
	Standard material	5113492		Link kit contains 10 links, 10 pivots, 10 steel pins	
	Conductive material	5113493		Link kit contains 10 links, 10 pivots, 10 steel pins	
3	Flexible cleat chain	XUTE 3A45 C			
	Flexible cleat link kit	5113494			

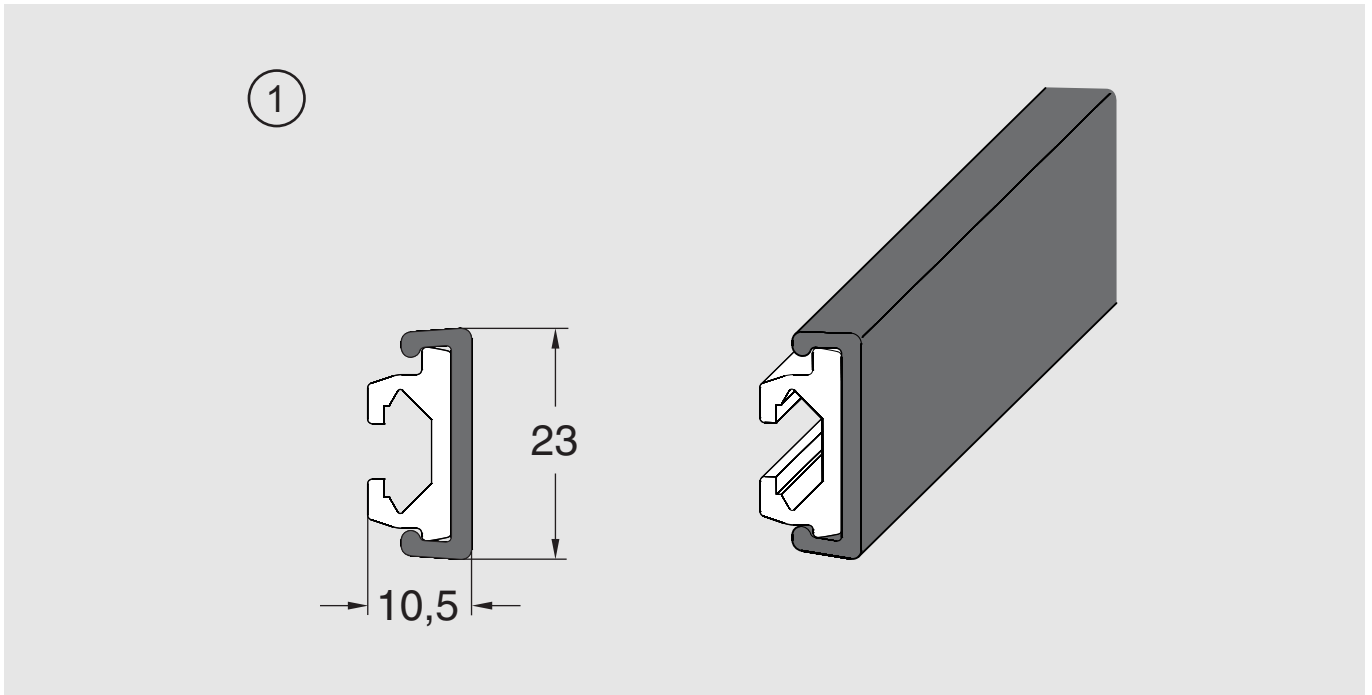
Spare parts Guide rail cover- X45



a coesia company

5563EN-2

Spare parts Guide rail cover- X45



Item	Description	Part No	Qty	Comments	Recommended Spare parts
1	Guide rail cover				
	Polyethylene, length 3 m	XLRT 3x23			
	PE-UHMW, (Conductive) length 3 m	XLRT 3x23 E			

