



**SYSTEM WL**

**Spare parts**



a coesia company

© Copyright FlexLink 2021

The contents of this publication are the copyright of the publishers and may not be reproduced (even extracts) unless permission is granted. Every care has been taken to ensure the accuracy of the information but no liability can be accepted for any errors or omissions. The right is reserved to make design modifications.

Patents

Essential parts of the FlexLink product range are protected by patents and design regulations.  
Drawings are made to European standards.

Table of Content

End drive units, direct drive, no slip WLEB ..... 1

End drive units, direct drive with slip WLEB..... 4

Idler end units ..... 7

Spare parts Slide rails - WL ..... 9

Spare parts Chains - WL ..... 11

## Catalogue instructions

**1. How to read the catalogue:** Open the catalogue and from the Table of content or the PDF navigation bar locate the group in which the part you want to find is present. Turn over to the concerned page number by a "click". Now find out the figure of the part you wish to order. Jot down the part number against that particular figure number from the text. In case, if you have the part number and you need the other details, the part index can be used. The part index (at the end of the catalogue) will give you the figure and page number of the part you wish to order.

**2. How to order spare parts:** The part number and the description of the part required should be invariably mentioned in the order as per the catalog text. The latest part number as conveyed through our service circulars should only appear on the order. In case of ordering colored components, color code of the components should be mentioned. The quantity shown against the part number is the quantity per unit for that group so that particular quantity should be multiplied by the number of sets required.

**3. Abbreviations:** The following abbreviations are used in this catalog:

assly.	Assembly
V	Volts
N.I.	Not illustrated
W	Watt
Comp.	Complete
Fr	Front
Std.	Standard
L	Length
A/t.	Alternate
Rr	Rear
L.H.	Left hand
R.H.	Right hand
AR	As required
<i>(Part number)</i> Part number presented in "parentheses" and in Italic character style	Parts are included in a Spare parts kit.
*)	These items can only be purchased as part of a kit and when an item has an * the corresponding item always is placed between brackets (..) see above.
Recommended Spare part	Parts which are usually kept in stock and have short turnaround (See item 4)

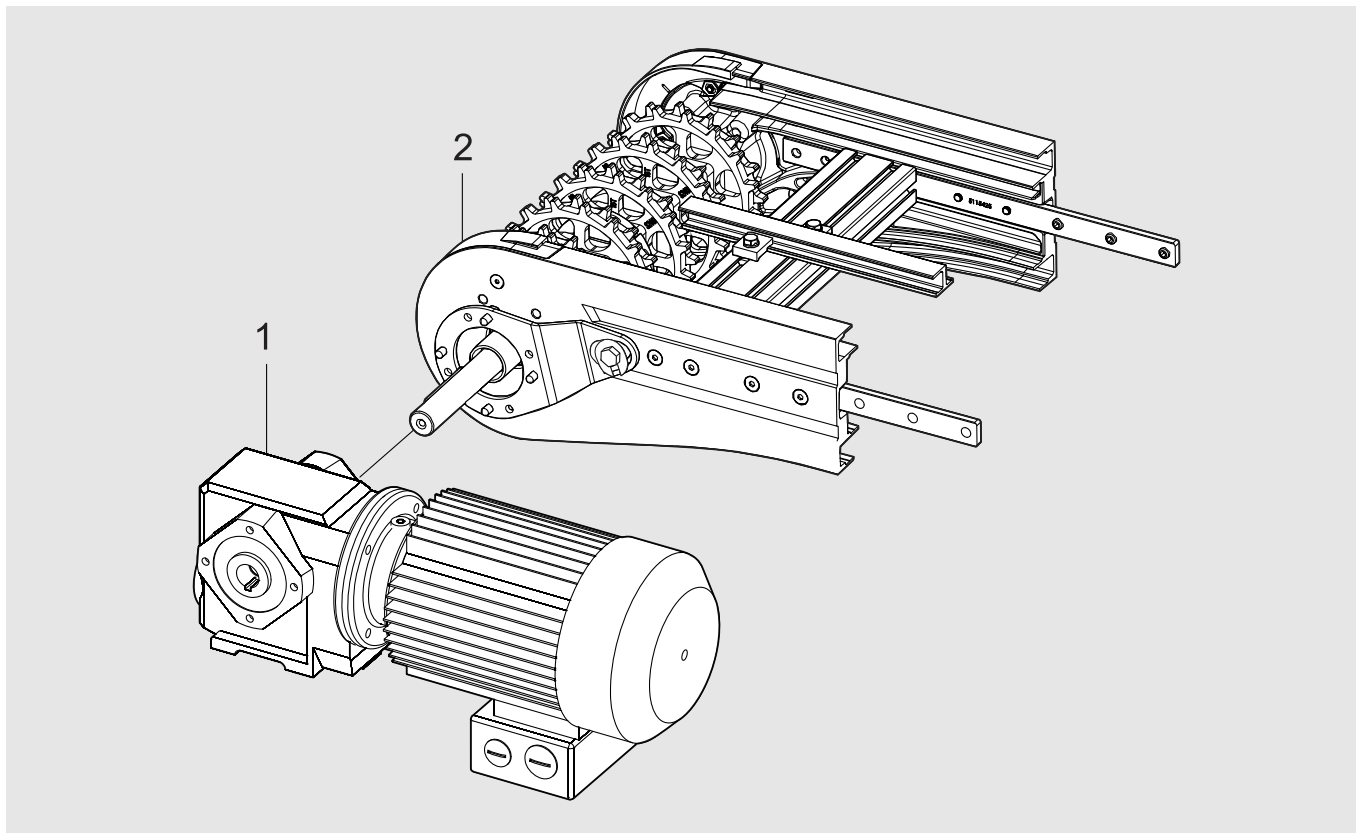
## 4. Recommended Spare parts:

Several items of the complete spare parts overview are earmarked as recommended spare parts. FlexLink advises its customers to purchase and stock these specific items for replacement in case of failure of the original item. The recommended spares are limited to only these items for which the cost of buying is in a fair relationship to the risk (i.e. probability \* impact) of sudden failure. It merely consists of wear parts and some electrical and pneumatic components.

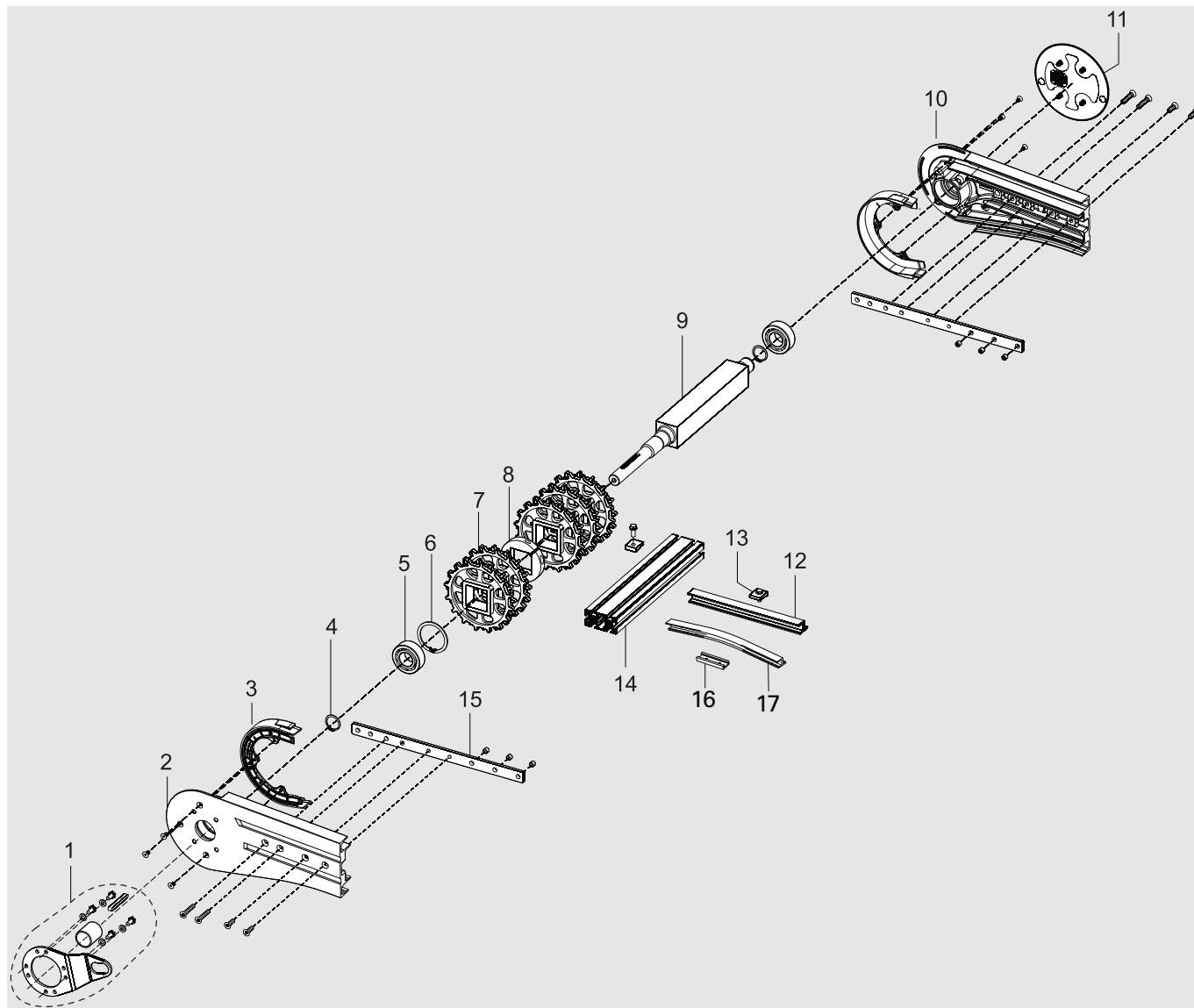
# Spare parts End drive unit - WL

Technical information from FlexLink

## End drive units, direct drive, no slip clutch WLEB



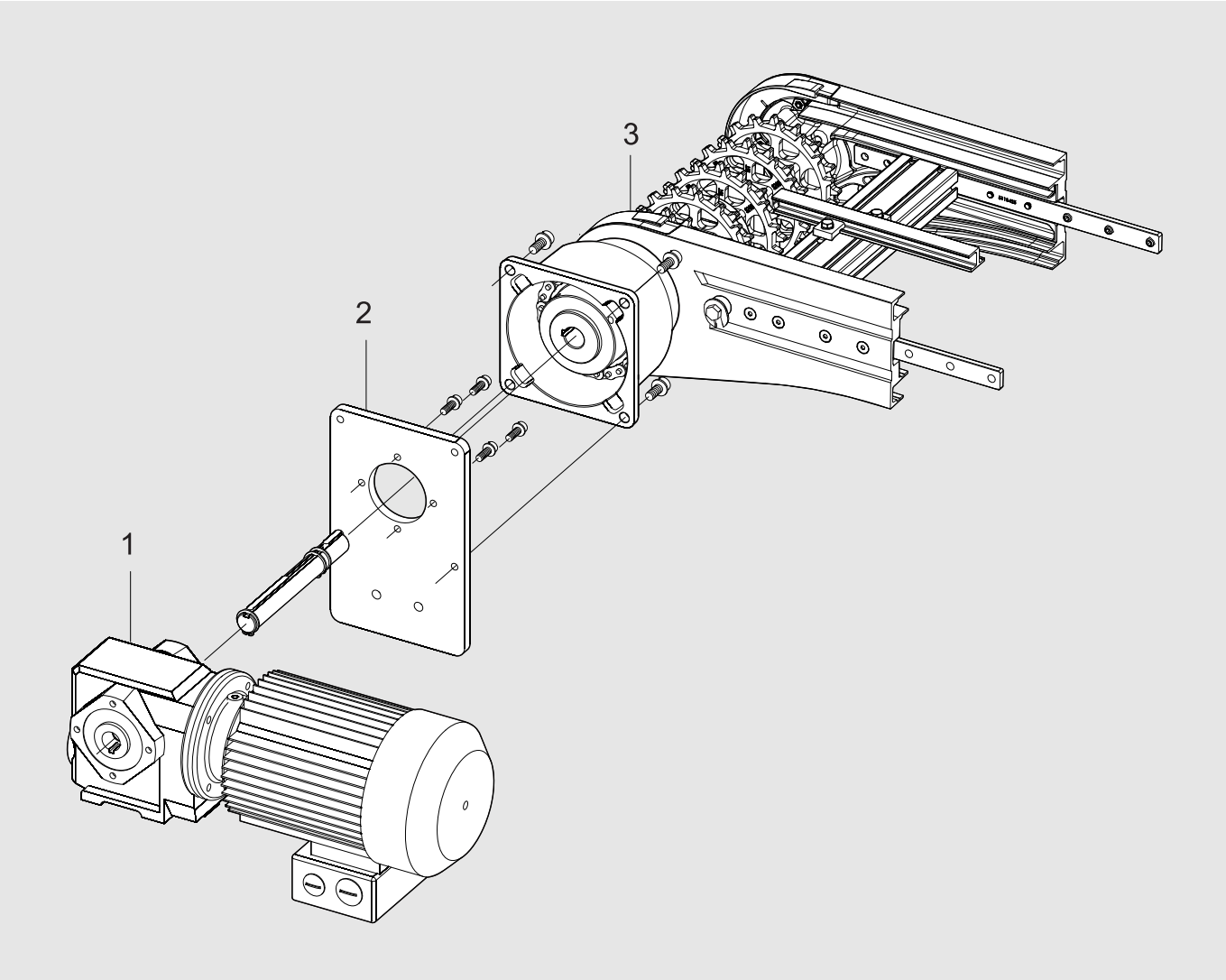
Item	Description	Part No	Qty	Comments	Recommended Spare parts
1	Motor, see Drive unit guide 5014		1		
2	O-unit	WLEB 0A322N_P WLEB 0A424N_P WLEB 0A626N_P	1		

**0-unit WLEB 0A322N\_P, WLEB 0A424N\_P, WLEB 0A626N\_P**

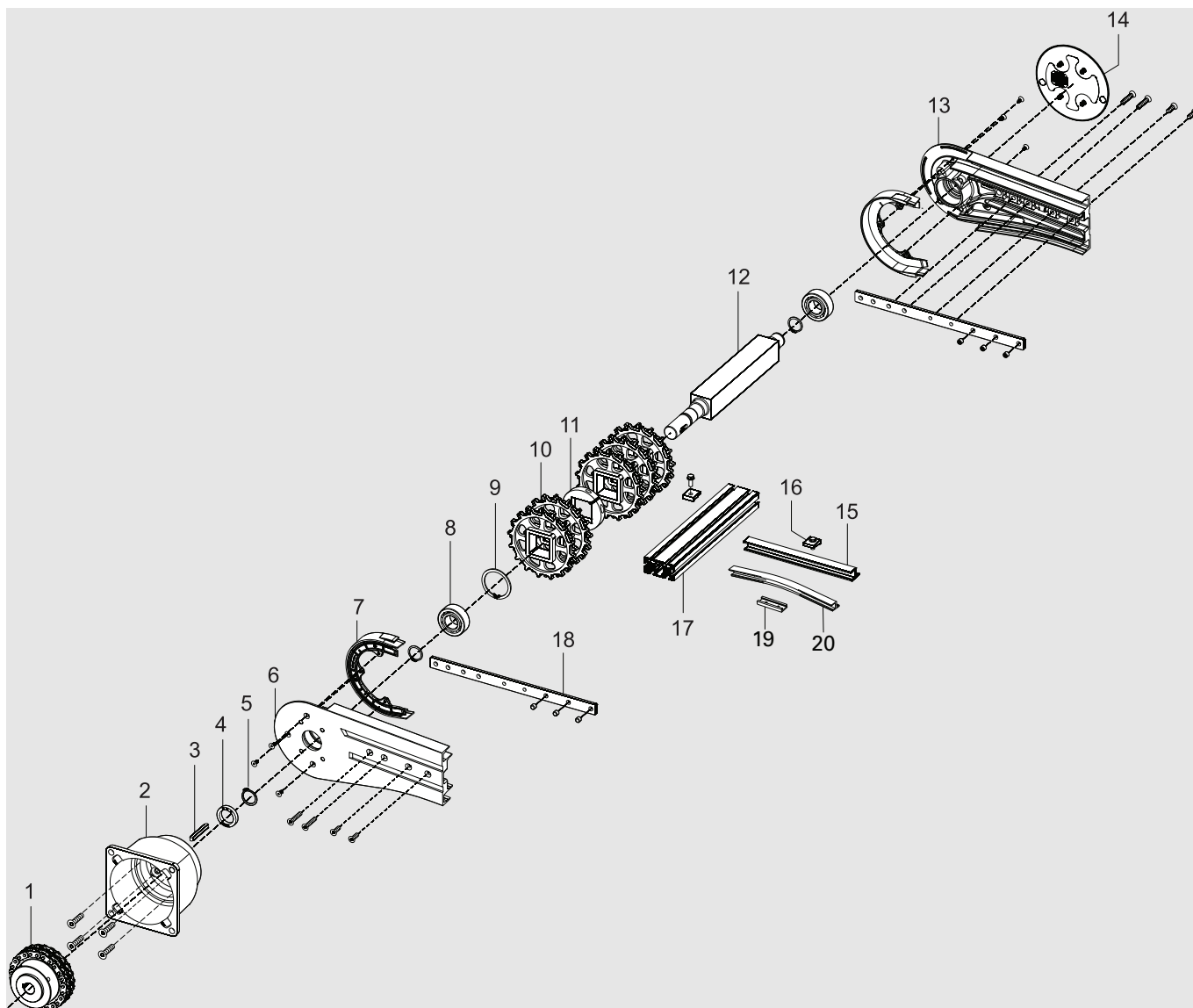
**End drive units, direct drive, no slip clutch**

Item	Description	Part No	Qty	Comments	Recommended Spare parts
1	Torque arm kit	8050022	1		X
2	Side plate L	5125055	1		
3	Spare part kit	5129586	1	Guide x2, screw x6	
4	Retaining ring	DIN 471	2	25 St	
5	Bearing	2205E-2RS1TN9/C3	2		
6	Retaining ring	DIN 472 52 St	1		
7	Drive wheel kit*	5122761	5	For WLEB 0A322N_P, Kit contains 1 wheel	X
	Drive wheel kit*	5122761	5	For WLEB 0A424N_P, Kit contains 1 wheel	X
	Drive wheel kit*	5122761	7	For WLEB 0A626N_P, Kit contains 1 wheel	X
8	Retaining ring	5115430	2		
9	Drive shaft	5115427	1	For WLEB 0A322N_P	
	Drive shaft	5115433	1	For WLEB 0A424N_P	
	Drive shaft	5115435	1	For WLEB 0A626N_P	
10	Side plate R	5125053	1		
11	Cover plate	5059568	1		
12	Support profile	WLCN Lx20	1	L=210 mm. For WLEB 0A322N_P	
	Support profile	WLCN Lx20	1	L=210 mm. For WLEB 0A424N_P	
	Support profile	WLCN Lx20	2	L=210 mm. For WLEB 0A626N_P	
13	Cleat	XWCP 20	2	For WLEB 0A322N_P	
	Cleat	XWCP 20	2	For WLEB 0A424N_P	
	Cleat	XWCP 20	4	For WLEB 0A626N_P	
14	Beam	8050025	1	For WLEB 0A322N_P	
	Beam	8050027	1	For WLEB 0A424N_P	
	Beam	8050028	1	For WLEB 0A626N_P	
15	Connecting strip	5115425	2		
16	Connecting sleeve	8050045	1	For WLEB 0A322N_P	
	Connecting sleeve	8050045	1	For WLEB 0A424N_P	
	Connecting sleeve	8050045	3	For WLEB 0A626N_P	
17	Support profile	8050047	1	For WLEB 0A626N_P	

End drive units, direct drive with slip clutch WLEB



Item	Description	Part No	Qty	Comments	Recommended Spare parts
1	Motor, see Drive unit guide 5014		1		
2	Adapter plate Incl. bolts, washers and shaft	3920088	1		
3	O-Unit	WLEB 0A322_P WLEB 0A424_P WLEB 0A626_P	1		

**0-unit WLEB 0A322\_P, WLEB 0A424\_P, WLEB 0A626\_P**



**End drive units, direct drive with slip clutch**

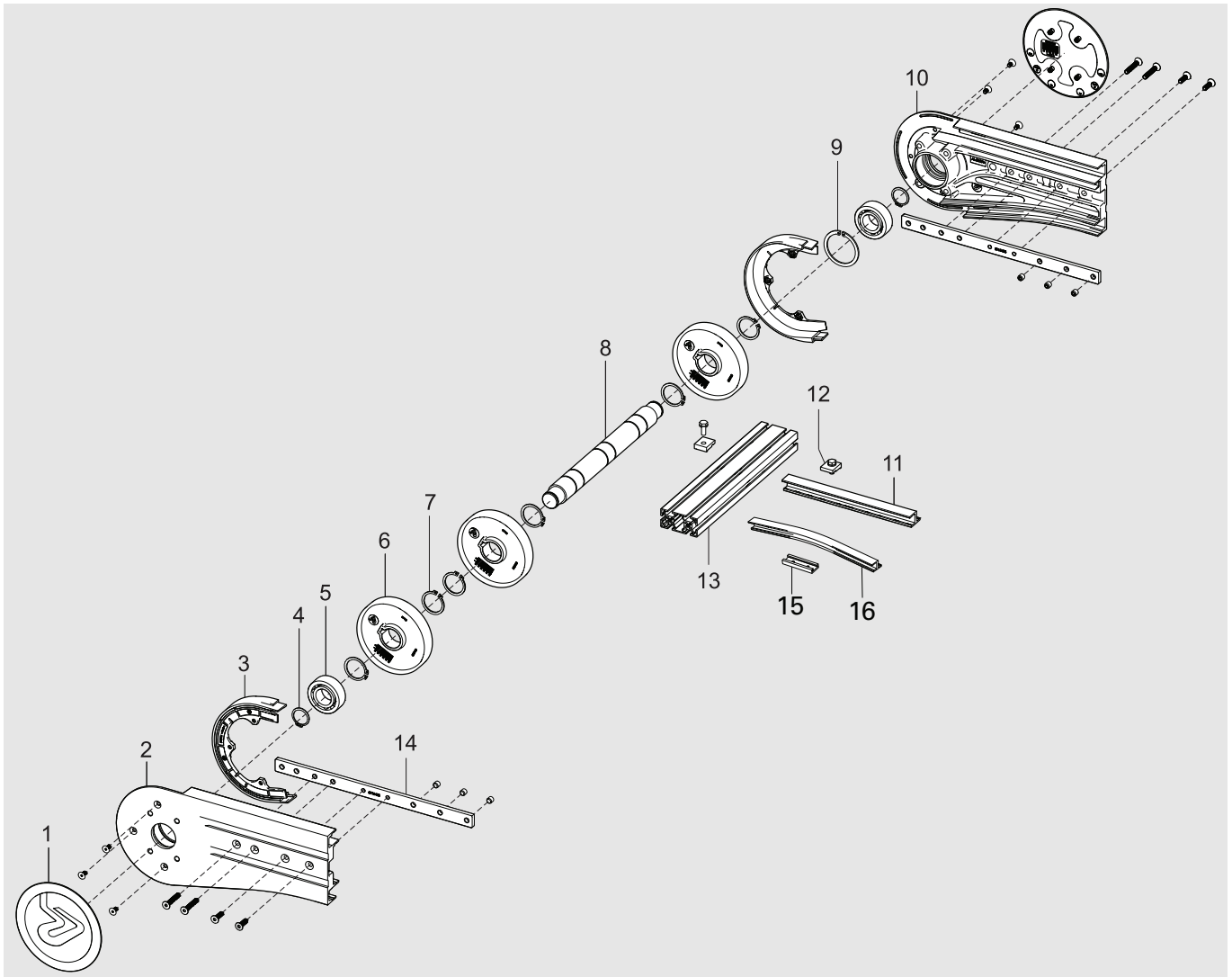
Item	Description	Part No	Qty	Comments	Recommended Spare parts
1	Slip clutch Ø25 mm	3925774	1		X
2	Flange	3920084	1		
3	Thin parallel key	DIN 6885A h9	1	8x7x25	
4	Spacer	3921652	1		
5	Retaining ring	DIN 471	3	25 St	
6	Side plate L	5125055	1		
7	Spare part kit	5129586	1	Guide x2, screw x6	
8	Bearing	2205E- 2RS1TN9/C3	2		
9	Retaining ring	DIN 472	1	52 St	
10	Drive wheel kit*	5122761	5	For WLEB 0A322_P. Kit contains 1 wheel	X
	Drive wheel kit*	5122761	5	For WLEB 0A424_P. Kit contains 1 wheel	X
	Drive wheel kit*	5122761	7	For WLEB 0A626_P. Kit contains 1 wheel	X
11	Retaining ring	5115430	2		
12	Drive shaft	5115442	1	For WLEB 0A322_P	
	Drive shaft	5115444	1	For WLEB 0A424_P	
	Drive shaft	5115446	1	For WLEB 0A626_P	
13	Side plate R	5125053	1		
14	Cover plate	5059568	1		
15	Support profile	WLCN Lx20	1	L=210 mm. For WLEB 0A322_P	
	Support profile	WLCN Lx20	1	L=210 mm. For WLEB 0A424_P	
	Support profile	WLCN Lx20	2	L=210 mm. For WLEB 0A626_P	
16	Cleat	XWCP 20	2	For WLEB 0A322_P	
	Cleat	XWCP 20	2	For WLEB 0A424_P	
	Cleat	XWCP 20	4	For WLEB 0A626_P	
17	Beam	8050025	1	For WLEB 0A322_P	
	Beam	8050027	1	For WLEB 0A424_P	
	Beam	8050028	1	For WLEB 0A626_P	
18	Connecting strip	5115425	2		
19	Connecting sleeve	8050045	1	For WLEB 0A322N_P	
	Connecting sleeve	8050045	1	For WLEB 0A424N_P	
	Connecting sleeve	8050045	3	For WLEB 0A626N_P	
20	Support profile	8050047	1	For WLEB 0A626N_P	

# Spare parts Idler end unit - WL

Technical information from FlexLink

## Idler end units

WLEJ 300A322, WLEJ 300A424, WLEJ 300A626



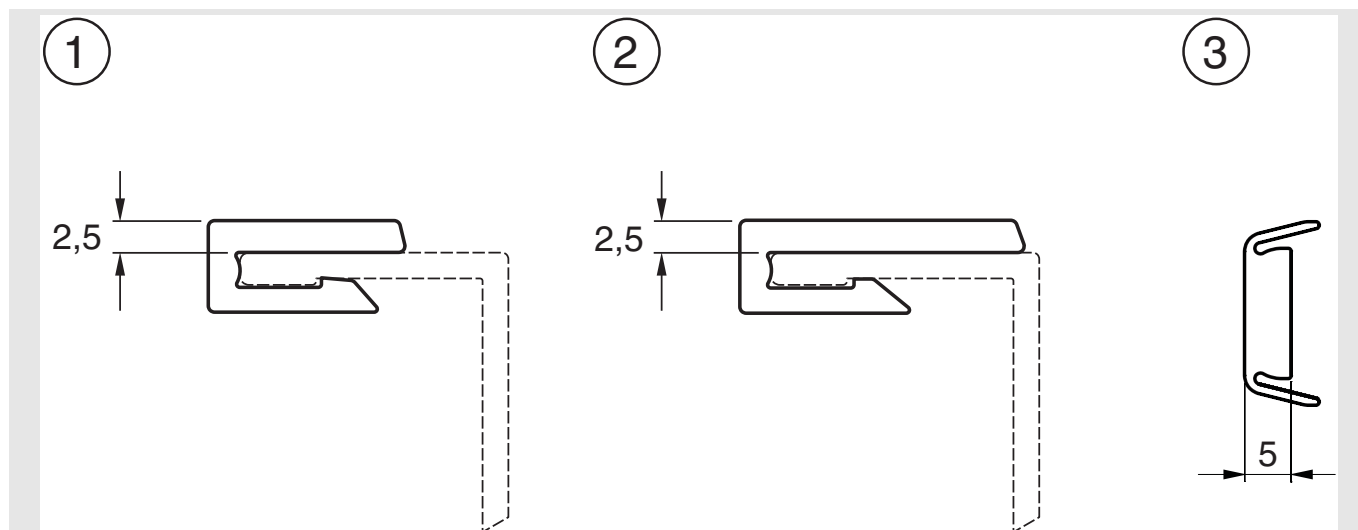
Item	Description	Part No	Qty	Comments	Recommended Spare parts
1	Cover plate	5059568	2		
2	Side plate L	5125055	1		
3	Spare part kit	5129586	1	Guide x2, screw x6	
4	Retaining ring	DIN 471	2	25 St	
5	Bearing	2205E-2RS1TN9/C	2		
6	Wheel kit	5117474	1	For WLEJ 300A322. Kit contains 3 wheels	X
	Wheel kit	5117474	1	For WLEJ 300A424. Kit contains 3 wheels	X
	Wheel kit	5117480	1	For WLEJ 300A626. Kit contains 5 wheels	X
7	Retaining ring	DIN 471	6	For WLEJ 300A322. 30 St	
	Retaining ring	DIN 471	6	For WLEJ 300A424. 30 St	
	Retaining ring	DIN 471	10	For WLEJ 300A626. 30 St	
8	Shaft	5115451	1	For WLEJ 300A322	
	Shaft	5115454	1	For WLEJ 300A424	
	Shaft	5115456	1	For WLEJ 300A626	
9	Retaining ring	DIN 472	1	52 St	
10	Side plate R	5125053	1		
11	Support profile	WLCN Lx20	1	L=210 mm. For WLEJ 300A322	
	Support profile	WLCN Lx20	1	L=210 mm. For WLEJ 300A424	
	Support profile	WLCN Lx20	2	L=210 mm. For WLEJ 300A626	
12	Cleat	XWCP 20	2	For WLEJ 300A322	
	Cleat	XWCP 20	2	For WLEJ 300A424	
	Cleat	XWCP 20	4	For WLEJ 300A626	
13	Beam	8050025	1	For WLEJ 300A322	
	Beam	8050027	1	For WLEJ 300A424	
	Beam	8050028	1	For WLEJ 300A626	
14	Connecting strip	5115425	2		
15	Connecting sleeve	8050045	1	For WLEJ 300A322	
	Connecting sleeve	8050045	1	For WLEJ 300A424	
	Connecting sleeve	8050045	3	For WLEJ 300A626	
16	Support profile	8050047	1	For WLEJ 300A626	

# Spare parts Slide rails - WL

Technical information from FlexLink

5674EN-2

## Spare parts Slide rails - WL



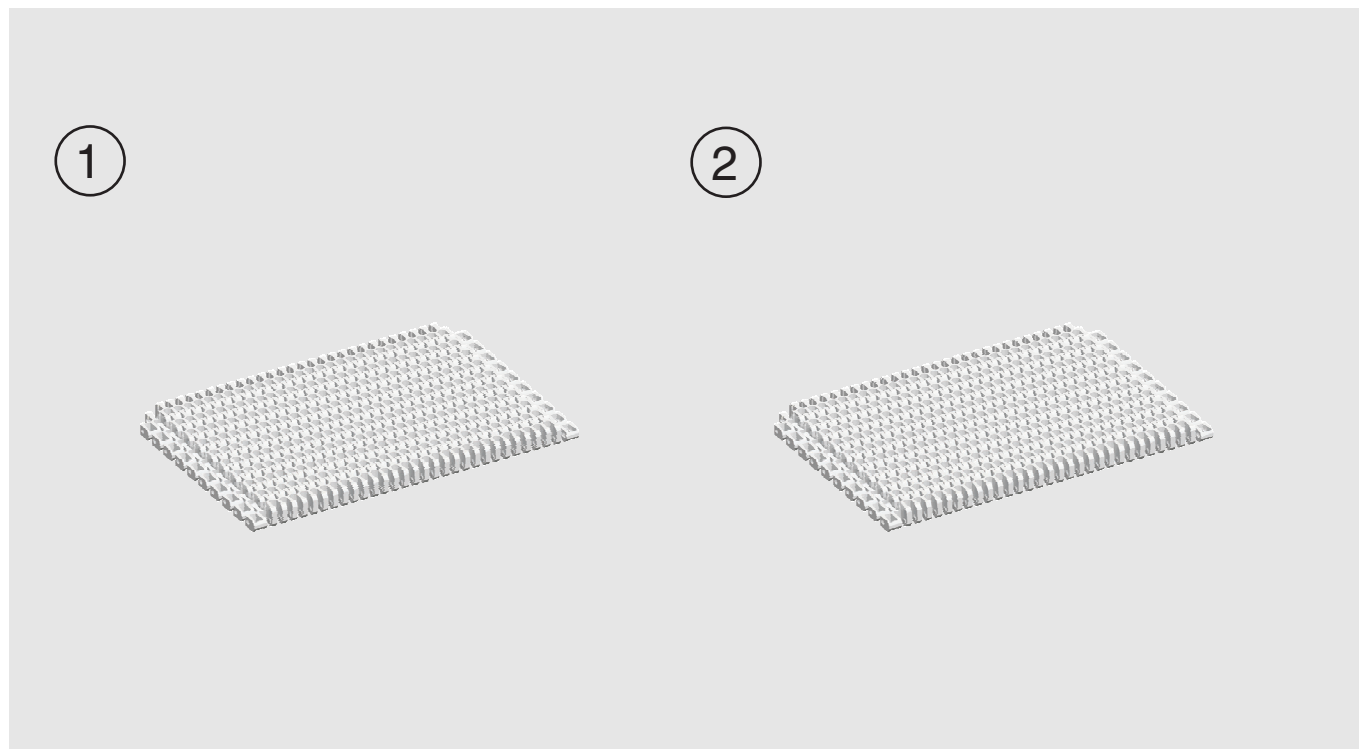
Item	Description	Part No	Qty	Comments	Recommended Spare parts
1	Slide rail, PA-PE (Grey)	XBCR 25 H			
2	Slide rail, PA-PE (Grey)	XBCR 25 HB			
3	Support rail, PA-PE (Grey)	WLCS 25x5 H			



# Spare parts Chains - WL

Technical information from FlexLink

## Spare parts Chains - WL



Item	Description	Part No	Qty	Comments	Recommended Spare parts (Based on previous chain in the Conveyor system)
1	Plain belt, Acetal			Length 1 m	
	304 mm wide, WL 322	WLTP 1A304L H			
	406 mm wide, WL 424	WLTP 1A406L H			
	608 mm wide, WL 626	WLTP 1A608L H			
2	Friction top belt, Polypropylene			Length 1 m	
	304 mm wide, WL 322	WLTP 1A304 FA			
	406 mm wide, WL 424	WLTP 1A406 FA			
	608 mm wide, WL 626t	WLTP 1A608 FA			
	Plain belt, Acetal			Length 1 m	
*	304 mm wide, WL 322	WLTP 1A304 H			
*	406 mm wide, WL 424	WLTP 1A406 H			
*	608 mm wide, WL 626	WLTP 1A608 H			
*For use with belt delivered before April 2019					

