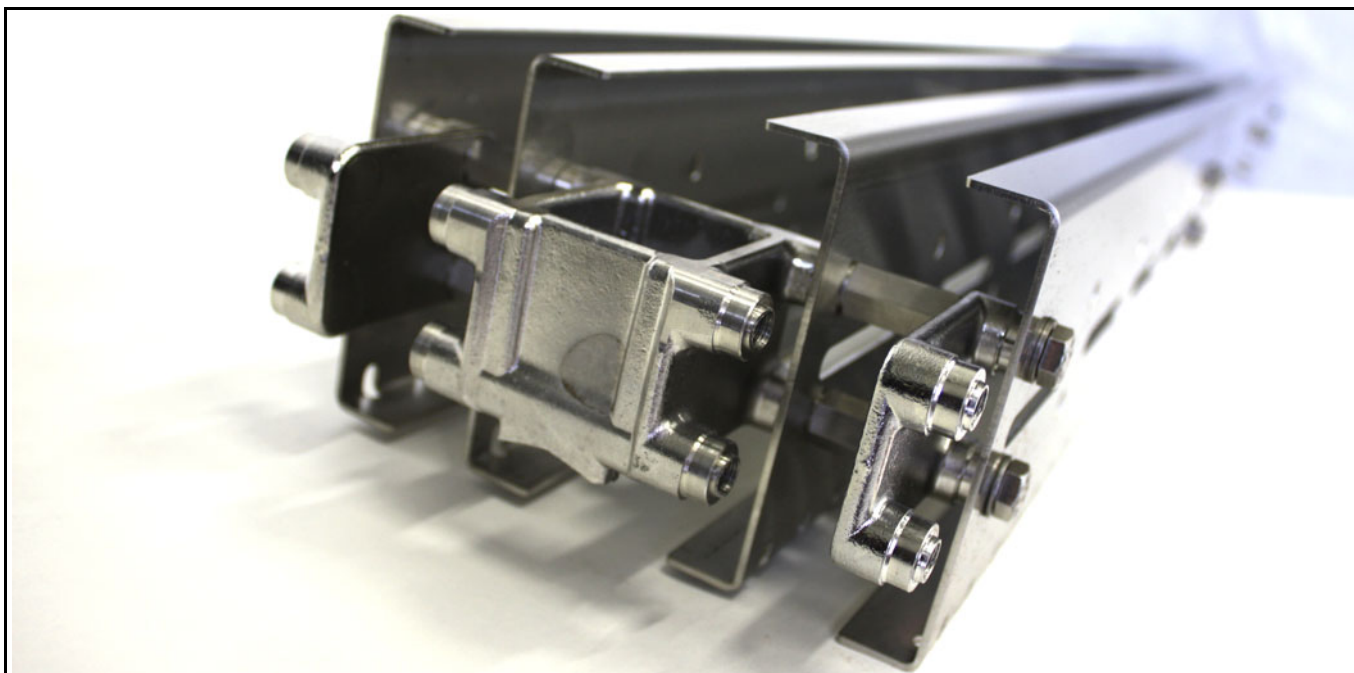


# Stainless steel conveyor system X180X, X180Y, X180C

## Contents

System information.....	61	End drive units .....	69
Conveyor chain .....	62	Idler units .....	71
Chain accessories .....	62	Bridges .....	72
Conveyor beams .....	63	Drip catcher.....	73
Slide rails .....	65	Transfer units .....	74
Tools for conveyor beam.....	66	Plain bends.....	75
Drive and idler units – Introduction.....	67	Vertical bends.....	77
Drive units – configuration strings .....	68		

## System information



PO  
X70X  
X85X  
X180X  
X300X  
WL  
222X

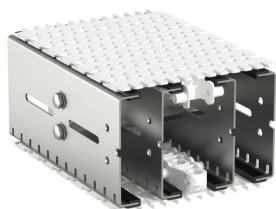
### Conveyor with focus on robustness and cleanliness

**X180X - Standard version:** Designed to suit the requirements of food and packaging applications.

**X180Y - Covered return chain version:** Designed with self-drainage to avoid malfunction of the chain in case of machine spillage.

**X180C - Wipe off version:** Closed surface design with minimum holes or slots for easier cleaning and even better hygiene.

### Chain width 175 mm



X180X

### Environment

- Operating temperatures –20 °C to +60 °C
- Operating humidity 10% to 95% RH
- See chapter Technical reference for Noise level

### Improved cleanliness conveyor

The X180X conveyor system has been evaluated based on field experience and suggestions from customers. With focus on structure rigidness and robustness, easy design, and easier cleaning, several components have been improved with features like better drainage and smaller contact surfaces.

### Technical characteristics

Drive unit capacity .....	1250 N
Chain tension limit .....	1250 N
Beam width .....	180 mm
Chain width .....	175 mm
Chain pitch.....	33,5 mm
Item width .....	70–400 mm
Maximum item weight.....	15 kg
Maximum weight on conveyor .....	200 kg
Maximum conveyor length.....	30 m

WL  
273X

WL  
374X

WL  
526X

WL  
678X

CSX

GRX

FSTX

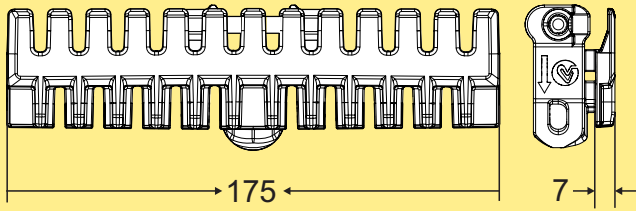
TR

APX

IDX

## Conveyor chain

### Plain chain



Plain chain  
Length 3 m

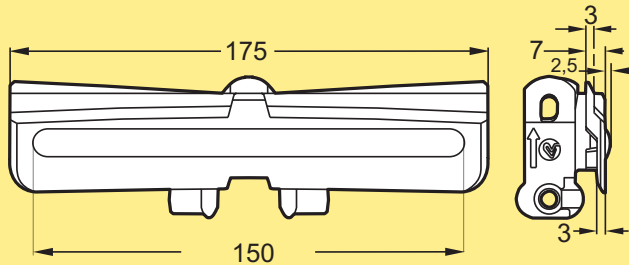
**XBTPX 3A180 K**

Plain link kit \*

**FLX1004629**

\* Link kit contains 10 links, 10 pivots, 10 steel pins

### Friction top chain



Friction top chain  
Length 3 m

**XBTP 3A175 FP**

Use the online configurator to specify and order.

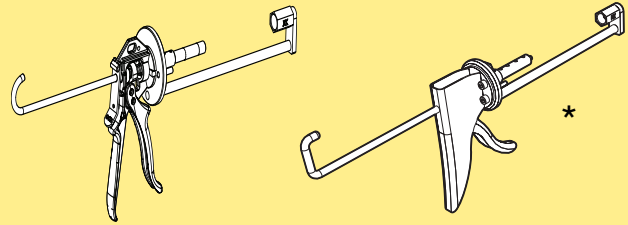
Friction top link kit \*

**5056653**

\* Link kit contains 10 links, 10 pivots, 10 steel pins

## Chain accessories

### Pin insertion tool for chain

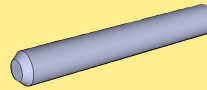


Pin insertion tool  
X85-X180/X300  
X85-X180/X300-XH, PRO ver-  
sion\*

**XMMJ 6**  
**XBMJ 6 P**

\*This tool is recommended for frequent users

### Stainless steel pin

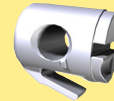


Steel pin  
Stainless steel

**5111172**

Steel pin kit, 25 pc

### Plastic pivot for chain



Plastic pivot kit

**5111169**

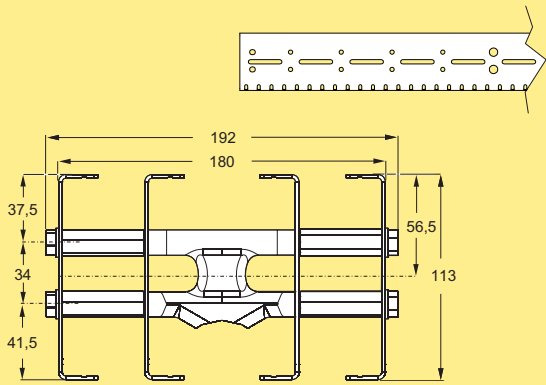
Spare parts kit, contains 25 pcs.

## Other chains

See the Chain guide for selection of other chains.

# Conveyor beams

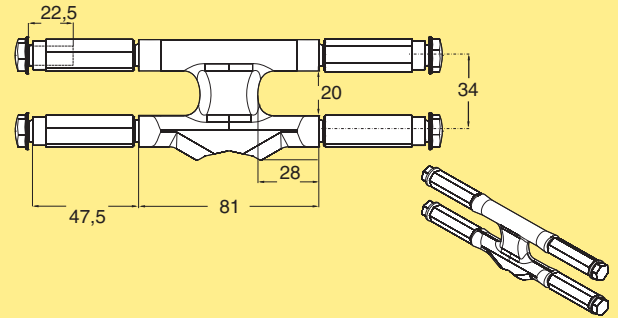
## Conveyor beam, 180 mm



Conveyor Beam  
 Length 3 m (3000 ±1,5 mm) **XBCBX 3A180**  
 Length to order (150- 2999 mm) **XBCBX LA180**

All X180X beams are delivered fully assembled.

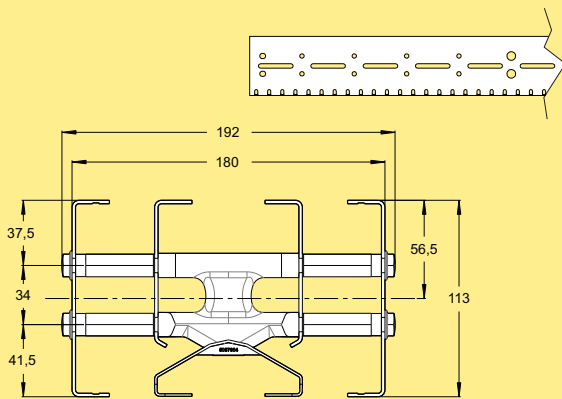
## Beam spacer kit



Beam spacer kit  
 Stainless steel  
 Beam spacer kit for X180X **XBCEX A180**

Including screws.  
 The beams have predrilled 8 mm holes at 100 mm intervals that need to be increased to 10 mm.

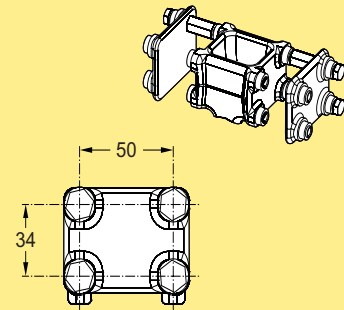
## Conveyor beam type Y, 180 mm



Conveyor Beam  
 Length 3 m (3000 ±1,5 mm) **XBCBX 3A180Y**  
 Length to order (150- 2999 mm) **XBCBX LA180Y**

All X180Y beams are delivered fully assembled.  
 Screw Kit 5114562 included

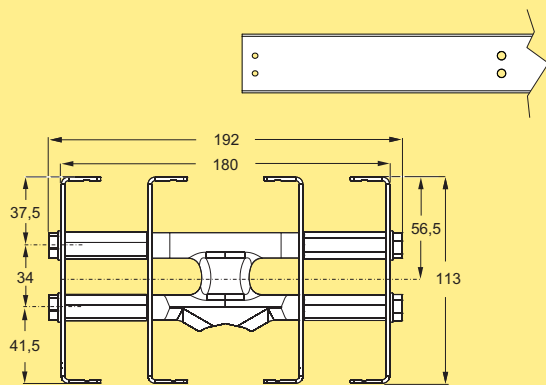
## Connecting bracket kit



Connecting bracket kit  
 Stainless steel  
 Connecting bracket kit for X180X **XBCJX A180**

Including screws.  
 The beams have pre drilled 10 mm holes, see XBCBX 3A85

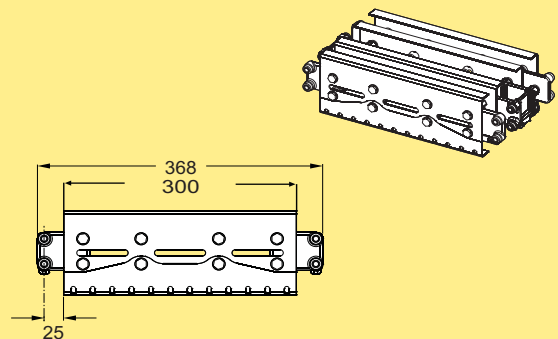
## Conveyor beam type C, 180 mm



Conveyor Beam  
 Length 3 m (3000 ±1,5 mm) **XBCBX 3A180C**  
 Length to order (150- 2999 mm) **XBCBX LA180C**

All X180C beams are delivered fully assembled.

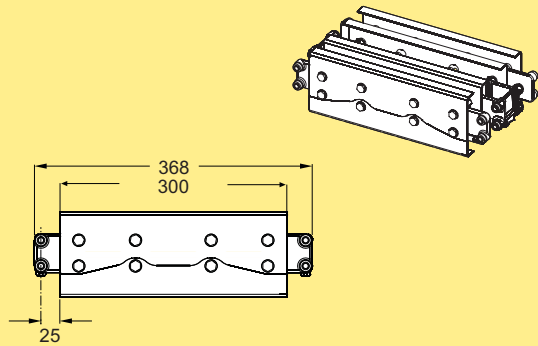
## Beam section for chain installation



Beam section for chain installation.  
 Including 2 Connecting bracket kit XBCJX A180 and mounting instruction **XBCCX 300A180**

P0  
 X70X  
 X85X  
**X180X**  
 X300X  
 WL 222X  
 WL 273X  
 WL 374X  
 WL 526X  
 WL 678X  
 CSX  
 GRX  
 FSTX  
 TR  
 APX  
 IDX

## Beam section for chain installation

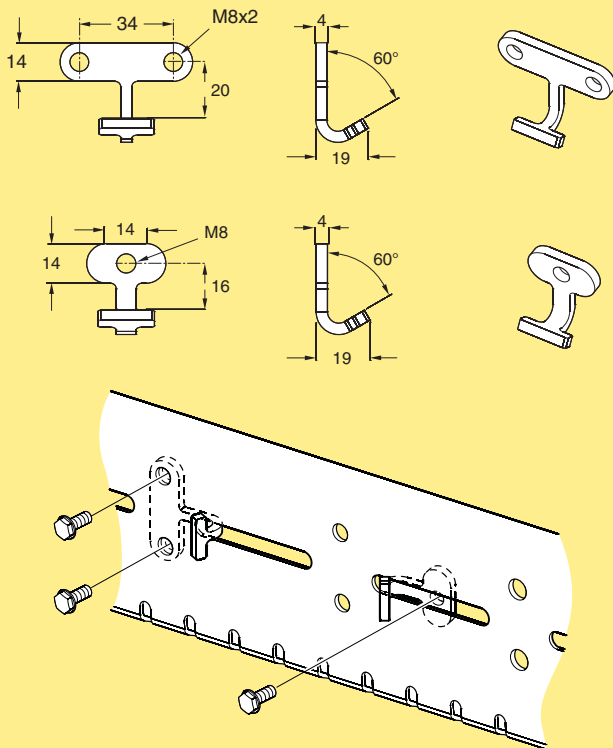


Beam section for chain installation.

**XBCCX 300A180C**

Including 2 Connecting bracket kit XBCJX A180 and mounting instruction

## Nut, stainless steel



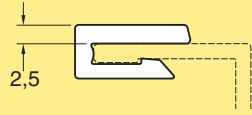
Nut M8x2  
Nut M8x1

**5113998**  
**5114181**

*Nut with threaded hole (M8) for connection of sensors and other accessories when the conveyor chain is in place. By placing nuts inside the beam at the holes, accessories can be attached using M8 A4 screws.  
**NOTE!** Be careful when installing so no nut is dropped inside the beam, this can lead to a large additional work or operational damage.*

# Slide rails

## Plastic slide rails, narrow

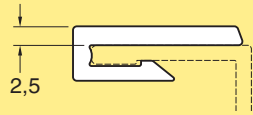


Slide rail

Length 25 m  
 HDPE (Black)  
 PE-UHMV (White)  
 PE-UHMW (Blue)  
 PVDF (Transparent white)  
 PA-PE (Grey) (Should not be used in wet applications)

**XBCR 25**  
**XBCR 25 U**  
**XBCR 25 UL A**  
**XBCR 25 P**  
**XBCR 25 H**

## Plastic slide rails, wide



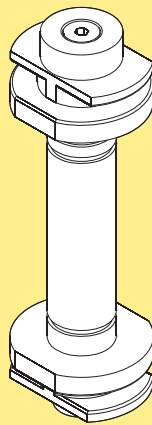
Slide rail

Length 25 m  
 HDPE (Black)  
 PE-UHMV (White)  
 PVDF (Transparent white)  
 PA-PE (Grey) (Should not be used in wet applications)

**XBCR 25 B**  
**XBCR 25 UB**  
**XBCR 25 PB**  
**XBCR 25 HB**

*Note. The wide slide rails are not suitable for use in bends.*

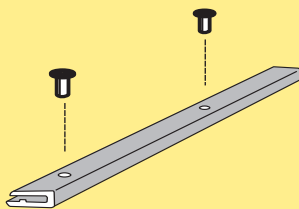
## Mounting tool for slide rail



Mounting tool for slide rail

**XBMR 170**

## Stainless steel rivet

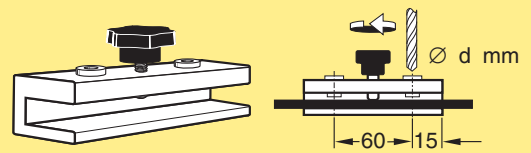


Stainless steel rivet, 4 mm

**XLAHX 4x7**

*Note. Contains 25 pcs.*

## Drill fixture for slide rail



Drill fixture for slide rail  
 d=4,2 mm

**3920500**

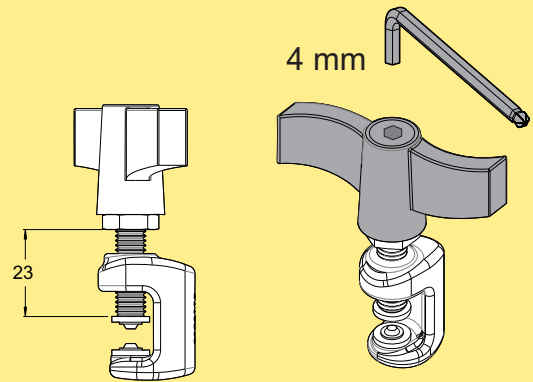
## Rivet crimping pliers



Rivet crimping pliers  
 For 4 mm rivets

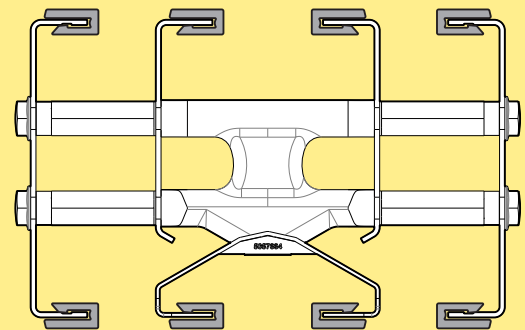
**5051395**

## Rivet crimping clamp



Rivet crimping clamp  
 For 4 mm rivets  
 (note: Allen key not included)

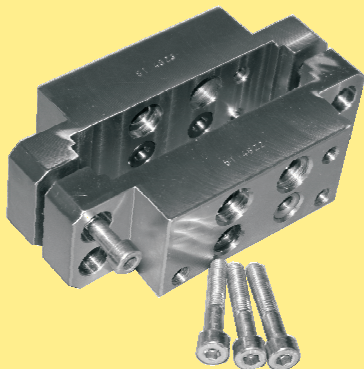
**3923005**



*Note. Always use 8 slide rails*

PO  
 X70X  
 X85X  
 X180X  
 X300X  
 WL 222X  
 WL 273X  
 WL 374X  
 WL 526X  
 WL 678X  
 CSX  
 GRX  
 FSTX  
 TR  
 APX  
 IDX

### Drill fixture



Drill fixture **5114621**

*For use when additional holes are needed on the beam sides.*

*Including:*

*Drill 4,5 mm*

*Drill 8,3 mm*

*Drill 11,0 mm*

*and instructions for use.*

### Drill



Twist Drills DIN 338 HSS-E (Co 8)

Type N-HD Cobalt Alloyed, Split Point

Drill 11,0 mm **5115050**

Drill 10,2 mm **5115056**

Drill 8,3 mm **5115051**

Drill 4,5 mm **5115052**

Drill 4,2 mm (for 3920500) **5115053**

*For high strength alloys on CrNi base such as Hastelloy, Inconel, Monel, Nimonic, stainless steels, heat and acid-proof steels (up to 1400 N/mm<sup>2</sup> tensile strength).*

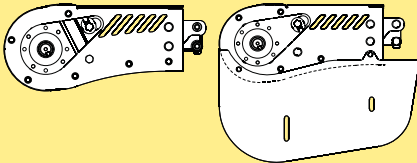
# Drive and idler units – Introduction

## Drive unit types

The X180X system drive unit capacities is maximum 1250 N. The actual capacity depends on the speed.

Available motors include variable speed types (**V**) as well as fixed speed motors (**F**).

### End drive units

Size	Direct drive, no slip clutch
	
Drive unit	F, V
Drive unit, guided	F, V

## Motor specifications

Motors are available for 230/400 V, 50 Hz and 230/460 V, 60 Hz. Variable speed motors are SEW Movimot, 380–500 V. Note that variable speed motors include a control box that adds 120 mm to the width of the motor.

IP55 available with standard oil.

IP65 available with food grade oil.

## Idler unit types

Idler units are available in two versions, Compact and Standard.

## Ordering information

Drive units with motors must be specified using the web-based configurator. The configurator provides detailed information and step-by-step guidance in the specification process. A product code string is generated, containing the specification details. See next page for examples of code strings.

Drive units *without* motors can be ordered using the designations in the catalogue.

## Dimension

Note that dimensions relating to drive unit motors depend on the motor specified during the configuration.

P0

X70X

X85X

X180X

X300X

WL  
222X

WL  
273X

WL  
374X

WL  
526X

WL  
678X

CSX

GRX

FSTX

TR

APX

IDX

## Drive units – configuration strings

Below, two examples of text strings obtained from the configurator with explanations are presented.

### Drive unit with fixed speed motor

Item no	A	B	C	D	E	G	H	I
<b>XBEBX A180</b>	<b>HNP</b>	<b>- L</b>	<b>- G</b>	<b>- V4</b>	<b>- SA37</b>	<b>- 50/230</b>	<b>- 0,18kW</b>	<b>- TF</b>

### Drive unit with variable speed motor

Item no	A	B	D	E	F	G	J	K
<b>XBEBX A180</b>	<b>HNPV</b>	<b>- L</b>	<b>- V6-15</b>	<b>- SA37</b>	<b>- MM03</b>	<b>- 50/380-500</b>	<b>- C</b>	<b>- P</b>

#### Item no - Drive type

XBEBX: End drive

#### A – 0-Unit

HNP: Direct drive, no slip clutch  
...V: Variable speed

#### B – Motor position

L: Left  
R: Right

#### C – End drive with guided chain

G: Guided (position is omitted for non-guided)

#### D – Speed

V...: Fixed speed... m/min  
V...-...: Variable speed range...-... m/min

#### E – Gearbox

SA37: SEW motor type SA37  
WA30: SEW gear box type WA30

#### F – Movimot size

MM03: SEW Movimot type, 0,37 kW  
MM05: SEW Movimot type, 0,55 kW  
MM07: SEW Movimot type, 0,75 kW  
MM11: SEW Movimot type, 1,1 kW  
(position is omitted for fixed speed motors)

#### G – Electrical environment

50/230: 50 Hz, 230 V  
50/400: 50 Hz, 400 V  
60/230: 60 Hz, 230 V  
60/460: 60 Hz, 460 V  
50/380-500: SEW Movimot variable speed motor

#### H – Motor power

... kW: Motor power, kW  
(position is omitted for variable speed motors  
see position F)

#### I – Thermal protection

No: No thermal protection  
TF: Thermal protection type TF  
TH: Thermal protection type TH  
(position is omitted for variable speed motors)

#### J – Hybrid cable

No: No hybrid cable  
C: Hybrid cable included in SEW Movimot  
(position is omitted for fixed speed motors)

#### K – Fieldbus

No: No fieldbus  
P: Profibus fieldbus, maintenance switch  
D: DeviceNet fieldbus, maintenance switch  
(position is omitted for fixed speed motors)

**End drive unit, direct drive, no slip clutch**

End drive unit  
 Direct drive. No slip clutch.  
 Maximum traction force: up to 1250 N.  
 Maximum speed 80 m/min for X180X.

Motor on left side:

Fixed/variable speed *	<b>XBEBX A180</b>
Without motor	<b>XBEBX0A180HNLP</b>

Motor on right side (not shown):

Fixed/variable speed *	<b>XBEBX A180</b>
Without motor	<b>XBEBX0A180HNRP</b>

*\* Use online configurator when ordering.*  
 Effective track length: 0,70 m

**End drive unit, direct drive, no slip clutch**

End drive unit  
 Direct drive. No slip clutch.  
 Maximum traction force: up to 1250 N.  
 Maximum speed 80 m/min for X180X.

Motor on left side:

Fixed/variable speed *	<b>XBEBX A180C</b>
Without motor	<b>XBEBX0A180HNLP</b>

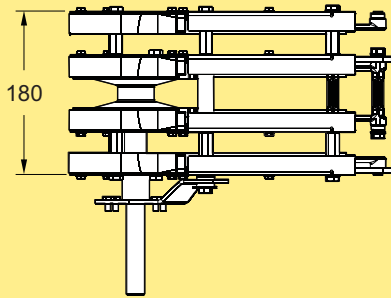
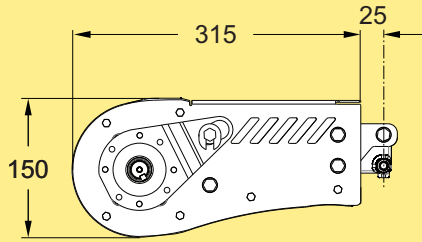
Motor on right side (not shown):

Fixed/variable speed *	<b>XBEBX A180C</b>
Without motor	<b>XBEBX0A180HNRPC</b>

*\* Use online configurator when ordering.*  
 Effective track length: 0,70 m

- P0
- X70X
- X85X
- X180X
- X300X
- WL 222X
- WL 273X
- WL 374X
- WL 526X
- WL 678X
- CSX
- GRX
- FSTX
- TR
- APX
- IDX

### End drive unit, guided chain, no slip clutch



#### End drive unit

Direct drive with guided chain. No slip clutch.  
Maximum traction force: up to 1250 N.  
Maximum speed 80 m/min for X180X.

Motor on left side:

Fixed/variable speed \* **XBEBX A180**  
Without motor **XBEBX0A180HNLGP**

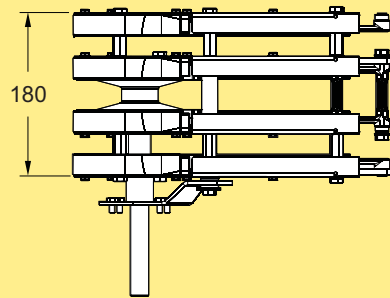
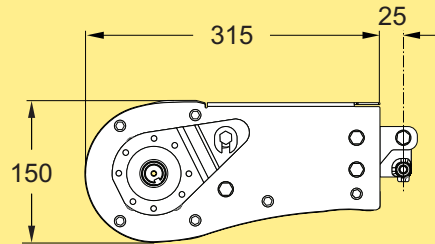
Motor on right side (not shown):

Fixed/variable speed \* **XBEBX A180**  
Without motor **XBEBX0A180HNRGP**

\* Use online configurator when ordering.

Effective track length: 0,70 m

### End drive unit, guided chain, no slip clutch



#### End drive unit

Direct drive with guided chain. No slip clutch.  
Maximum traction force: up to 1250 N.  
Maximum speed 80 m/min for X180X.

Motor on left side:

Fixed/variable speed \* **XBEBX A180C**  
Without motor **XBEBX0A180HNLGPC**

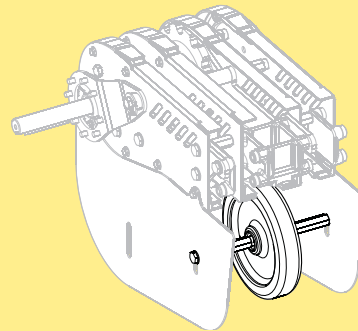
Motor on right side (not shown):

Fixed/variable speed \* **XBEBX A180C**  
Without motor **XBEBX0A180HNRGPC**

\* Use online configurator when ordering.

Effective track length: 0,70 m

### Guide wheel kit 180

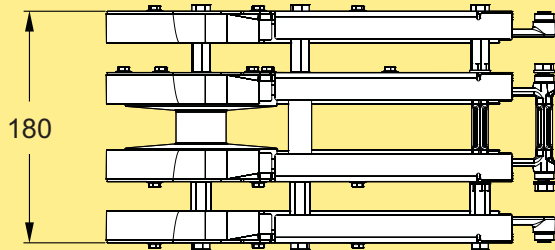
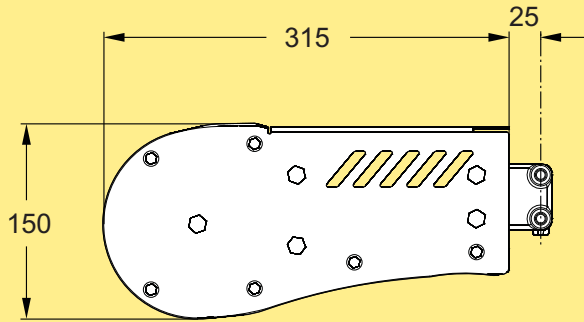


Guide wheel for drive units **5114932**

Including wheel, shaft and mounting hardware.  
Note. Can only be used with plain chain. For use in high speed operation (60 m/min and above).

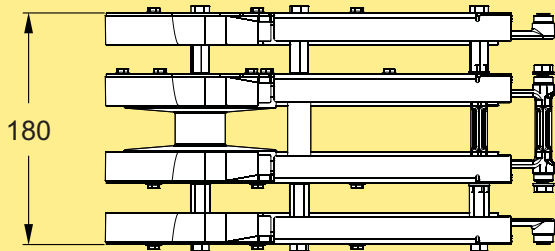
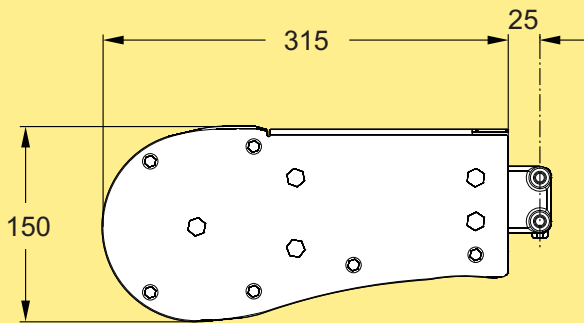
# Idler units

## Idler end unit



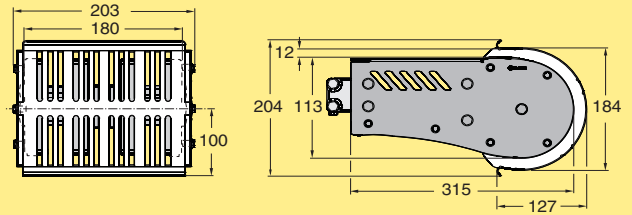
Idler end unit, X180X **XBEJX A180**  
Effective track length: 0,70 m.

## Idler end unit



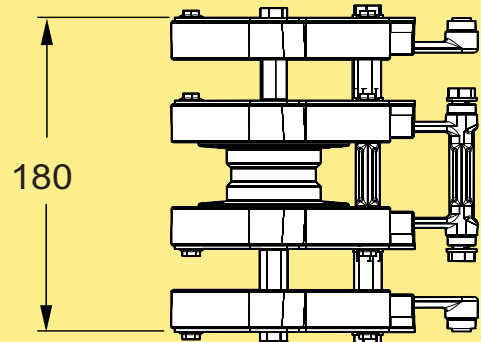
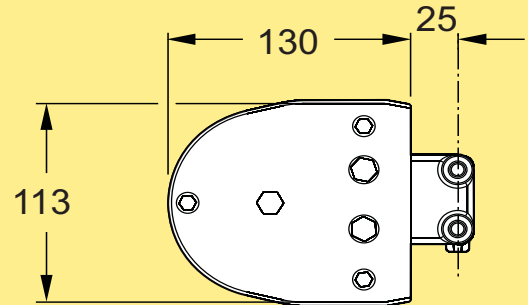
Idler end unit, X180X **XBEJX A180C**  
Effective track length: 0,70 m.

## Protective cover for Idler end



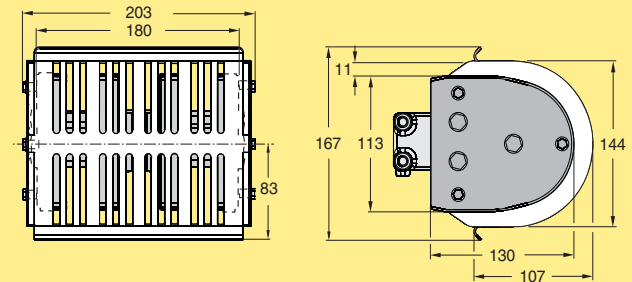
Protective cover for Idler end unit **XBEJX A180** **XBSJX A180**

## Idler end unit, Compact



Idler end unit, compact X180X **XBEJX A180 S**  
Effective track length: 0,35 m.

## Protective cover for Idler end, Compact



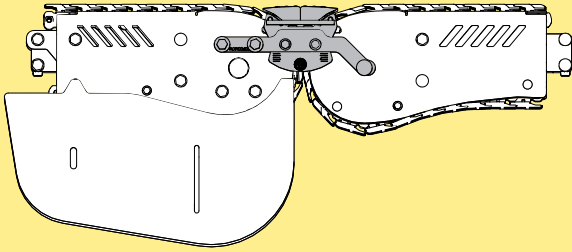
Protective cover for Idler end unit **XBEJX A180 S** **XBSJX A180 S**

### Note!

Always use pinch point protective cover for idler ends to protect persons from clamp risk.

- P0
- X70X
- X85X
- X180X
- X300X
- WL 222X
- WL 273X
- WL 374X
- WL 526X
- WL 678X
- CSX
- GRX
- FSTX
- TR
- APX
- IDX

## Passive bridge from conveyor to conveyor

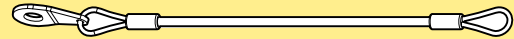


Passive bridge\* **XBNGX A180**

<i>From:</i>	<i>To:</i>
Heavy Drive unit	Heavy Idler
Heavy Drive unit	Compact Idler

\* Use online configurator when ordering.

## Attachment wire

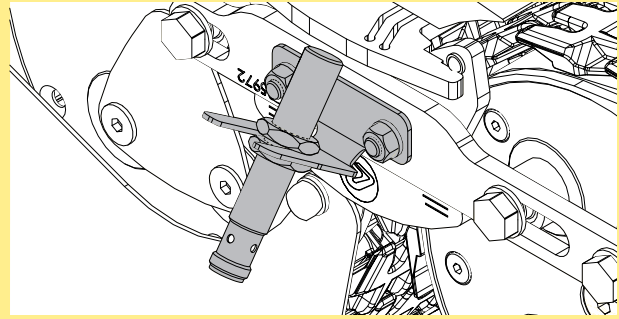


Wire for attaching roller to holder

**FLX1006041**

\*Also available as a configuration option through XBNGX A180.

## Sensor Kit



Bridge in position sensor kit

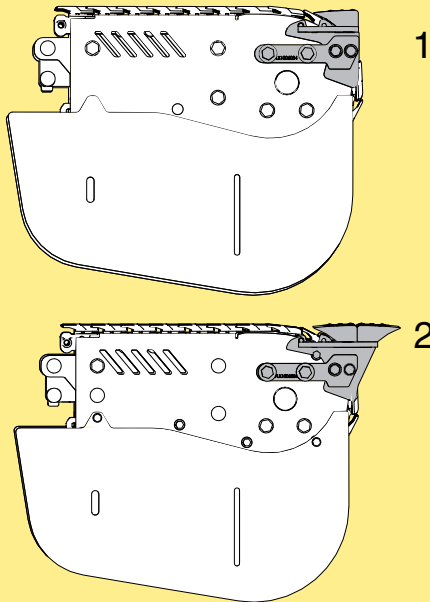
On bridge  
On beam

**FLX1006042**

**FLX1006044**

\*Also available as a configuration option through XBNGX A180.

## Passive bridge, connecting drive/idler to machine or external application



Passive bridge\*  
Single roller (1) or Double roller (2) **XBNGX A180**

<i>From:</i>	<i>To:</i>
Heavy Drive	External
External	Heavy Idler
External	Compact Idler

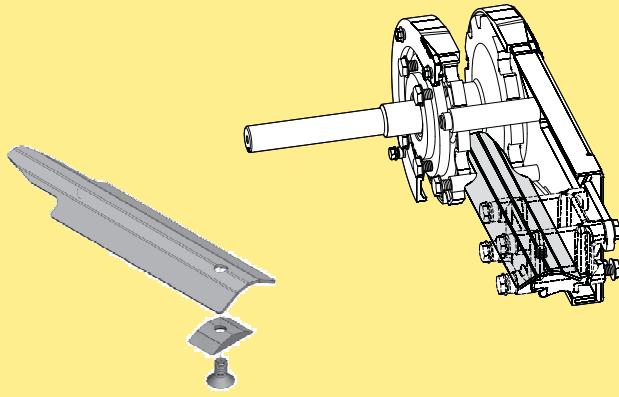
\* Use online configurator when ordering.

\*Note

Bridges can not be used with cleated chain.

# Drip catcher

## Drip catcher kit

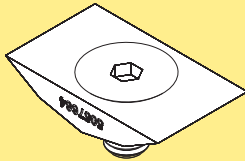


Drip catcher kit

**5114763**

*For drive units and idler ends, to be used together with conveyor beams type Y with protected return beams including 5114562 Screw kit.*

## Screw kit



Screw kit

**5114562**

*For return beam, type Y, 85 mm, or Drip catcher kit.*

PO

X70X

X85X

X180X

X300X

WL  
222X

WL  
273X

WL  
374X

WL  
526X

WL  
678X

CSX

GRX

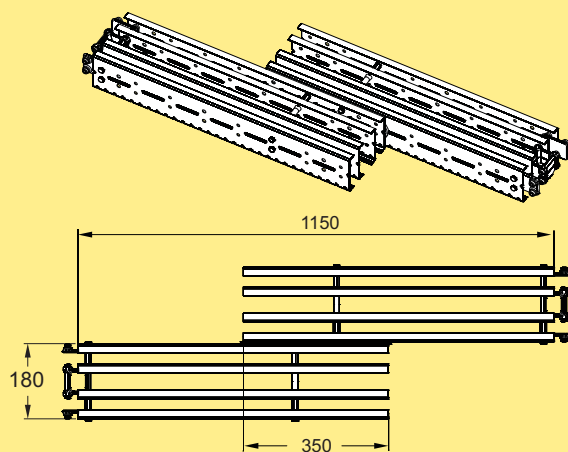
FSTX

TR

APX

IDX

## Side transfer, left

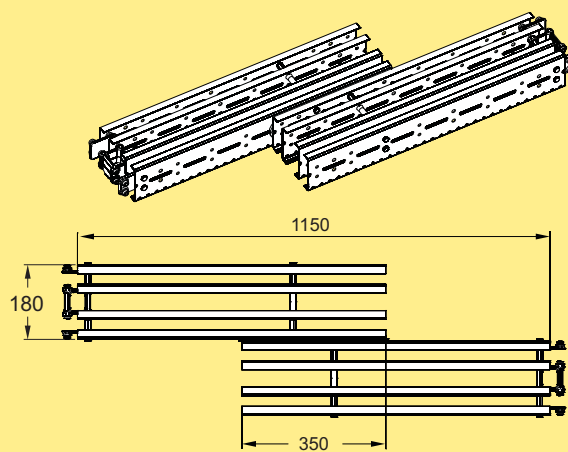


Side transfer

For optional mounting of Idler end unit or Drive unit at the end (A) or (B) **XBCPX 180 L**

*Effective track length: 3 m*

## Side transfer, right

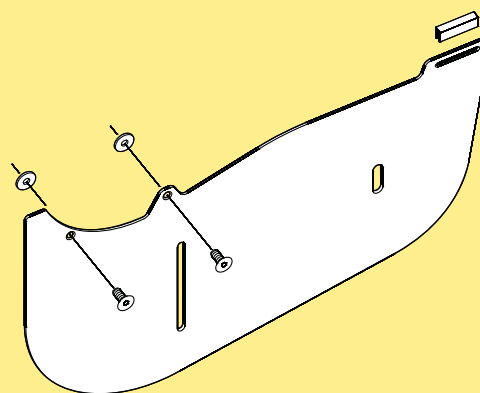


Side transfer

For optional mounting of Idler end unit or Drive unit at the end (A) or (B) **XBCPX 180 R**

*Effective track length: 3 m*

## Slack protection kit



Slack protection kit

**5115027**

*Recommended use when Side transfer is installed with End drive unit H, direct drive, no slip clutch.*

# Plain bends

Item no	Angle (a)	Radius (R)	Effective track length	Slide rails (m)
XBBPX 30A180R5 XBBPX 30A180R5C	30°	500 mm	0,70 m (1,40 m 2-way)	5,30 m
XBBPX 30A180R7 XBBPX 30A180R7C	30°	700 mm	0,80 m (1,60 m 2-way)	6,10 m
XBBPX 30A180R10 XBBPX 30A180R10C	30°	1000 mm	0,92 m (1,85 m 2-way)	7,4 m
XBBPX 45A180R5 XBBPX 45A180R5C	45°	500 mm	0,80 m (1,60 m 2-way)	6,30 m
XBBPX 45A180R7 XBBPX 45A180R7C	45°	700 mm	0,95 m (1,90 m 2-way)	7,50 m
XBBPX 45A180R10 XBBPX 45A180R10C	45°	1000 mm	1,12 m (2,40 m 2-way)	9,5 m
XBBPX 90A180R5 XBBPX 90A180R5C	90°	500 mm	1,20 m (2,40 m 2-way)	9,00 m
XBBPX 90A180R7 XBBPX 90A180R7C	90°	700 mm	1,50 m (3,0 m 2-way)	11,20 m
XBBPX 90A180R10 XBBPX 90A180R10C	90°	1000 mm	2,0 m (4,0 m 2-way)	15,8 m
XBBPX 45A180T10 XBBPX 45A180T10C	$5^\circ \leq a \leq 45^\circ$	$500 \leq R \leq 1000$ mm	-	-
XBBPX 90A180T10 XBBPX 90A180T10C	$45^\circ < a \leq 90^\circ$	$500 \leq R \leq 1000$ mm	-	-
XBBPX 45A180T20 XBBPX 45A180T20C	$5^\circ \leq a \leq 45^\circ$	$1000 < R \leq 2000$ mm	-	-
XBBPX 90A180T16 XBBPX 90A180T16C	$45^\circ < a \leq 90^\circ$	$1000 < R \leq 1600$ mm	-	-

**Plain bend, 30°**

Support rail on inner beam included

Plain bend, 30° X180X  
 R=500 mm  
 R=700 mm  
 R=1000 mm

**XBBPX 30A180R5**  
**XBBPX 30A180R7**  
**XBBPX 30A180R10**

Plain bend, 30° X180C  
 R=500 mm  
 R=700 mm  
 R=1000 mm

**XBBPX 30A180R5C**  
**XBBPX 30A180R7C**  
**XBBPX 30A180R10C**

**Plain bend, 45°**

Support rail on inner beam included

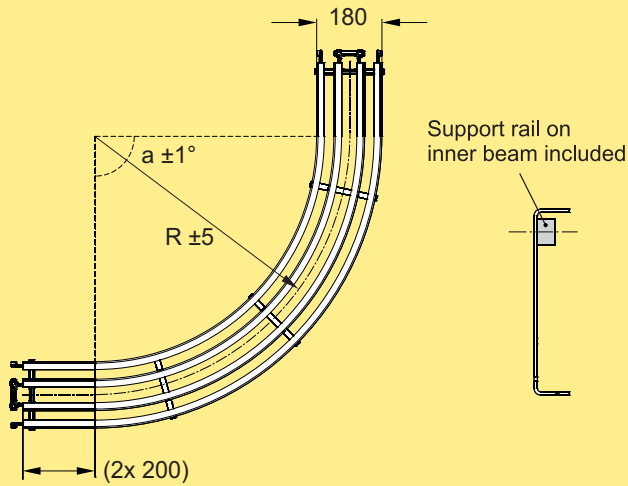
Plain bend, 45° X180X  
 R=500 mm  
 R=700 mm  
 R=1000 mm

**XBBPX 45A180R5**  
**XBBPX 45A180R7**  
**XBBPX 45A180R10**

Plain bend, 45° X180C  
 R=500 mm  
 R=700 mm  
 R=1000 mm

**XBBPX 45A180R5C**  
**XBBPX 45A180R7C**  
**XBBPX 45A180R10C**

### Plain bend, 90°



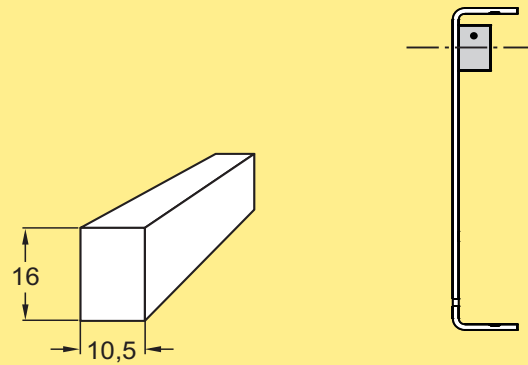
Plain bend, 90° X180X  
 R=500 mm  
 R=700 mm  
 R=1000 mm

**XBBPX 90A180R5**  
**XBBPX 90A180R7**  
**XBBPX 90A180R10**

Plain bend, 90° X180C  
 R=500 mm  
 R=700 mm  
 R=1000 mm

**XBBPX 90A180R5C**  
**XBBPX 90A180R7C**  
**XBBPX 90A180R10C**

### Support rail for plain bends (spare part)



Support rail for plain bends,  
 Length 2,4 m

**5048598**

Fix with sheet metal screw ISO 7049 4,2x9,5 or similar.

### Plain bends, 5° - 90°

Plain bend X180X, 5°-45°±1°  
 500 ≤ R ≤ 1000±5 mm  
 1000 < R ≤ 2000±5 mm

**XBBPX 45A180T10**  
**XBBPX 45A180T20**

Plain bend X180X, 46°-90°±1°  
 500 ≤ R ≤ 1000±5 mm  
 1000 < R ≤ 1600±5 mm

**XBBPX 90A180T10**  
**XBBPX 90A180T16**

Plain bend X180C, 5°-45°±1°  
 500 ≤ R ≤ 1000±5 mm  
 1000 < R ≤ 2000±5 mm

**XBBPX 45A180T10C**  
**XBBPX 45A180T20C**

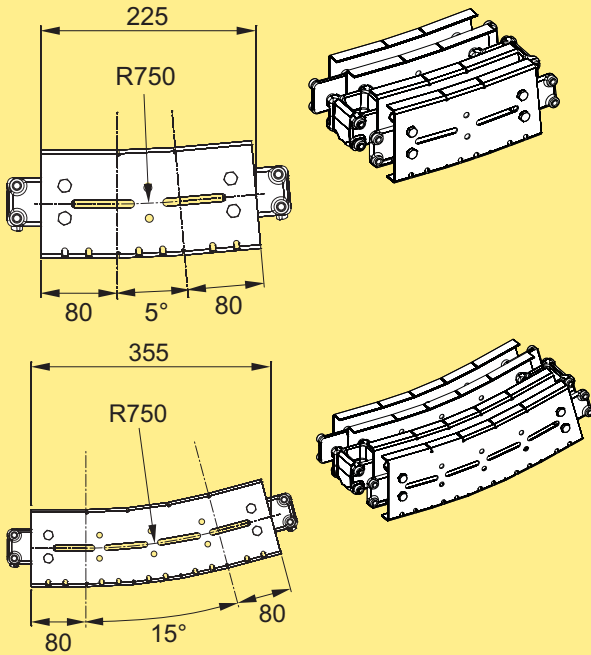
Plain bend X180C, 46°-90°±1°  
 500 ≤ R ≤ 1000±5 mm  
 1000 < R ≤ 1600±5 mm

**XBBPX 90A180T10C**  
**XBBPX 90A180T16C**

*Use online configurator when ordering.*

# Vertical bends

## Vertical bend, positive angle

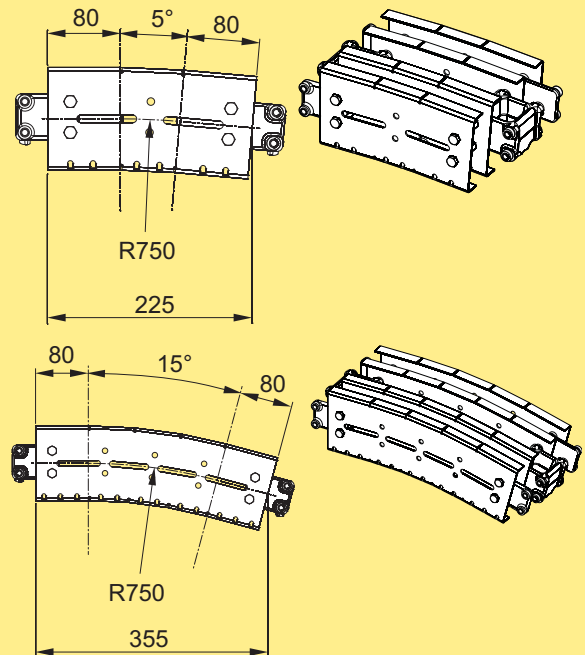


Vertical bend, pos., 5°  
Vertical bend, pos., 15°

**XBBVX 5A180R7P**  
**XBBVX 15A180R7P**

Effective track length (top + bottom): 5°: 0,50 m, 15°: 0,75 m

## Vertical bend, negative angle

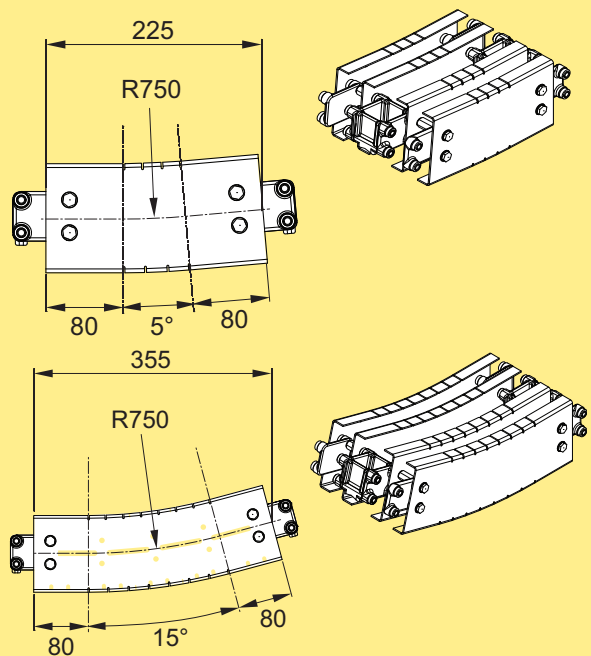


Vertical bend, neg., 5°  
Vertical bend, neg., 15°

**XBBVX 5A180R7N**  
**XBBVX 15A180R7N**

Effective track length (top + bottom): 5°: 0,5 m, 15°: 0,75 m

## Vertical bend, positive angle

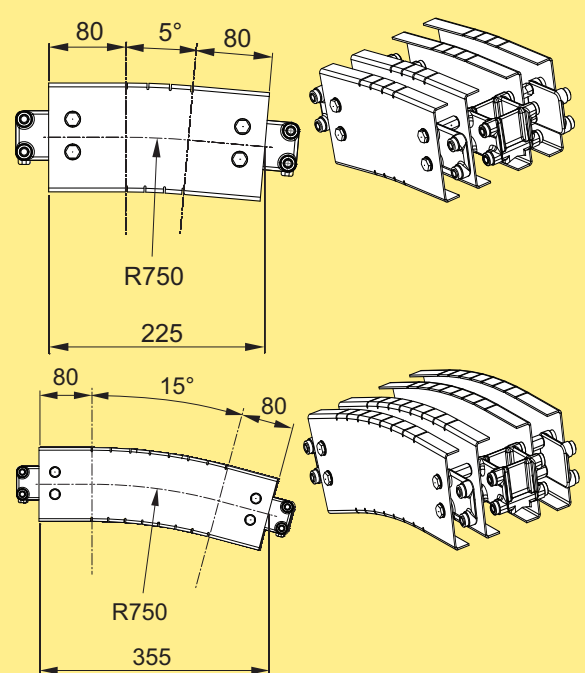


Vertical bend, pos., 5°  
Vertical bend, pos., 15°

**XBBVX 5A180R7PC**  
**XBBVX 15A180R7PC**

Effective track length (top + bottom): 5°: 0,50 m, 15°: 0,75 m

## Vertical bend, negative angle



Vertical bend, neg., 5°  
Vertical bend, neg., 15°

**XBBVX 5A180R7NC**  
**XBBVX 15A180R7NC**

Effective track length (top + bottom): 5°: 0,5 m, 15°: 0,75 m

P0  
X70X  
X85X  
X180X  
X300X  
WL 222X  
WL 273X  
WL 374X  
WL 526X  
WL 678X  
CSX  
GRX  
FSTX  
TR  
APX  
IDX

