



**FlexLink**<sup>®</sup>

# Power box

5113441-01

User documentation

# Power box

---

## Power supply

Voltage: 400 V<sub>AC</sub> (Controlled)  
Phases: 3  
Frequency: 50 Hz  
Current: 0.5 A

# Junction box

---

## CE marking location

The CE marking is located on the outside of the door, in the upper left corner.

## Electricians

Electricians must have:

- Experience from similar installations
- Sufficient knowledge to work from drawings and wiring diagrams
- Knowledge of local safety regulations for electrical power and automation
- Knowledge in english language

To avoid risks, only experienced personnel with technical knowledge and experience may perform repair work on the machine's electronics components.

## Application of usage

The Power box is to be used for controlling FlexLink Guide units as a complement to the FlexLink Control box in a AGS-system. which fixed installation according to 2004/108/EC Electromagnetic Compatibility Directive (EMC).

The Power box must be controlled/powered by a FlexLink Control box.

The Power box should not be used for any other purpose than controlling FlexLink Guide rails.

The installation must be regarded as a fixed installation according to 2004/108/EC Electromagnetic Compatibility Directive (EMC).

## Safety

The voltage in the box is 400V for Europe or 480V for US. Ensure that the box is closed and locked after working in the box.

The box can only be opened using a tool.

- Only authorised personnel may open electrical units.
- Incorrect use of the equipment can cause personal injury.
- Do not stand or climb on the equipment.
- Only use recommended spare parts.
- Before working in the box, the main switch must be turned off and locked.

## Assembly

The box is equipped with two aluminium beams on the backside to facilitate mechanical assembly.

## Installation

The incoming power, supplied by the FlexLink Control box, should be connected to terminal group X30101. Protective earth should be connected to PE terminal.

Note: The phases of the power supply are controlled by the Control box, shifting the rotation direction and starting the motors inside Guide units.

Electrical supply data, Europe-version:

Voltage: Controlled 400 VAC  
Phases: 3  
Frequency: 50 Hz  
Current: 0.5 A

Electrical supply data, US-version:

Voltage: Controlled 460-480 VAC  
Phases: 3  
Frequency: 60 Hz  
Current: 0.5 A

Connect the Guide unit's included cable to connector X31103 or X31104.

---

**FlexLink Components AB**  
**SE-41550 Göteborg**  
**Sweden**

declares that the following product(s) is in line with the essential requirements of the below directive(s)

- **AGS Power box 5113441**

**Corresponding EC directives:**

Low Voltage Directive 2006/95/EC

According to 2004/108/EC Electromagnetic Compatibility Directive (EMC), the listed device is not independently operable product, but intended as part of a given fixed installation. Compliance of the directive requires the correct installation of the product, the observance of specific installation notes and product documentation.

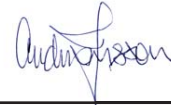
FlexLink Components AB

A handwritten signature in blue ink, appearing to read 'Svante Anderholm'.

---

**Svante Anderholm**  
Chief Operating Officer

Flexlink Components AB

A handwritten signature in blue ink, appearing to read 'Anders Jonsson'.

---

**Anders Jonsson**  
Responsible Technical file

---

**FlexLink Components AB**

Telephone: +46-31-337 31 00  
Fax: +46-31-337 22 33  
www.flexlink.com

SE-415 50 Göteborg  
Sweden

8

7

6

5

4

3

2

1

LIST OF SHEETS

100 List of sheets

Layouts:

- 101 Layout Exterior
- 102 Layout Interior

Circuit diagrams:

301 Branch supply

External connections:

511 Branch supply

A

B

C

D

E

Nr. Date Sign Change

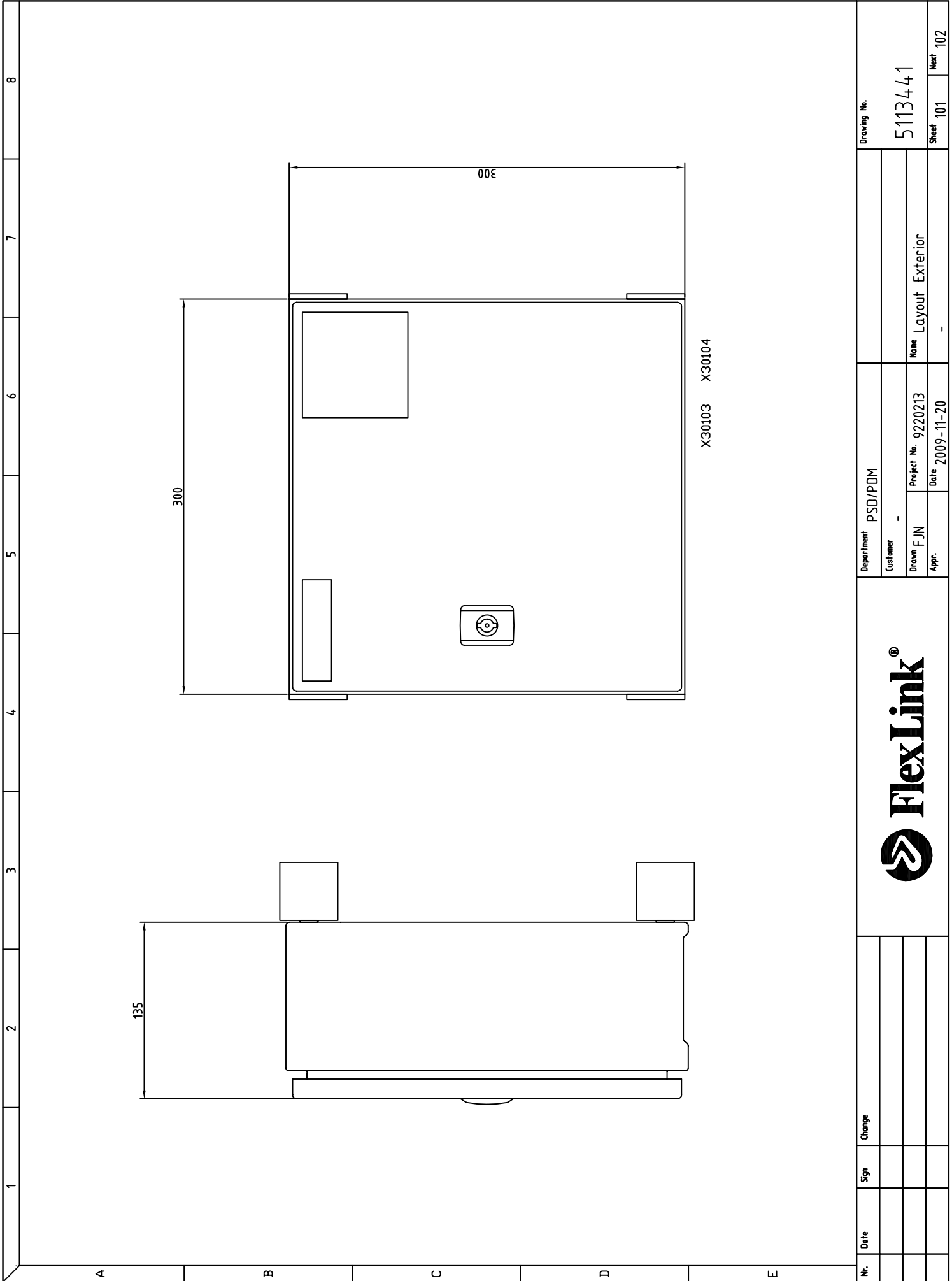



Department PSD/PDM  
 Customer -  
 Drawn F.JN  
 Appr. -

Project No. 9220213  
 Date 2009-11-23

Name List of sheets  
 -

Drawing No. 5113441  
 Sheet 100 Next 101

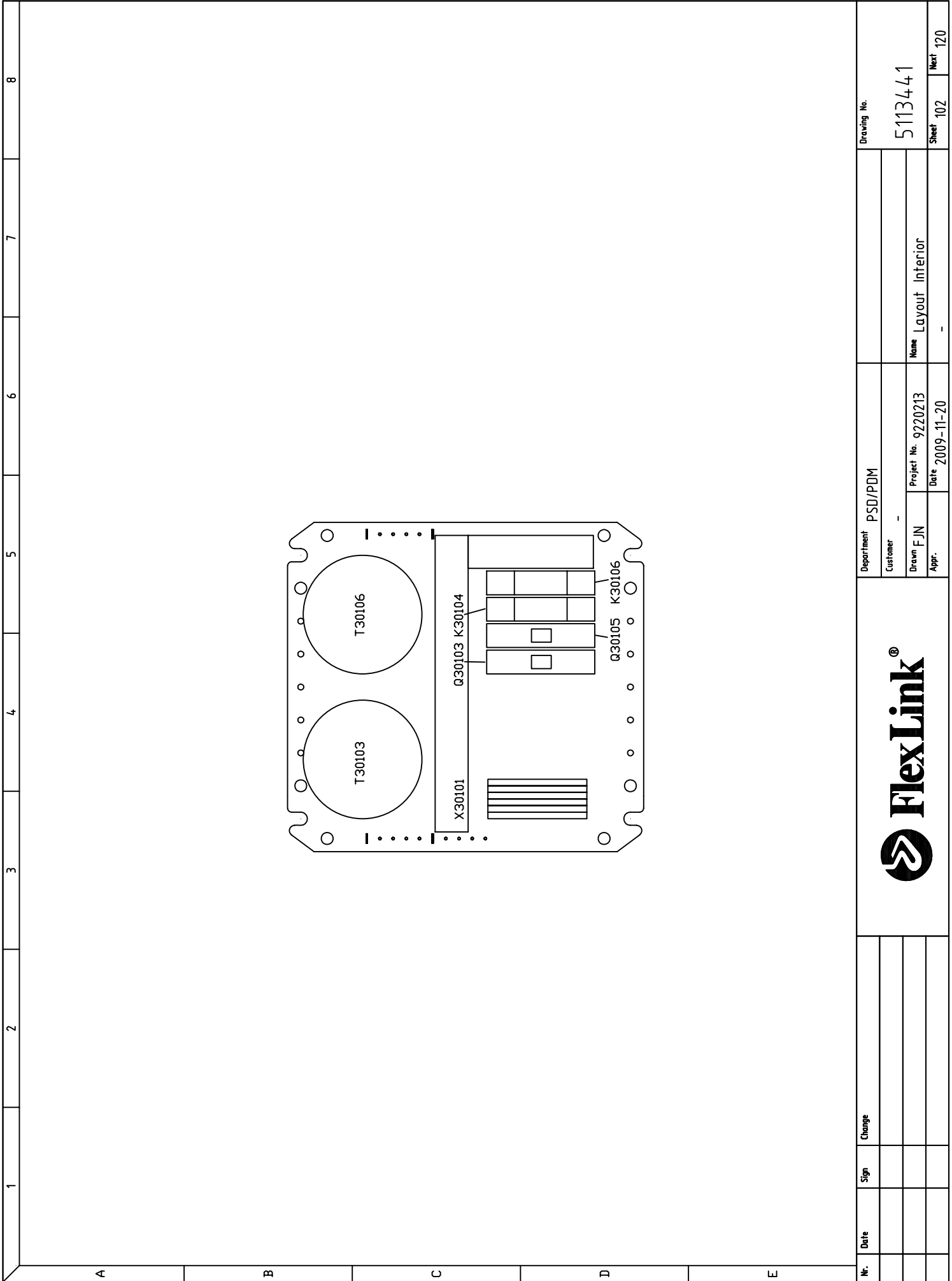


X30103 X30104

Demna rithing Er Flexlink egsendom. Skyddad enligt gällande lag.  
 This drawing is the property of Flexlink. Protected in accordance with prevailing law.

Nr.	Date	Sign	Change	Department PSD/PDM		Drawing No.	
				Customer -	Customer -	5113441	Next 102
				Drawn F.JN	Project No. 9220213	Name Layout Exterior	Sheet 101
				Appr.	Date 2009-11-20	-	Next 102





Denna ritning är Flexlinks egendom. Skyddad enligt gällande lag.  
 This drawing is the property of Flexlink. Protected in accordance with prevailing law.



1

2

3

4

5

6

7

8

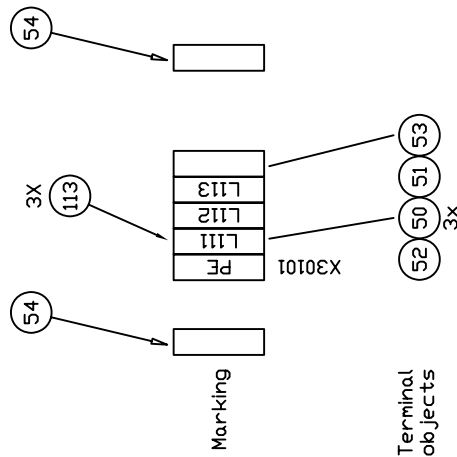
A

B

C

D

E



400VAC

Denna ritning är Flexlink egendom. Skyddad enligt gällande lag.  
 This drawing is the property of Flexlink. Protected in  
 accordance with prevailing law.

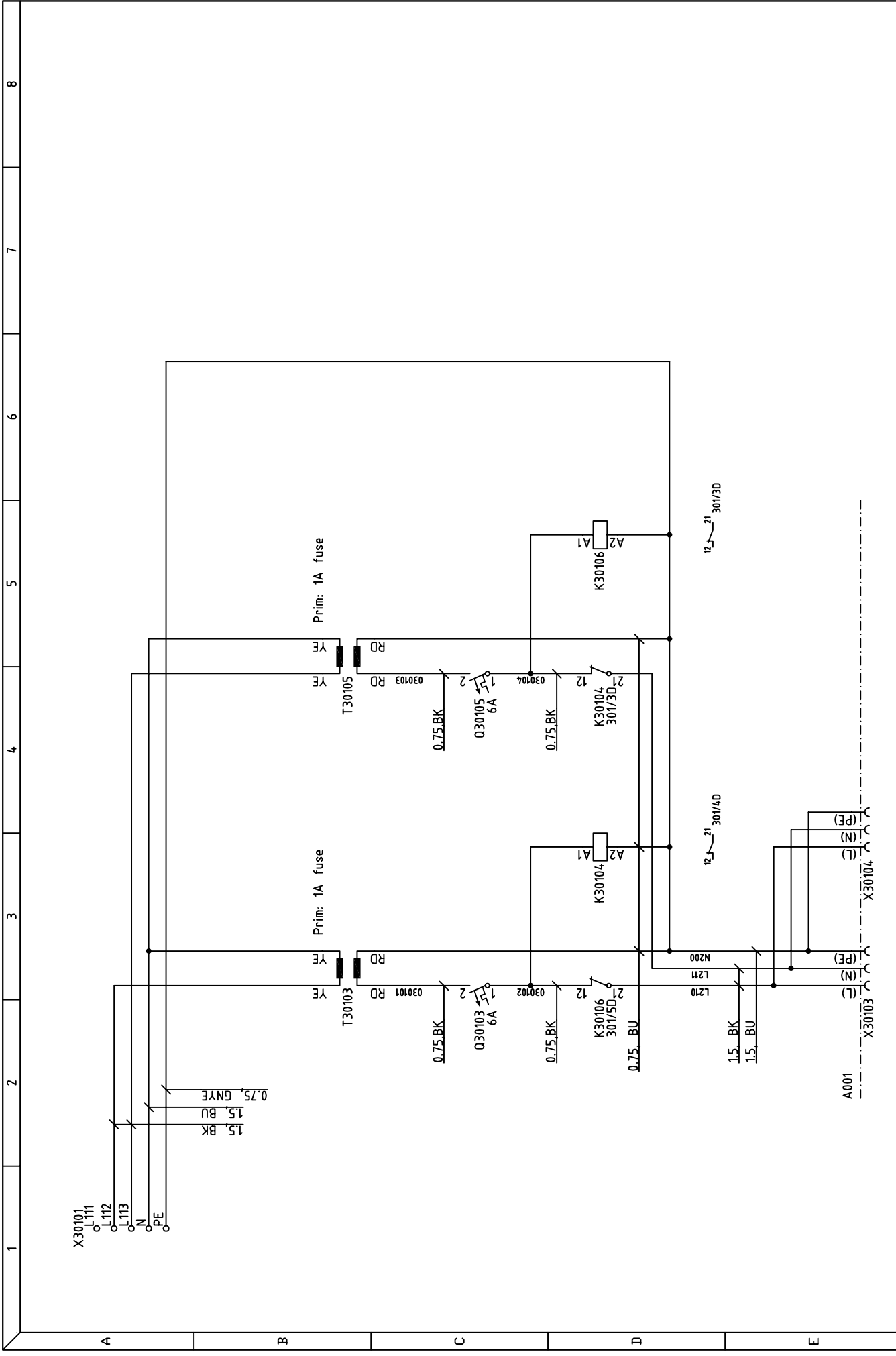
Nr.	Date	Sign	Change

Department	PSD/PDM	Drawing No.	5113441
Customer	-	Project No.	9220213
Drawn	FJN	Name	Terminal
Appr.	-	Date	2010-03-12
		Sheet	120
		Next	301







Demna rīnning Er Flexlink eģendoms. Snyddad enligt gällande lag.  
 This drawing is the property of Flexlink. Protected in accordance with prevailing law.

Nr.	Date	Sign	Change

<b>FlexLink®</b>		Department	PSD/PDM
		Customer	-
Drawn	F.J.N	Project No.	9220213
Appr.	-	Date	2009-11-20
		Name	Branch supply
		Drawing No.	5113441
		Sheet	301
		Next	511

1 2 3 4 5 6 7 8

A B C D E

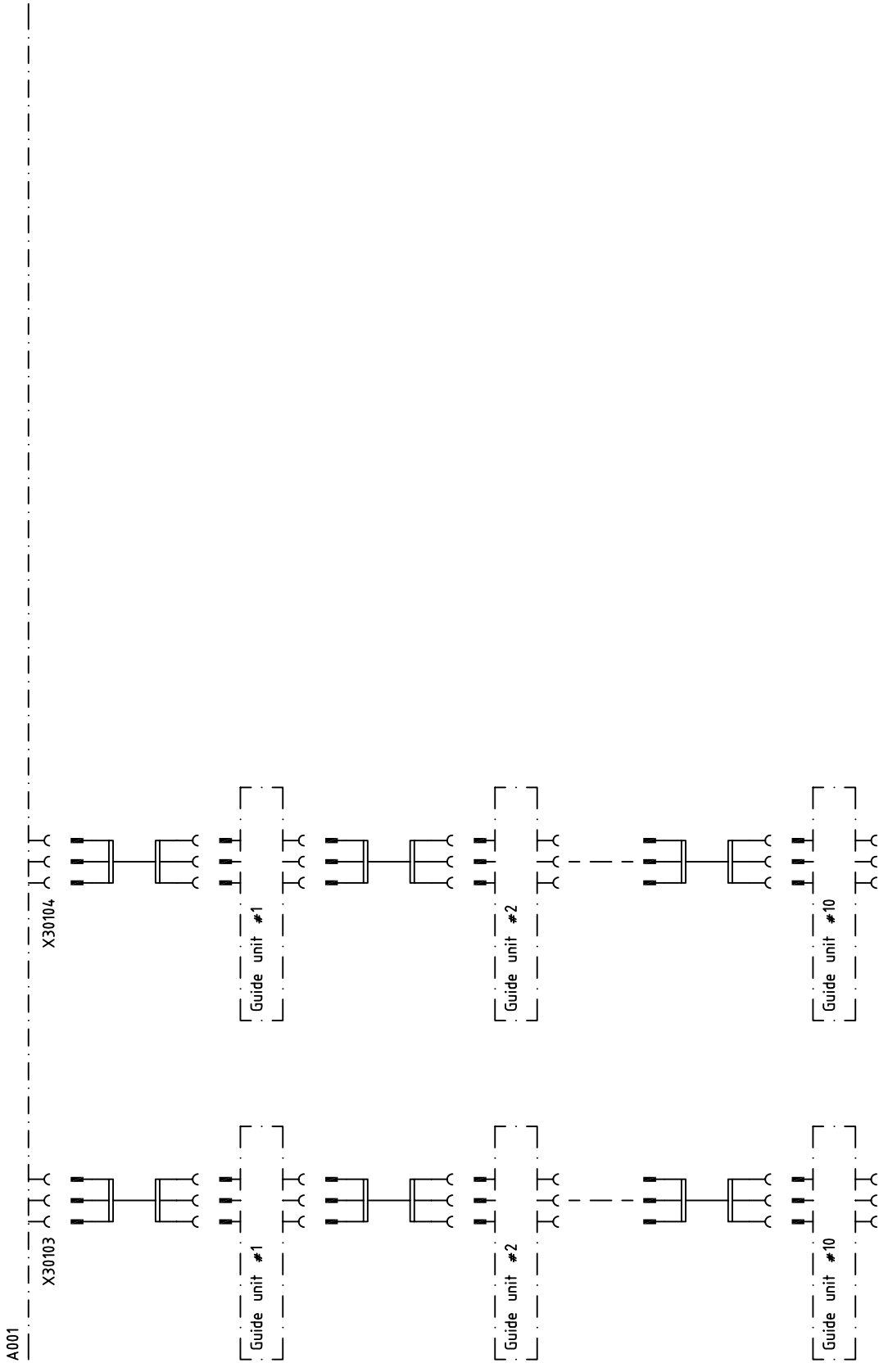
A

B


C

D

E



Denna ritning är Flexlink egendom. Skyddad enligt gällande lag.  
 This drawing is the property of Flexlink. Protected in  
 accordance with prevailing law.

Nr.	Date	Sign	Change		Department	PSD/PDM		Drawing No.	5113441		
					Customer	-			Sheet	511	
					Drawn	F.JN	Project No.	9220213	Name	Branch supply	
					Appr.		Date	2009-11-20		Next	-

**Spare parts list Power box 5113441**

Pos	Des	Name	Manufacturer	Manufacturer item nr	Qty	Comment
Q30103		Miniature circuit breaker	Merlin Gerin	C60N 1P C6A		
Q30105		Miniature circuit breaker	Merlin Gerin	C60N 1P C6A		
T30103		Transformer	FlexLink	5058593		
T30103		Fuse	Littlefuse	1A, 5x20mm		
T30105		Transformer	FlexLink	5058593		
T30105		Fuse	Littlefuse	1A, 5x20mm		
K30104		Relay	Finder	40.51.8.024		
K30104		Relay socket	Finder	95.05.SMA		
K30106		Relay	Finder	40.51.8.024		
K30106		Relay socket	Finder	95.05.SMA		
X30103		Connector	Wieland	96.031.1053.1		
X30104		Connector	Wieland	96.031.1053.1		