

Stainless steel conveyor system X300X, X300Y, X300C

Contents

System information.....	79	Drive units – configuration strings	86
Conveyor chain	80	End drive units	87
Chain accessories	80	Idler unit.....	89
Conveyor beams	81	Drip catcher.....	90
Slide rails	83	Bridges.....	91
Tools for conveyor beam.....	84	Plain bends.....	92
Drive and idler units – Introduction.....	85	Vertical bends.....	94

System information



PO
X70X
X85X
X180X
X300X
WL
222X

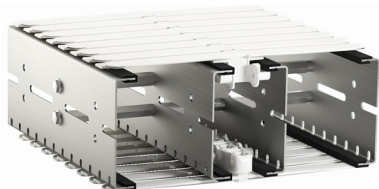
Conveyor with focus on robustness and cleanliness

X300X - Standard version: Designed to suit the requirements of food and packaging applications.

X300Y - Covered return chain version: Designed with self-drainage to avoid malfunction of the chain in case of machine spillage.

X300C - Wipe off version: Closed surface design with minimum holes or slots for easier cleaning and even better hygiene.

Chain width 295 mm



X300X

Environment

- Operating temperatures –20 °C to +60 °C
- Operating humidity 10% to 95% RH
- See chapter Technical reference for Noise level

Improved cleanliness conveyor

The X300X conveyor system has been evaluated based on field experience and suggestions from customers. With focus on structure rigidness and robustness, easy design, and easier cleaning, several components have been improved with features like better drainage and smaller contact surfaces.

Technical characteristics

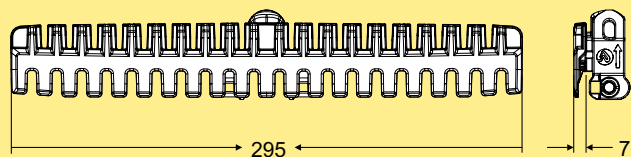
Drive unit capacity	1250 N
Chain tension limit	1250 N
Beam width	300 mm
Chain width	295 mm
Chain pitch.....	33,5 mm
Item width	70–400 mm
Maximum item weight.....	15 kg
Maximum weight on conveyor	200 kg
Maximum conveyor length.....	30 m

WL
273X
WL
374X
WL
526X
WL
678X
CSX
GRX
FSTX
TR

APX
IDX

Conveyor chain

Plain chain



Plain chain
Length 3 m

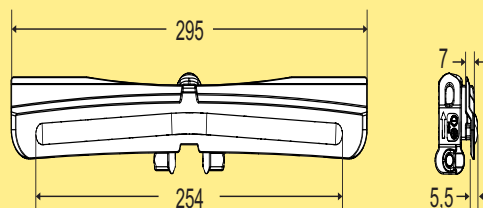
XBTPX 3A300 K

Plain link kit *

FLX1003735

* Link kit contains 10 links, 10 pivots, 10 steel pins

Friction top chain



Friction top chain
Length 3 m

XBTP 3A295 F

Use the online configurator to specify and order.

Friction top link kit
Kit with 10 links *

5054874

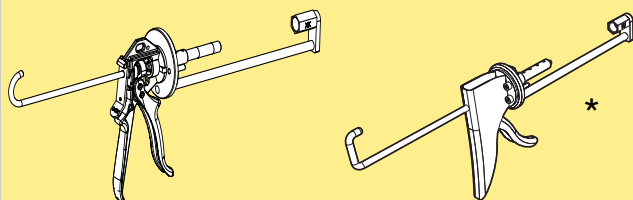
*Note. Links are delivered as a kit containing 10 links and the necessary steel pins and plastic pivots.

Other chains

See the Chain guide for selection of other chains.

Chain accessories

Pin insertion tool for chain

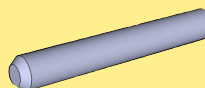


Pin insertion tool
X85-X180/X300
X85-X180/X300-XH, PRO version*

XMMJ 6
XBMJ 6 P

*This tool is recommended for frequent users

Stainless steel pin

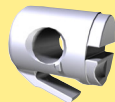


Steel pin
Stainless steel

5111172

Steel pin kit, contains 25 pcs.

Plastic pivot for chain



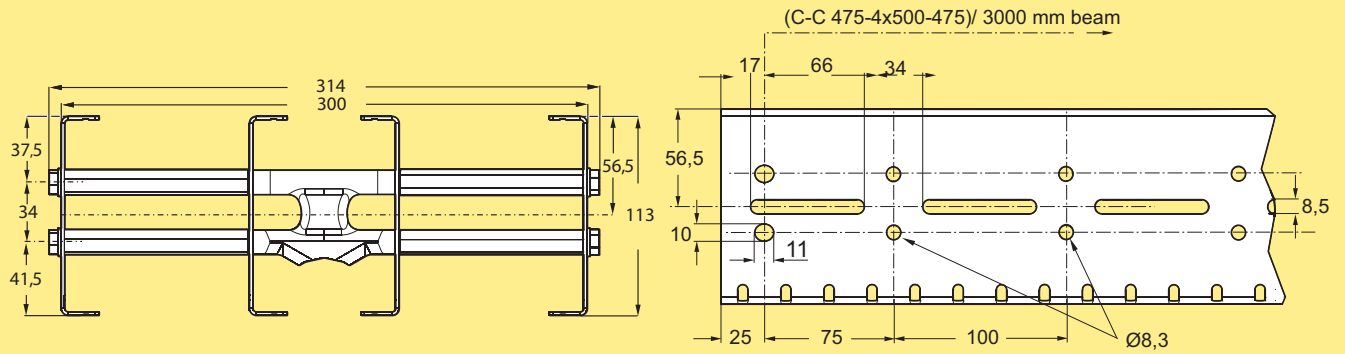
Plastic pivot kit

5111169

Spare parts kit, contains 25 pcs.

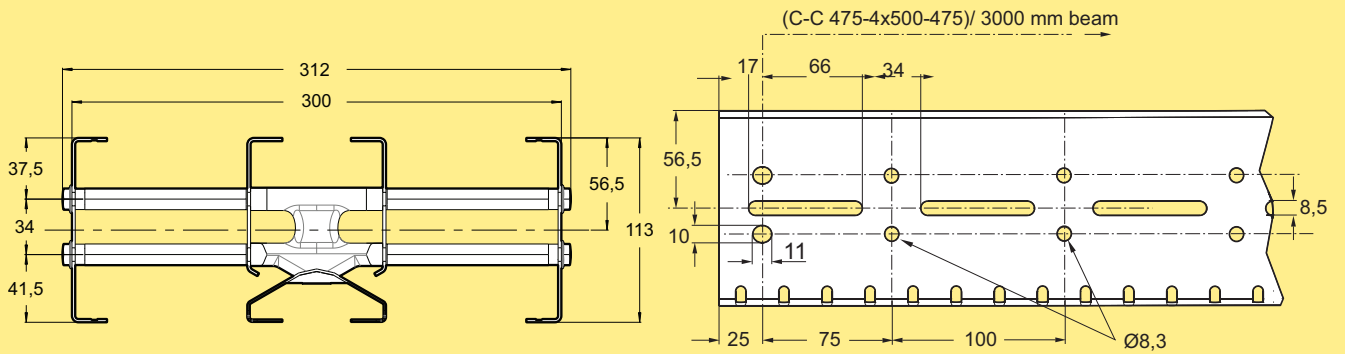
Conveyor beams

Conveyor beam, 300 mm



Conveyor Beam
 Length 3 m (3000 ±1,5 mm) **XBCBX 3A300**
 Length to order (150- 2999 mm) **XBCBX LA300**
 All X300X beams are delivered fully assembled.

Conveyor beam type Y, 300 mm



Conveyor Beam
 Length 3 m (3000 ±1,5 mm) **XBCBX 3A300Y**
 Length to order (150- 2999 mm) **XBCBX LA300Y**
 All X300X beams are delivered fully assembled.
 Screw Kit 5114562 included

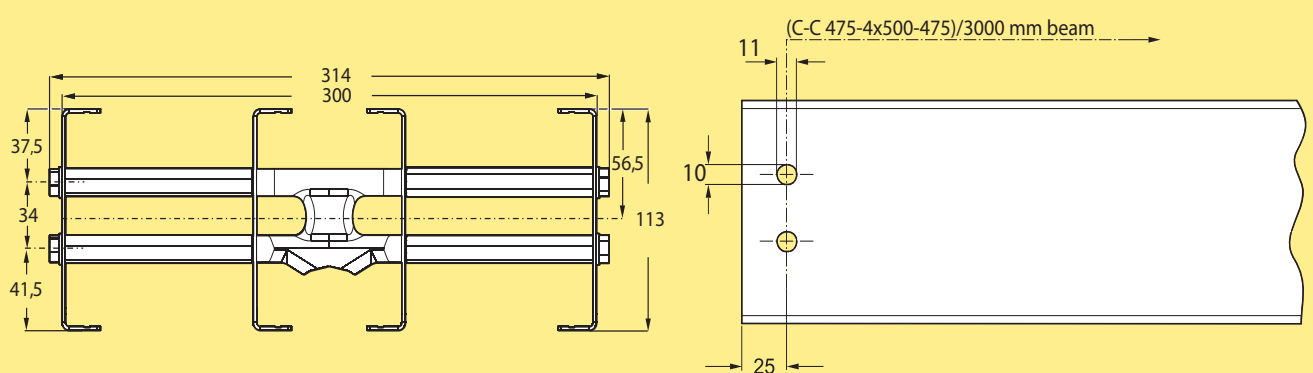
PO
 X70X
 X85X
 X180X
X300X

WL
 222X

WL
 273X

WL
 374X

Conveyor beam, 300 mm



Conveyor Beam
 Length 3 m (3000 ±1,5 mm) **XBCBX 3A300C**
 Length to order (150- 2999 mm) **XBCBX LA300C**
 All X300C beams are delivered fully assembled.

WL
 526X

WL
 678X

CSX

GRX

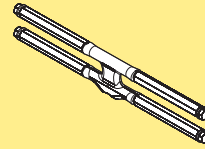
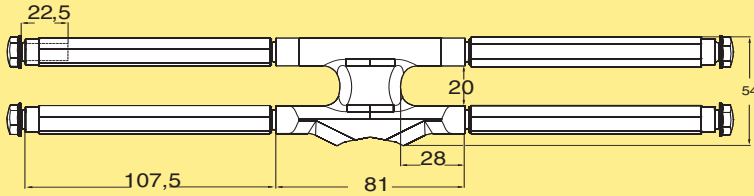
FSTX

TR

APX

IDX

Beam spacer kit



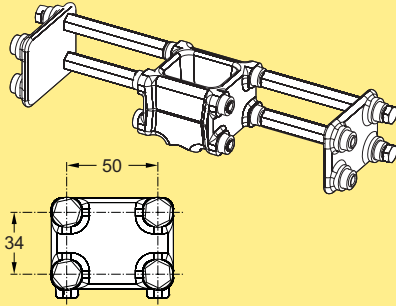
Beam spacer kit, Stainless steel
Beam spacer kit for X300X

XBCEX A300

Including screws.

Additional beam stiffness can be obtained by using additional beam brackets. The beams have predrilled 8,3 mm holes at 100 mm intervals that need to be increased to 10 mm.

Connecting bracket kit



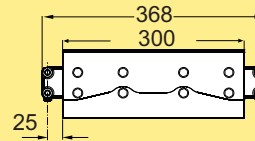
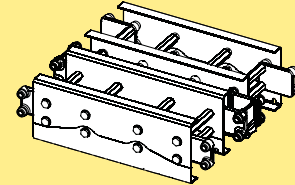
Connecting bracket kit
Stainless steel

Connecting bracket kit for X300X **XBCJX A300**

Including screws.

The beams have predrilled 10 mm holes, see XBCBX 3A85.

Beam section for chain installation

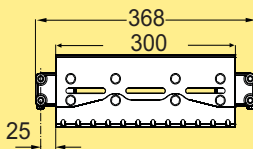
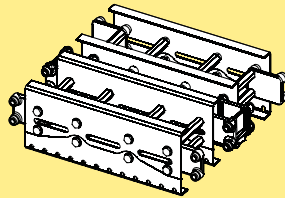


Beam section for chain installation.

Including 2 Connecting bracket kit XBCJX A300

XBCCX 300A300C

Beam section for chain installation



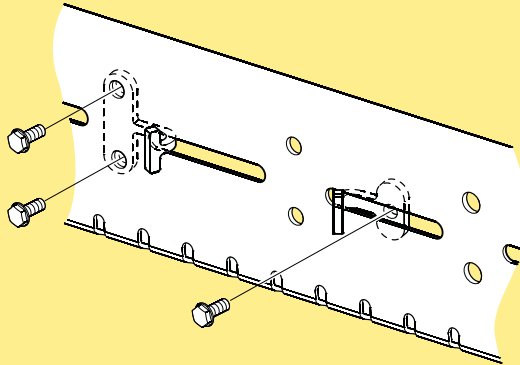
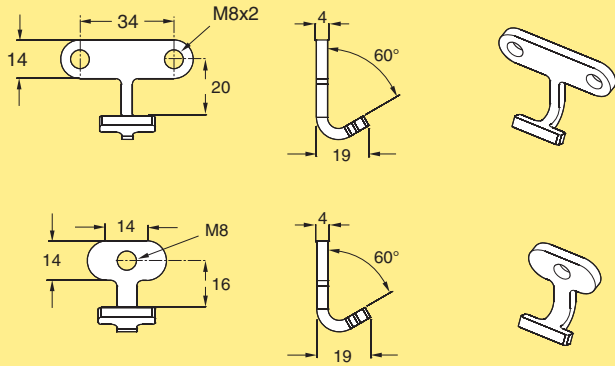
Beam section for chain installation.

Including 2 Connecting bracket kit XBCJX A300

XBCCX 300A300

Slide rails

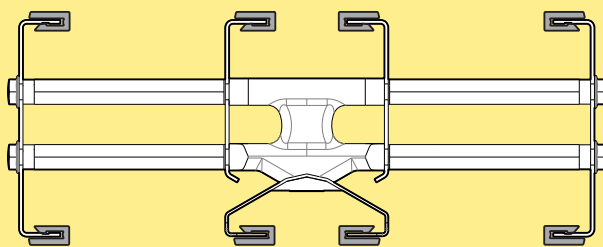
Nut, stainless steel



Nut M8x2
Nut M8x1

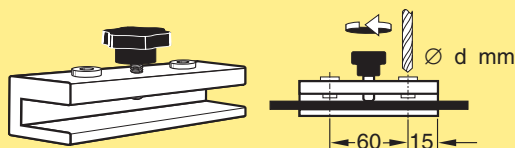
5113998
5114181

Nut with threaded hole (M8) for connection of sensors and other accessories when the conveyor chain is in place. By placing nuts inside the beam at the holes, accessories can be attached using M8 A4 screws. NOTE! Be careful when installing so no nut is dropped inside the beam, this can lead to a large additional work or operational damage.



Note. Always use 8 slide rails

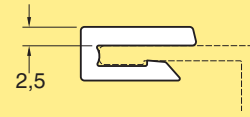
Drill fixture for slide rail



Drill fixture for slide rail
d=4,2 mm

3920500

Plastic slide rails, narrow

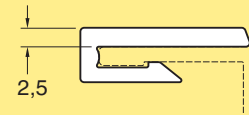


Slide rail

Length 25 m
HDPE (Black)
PE-UHMV (White)
PE-UHMW (Blue)
PVDF (Transparent white)
PA-PE (Grey) (Should not be used in wet applications)

XBCR 25
XBCR 25 U
XBCR 25 UL A
XBCR 25 P
XBCR 25 H

Plastic slide rails, wide



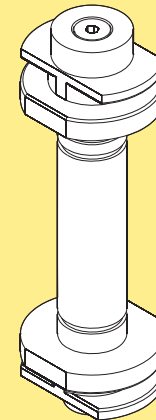
Slide rail

Length 25 m
HDPE (Black)
PE-UHMV (White)
PVDF (Transparent white)
PA-PE (Grey) (Should not be used in wet applications)

XBCR 25 B
XBCR 25 UB
XBCR 25 PB
XBCR 25 HB

Note. The wide slide rails are not suitable for use in bends.

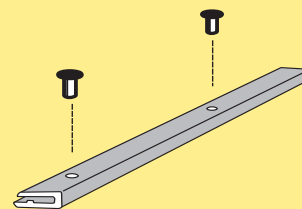
Mounting tool for slide rail



Mounting tool for slide rail

XBMR 170

Stainless steel rivet



Stainless steel rivet, 4 mm

XLAHX 4x7

Note. Contains 25 pcs.

PO
X70X
X85X
X180X

X300X

WL
222X

WL
273X

WL
374X

WL
526X

WL
678X

CSX

GRX

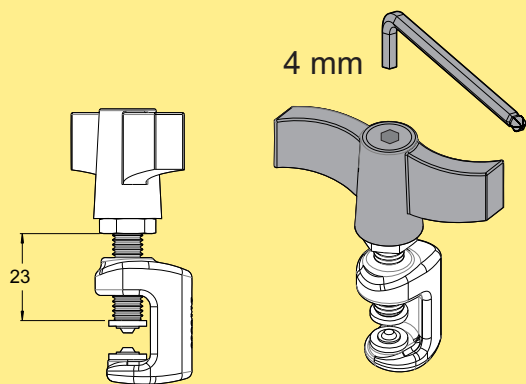
FSTX

TR

APX

IDX

Rivet crimping clamp



Rivet crimping clamp
For 4 mm rivets
(note: Allen key not included)

3923005

Rivet crimping pliers

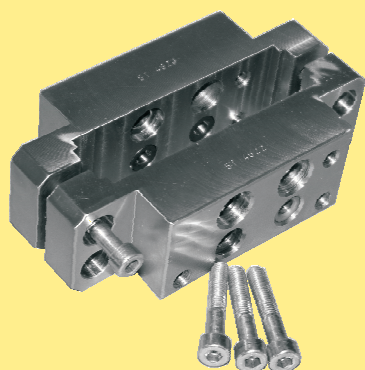


Rivet crimping pliers
For 4 mm rivets

5051395

Tools for conveyor beam

Drill fixture



Drill fixture

5114621

For use when additional holes are needed on the beam sides.

Including:

Drill 4,5 mm

Drill 8,3 mm

Drill 11,0 mm

and instructions for use.

Drill



Twist Drills DIN 338 HSS-E (Co 8)
Type N-HD Cobalt Alloyed, Split Point

Drill 11,0 mm

5115050

Drill 10,2 mm

5115056

Drill 8,3 mm

5115051

Drill 4,5 mm

5115052

Drill 4,2 mm (for 3920500)

5115053

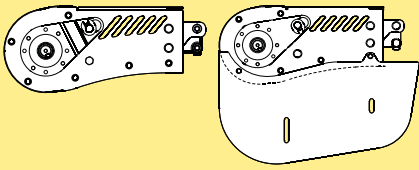
For high strength alloys on CrNi base such as Hastelloy, Inconel, Monel, Nimonic, stainless steels, head and acid-proof steels (up to 1400 N/mm² tensile strength).

Drive unit types

The X300X system drive unit capacities is maximum 1250 N. The actual capacity depends on the speed.

Available motors include variable speed types (**V**) as well as fixed speed motors (**F**).

End drive units

Size	Direct drive, no slip clutch
	
Drive unit	F, V
Drive unit, guided	F, V

Motor specifications

Motors are available for 230/400 V, 50 Hz and 230/460 V, 60 Hz. Variable speed motors are SEW Movimot, 380–500 V. Note that variable speed motors include a control box that adds 120 mm to the width of the motor.

IP55 available with standard oil.

IP65 available with food grade oil.

Idler unit types

Idler units are available in two versions, Compact and Standard.

Ordering information

Drive units with motors must be specified using the web-based configurator. The configurator provides detailed information and step-by-step guidance in the specification process. A product code string is generated, containing the specification details. See next page for examples of code strings.

Drive units *without* motors can be ordered using the designations in the catalogue.

Dimension

Note that dimensions relating to drive unit motors depend on the motor specified during the configuration.

PO

X70X

X85X

X180X

X300X

WL
222X

WL
273X

WL
374X

WL
526X

WL
678X

CSX

GRX

FSTX

TR

APX

IDX

Drive units – configuration strings

Below, two examples of text strings obtained from the configurator with explanations are presented.

Drive unit with fixed speed motor

Item no	A	B	C	D	E	G	H	I
XBEBX A300	HNP	- L	- G	- V4	- SA37	- 50/230	- 0,18kW	- TF

Drive unit with variable speed motor

Item no	A	B	D	E	F	G	J	K
XBEBX A300	HNPV	- L	- V6-15	- SA37	- MM03	- 50/380-500	- C	- P

Item no - Drive type

XBEBX: End drive

A – 0-Unit

HNP: Heavy, direct drive, no slip clutch
...V: Variable speed

B – Motor position

L: Left
R: Right

C – End drive with guided chain

G: Guided (position is omitted for non-guided)

D – Speed

V...: Fixed speed... m/min
V... -...: Variable speed range...-... m/min

E – Gearbox

SA37: SEW motor type SA37
WA30: SEW gear box type WA30

F – Movimot size

MM03: SEW Movimot type, 0,37 kW
MM05: SEW Movimot type, 0,55 kW
MM07: SEW Movimot type, 0,75 kW
MM11: SEW Movimot type, 1,1 kW
(position is omitted for fixed speed motors)

G – Electrical environment

50/230: 50 Hz, 230 V
50/400: 50 Hz, 400 V
60/230: 60 Hz, 230 V
60/460: 60 Hz, 460 V
50/380-500: SEW Movimot variable speed motor

H – Motor power

... kW: Motor power, kW
(position is omitted for variable speed motors
see position F)

I – Thermal protection

No: No thermal protection
TF: Thermal protection type TF
TH: Thermal protection type TH
(position is omitted for variable speed motors)

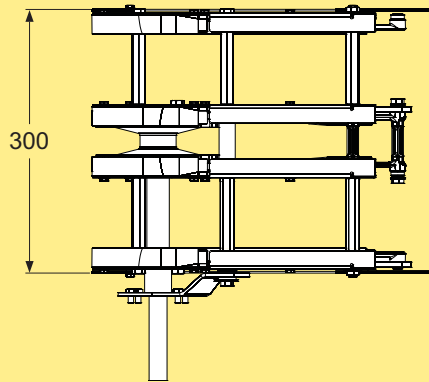
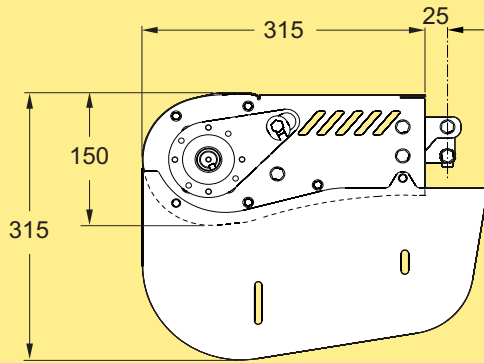
J – Hybrid cable

No: No hybrid cable
C: Hybrid cable included in SEW Movimot
(position is omitted for fixed speed motors)

K – Fieldbus

No: No fieldbus
P: Profibus fieldbus, maintenance switch
D: DeviceNet fieldbus, maintenance switch
(position is omitted for fixed speed motors)

End drive unit, direct drive, no slip clutch



End drive unit
 Direct drive. No slip clutch.
 Maximum traction force: up to 1250 N.
 Maximum speed 80 m/min for X300X.

Motor on left side:

Fixed/variable speed * **XBEBX A300**
 Without motor **XBEBX0A300HNL P**

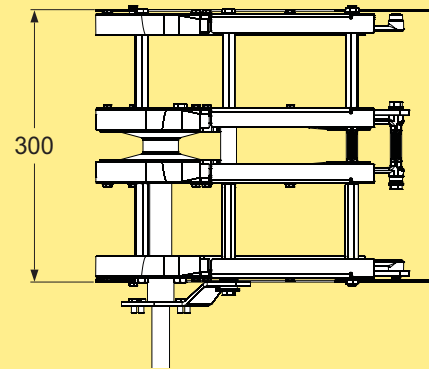
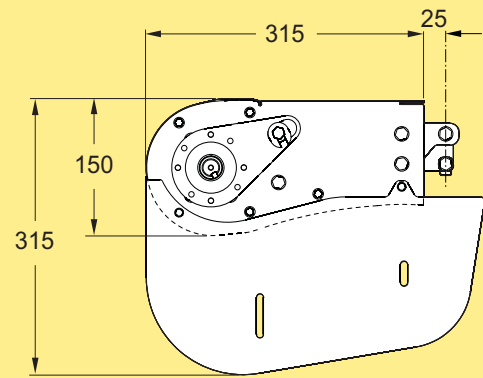
Motor on right side (not shown):

Fixed/variable speed * **XBEBX A300**
 Without motor **XBEBX0A300HNR P**

* Use online configurator when ordering.

Effective track length: 0,80 m

End drive unit, direct drive, no slip clutch



End drive unit
 Direct drive. No slip clutch.
 Maximum traction force: up to 1250 N.
 Maximum speed 80 m/min for X300X.

Motor on left side:

Fixed/variable speed * **XBEBX A300C**
 Without motor **XBEBX0300HNL PC**

Motor on right side (not shown):

Fixed/variable speed * **XBEBX A300C**
 Without motor **XBEBX0A300HNR PC**

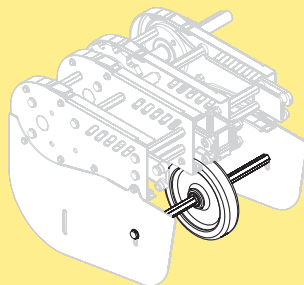
* Use online configurator when ordering.

Effective track length: 0,80 m

PO
 X70X
 X85X
 X180X
X300X
 WL
 222X
 WL
 273X
 WL
 374X
 WL
 526X

WL
 678X
 CSX
 GRX
 FSTX
 TR
 APX
 IDX

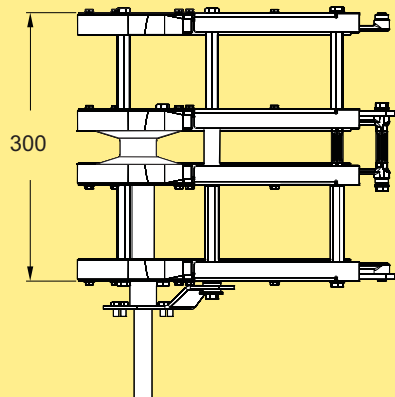
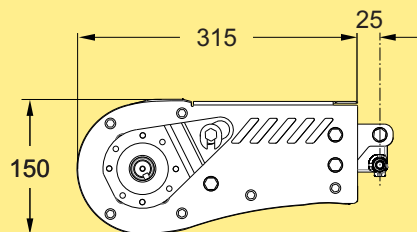
Guide wheel kit 300



Guide wheel for drive units **5114930**

Including wheel, shaft and mounting hardware.
 Note. Can only be used with plain chain. For use in high speed operation (60 m/min and above).

End drive unit, guided chain, no slip clutch



End drive unit

Direct drive with guided chain. No slip clutch.
 Maximum traction force: up to 1250 N.
 Maximum speed 80 m/min for X300X.

Motor on left side:

Fixed/variable speed * **XBEBX A300**
 Without motor **XBEBX0A300HNLGP**

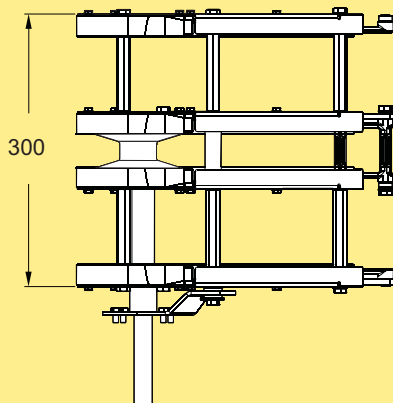
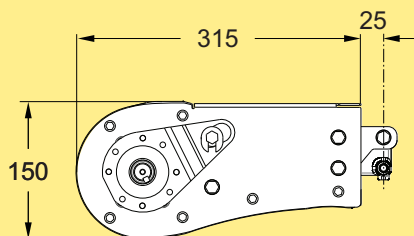
Motor on right side (not shown):

Fixed/variable speed * **XBEBX A300**
 Without motor **XBEBX0A300HNRGP**

* Use online configurator when ordering.

Effective track length: 0,80 m

End drive unit, guided chain, no slip clutch



End drive unit

Direct drive with guided chain. No slip clutch.
 Maximum traction force: up to 1250 N.
 Maximum speed 80 m/min for X300X.

Motor on left side:

Fixed/variable speed * **XBEBX A300C**
 Without motor **XBEBX0A300HNLGPC**

Motor on right side (not shown):

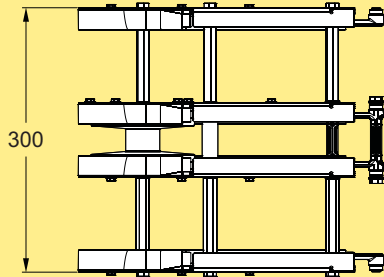
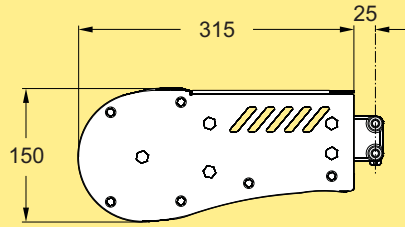
Fixed/variable speed * **XBEBX A300C**
 Without motor **XBEBX0A300HNRGPC**

* Use online configurator when ordering.

Effective track length: 0,80 m

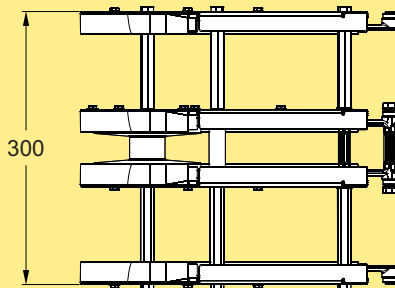
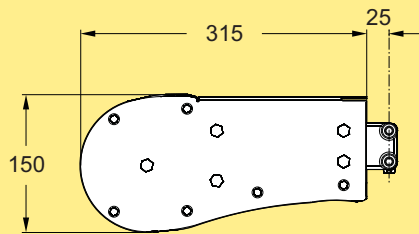
Idler unit

Idler end unit



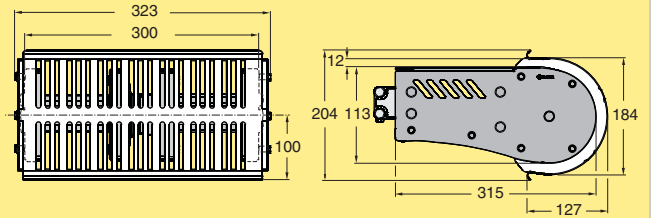
Idler end unit X300X **XBEJX A300**
Effective track length: 0,70 m.

Idler end unit



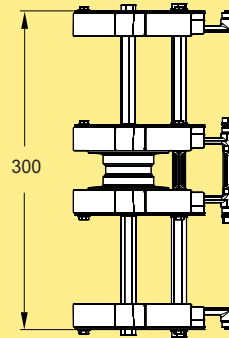
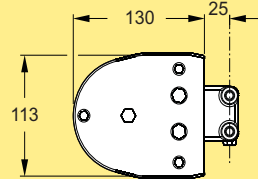
Idler end unit X300C **XBEJX A300C**
Effective track length: 0,70 m.

Protective cover for Idler end



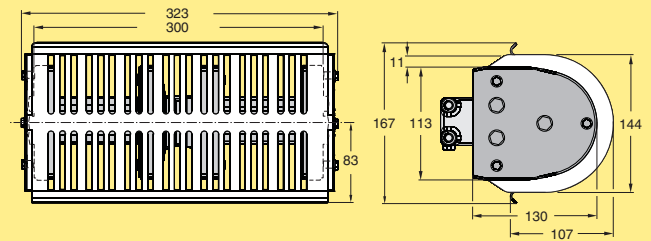
Protective cover for Idler end unit XBEJX A300 **XBSJX A300**

Idler end unit, Compact



Idler end unit X300X **XBEJX A300 S**
Effective track length: 0,35 m.

Protective cover for Idler end, Compact



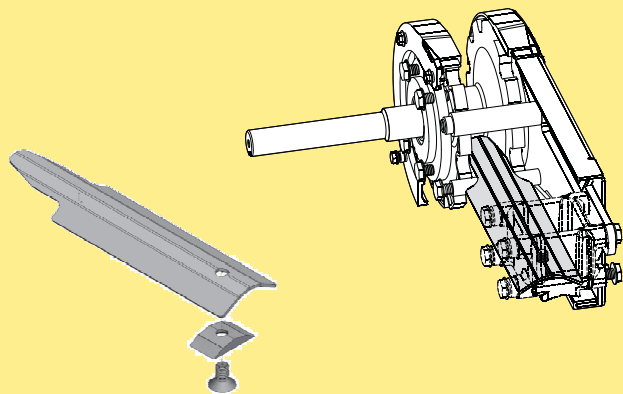
Protective cover for Idler end unit XBEJX A300 S **XBSJX A300 S**

Note!
Always use protective cover for Idler ends to protect persons from clamp risk.

- PO
- X70X
- X85X
- X180X
- X300X**
- WL 222X
- WL 273X
- WL 374X
- WL 526X
- WL 678X
- CSX
- GRX
- FSTX
- TR
- APX
- IDX

Drip catcher

Drip catcher kit

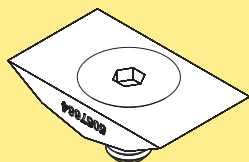


Drip catcher kit

5114763

For drive units and idler ends, to be used together with conveyor beams type Y with protected return beams including 5114562 Screw kit.

Screw kit



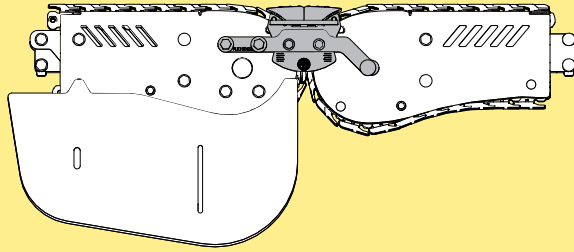
Screw kit

5114562

For return beam, type Y, 85 mm, or Drip catcher kit.

Bridges

Passive bridge from conveyor to conveyor

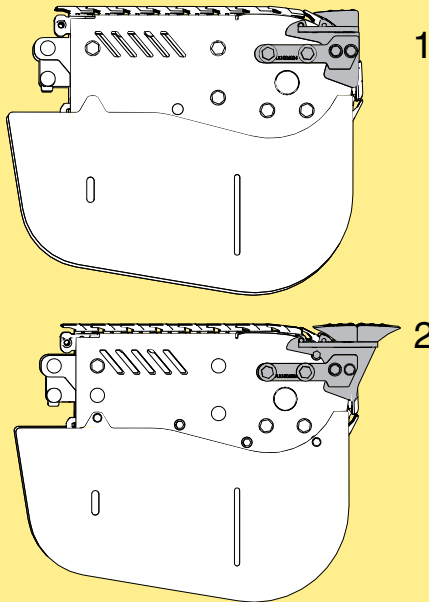


Passive bridge* **XBNGX A300**

<i>From:</i>	<i>To:</i>
Heavy Drive unit	Heavy Idler
Heavy Drive unit	Compact Idler

* Use online configurator when ordering.

Passive bridge, connecting drive/idler to machine or external application

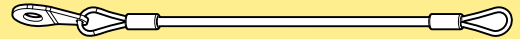


Passive bridge*
Single roller (1) or Double roller (2) **XBNGX A300**

<i>From:</i>	<i>To:</i>
Heavy Drive	External
External	Heavy Idler
External	Compact Idler

* Use online configurator when ordering.

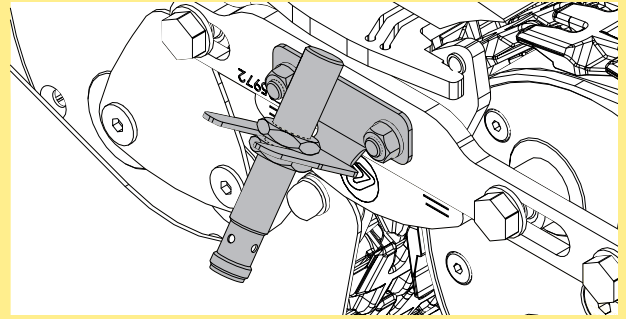
Attachment wire



Wire for attaching roller to holder **FLX1006041**

*Also available as a configuration option through XBNGX A300.

Sensor Kit



Bridge in position sensor kit
On bridge **FLX1006042**
On beam **FLX1006044**

*Also available as a configuration option through XBNGX A300.

*Note
Bridges can not be used with cleated chain.

PO
X70X
X85X
X180X
X300X
WL 222X
WL 273X
WL 374X
WL 526X
WL 678X
CSX
GRX
FSTX
TR
APX
IDX

Plain bends

Item no	Angle (a)	Radius (R)	Effective track length	Slide rails (m)
XBBPX 30A300R7 XBBPX 30A300R7C	30°	700 mm	0,80 m (1,60 m 2-way)	4 m
XBBPX 30A300R10 XBBPX 30A300R10C	30°	1000 mm	0,92 m (1,85 m 2-way)	7,4 m
XBBPX 45A300R7 XBBPX 45A300R7C	45°	700 mm	0,95 m (1,90 m 2-way)	8 m
XBBPX 45A300R10 XBBPX 45A300R10C	45°	1000 mm	1,12 m (2,40 m 2-way)	9,5 m
XBBPX 90A300R7 XBBPX 90A300R7C	90°	700 mm	1,50 m (3,0 m 2-way)	12 m
XBBPX 90A300R10 XBBPX 90A300R10C	90°	1000 mm	2,0 m (4,0 m 2-way)	15,8 m
XBBPX 45A300T10 XBBPX 45A300T10C	$5^\circ \leq a \leq 45^\circ$	$700 \leq R \leq 1000$ mm	-	-
XBBPX 90A300T10 XBBPX 90A300T10C	$45^\circ < a \leq 90^\circ$	$700 \leq R \leq 1000$ mm	-	-
XBBPX 45A300T20 XBBPX 45A300T20C	$5^\circ \leq a \leq 45^\circ$	$1000 < R \leq 2000$ mm	-	-
XBBPX 90A300T15 XBBPX 90A300T15C	$45^\circ < a \leq 90^\circ$	$1000 < R \leq 1500$ mm	-	-

Plain bend, 30°

Support rail on inner beam included

Plain bend, 30° X300X
R=700 mm
R=1000 mm

XBBPX 30A300R7
XBBPX 30A300R10

Plain bend, 30° X300C
R=700 mm
R=1000 mm

XBBPX 30A300R7C
XBBPX 30A300R10C

Plain bends, 45°

Support rail on inner beam included

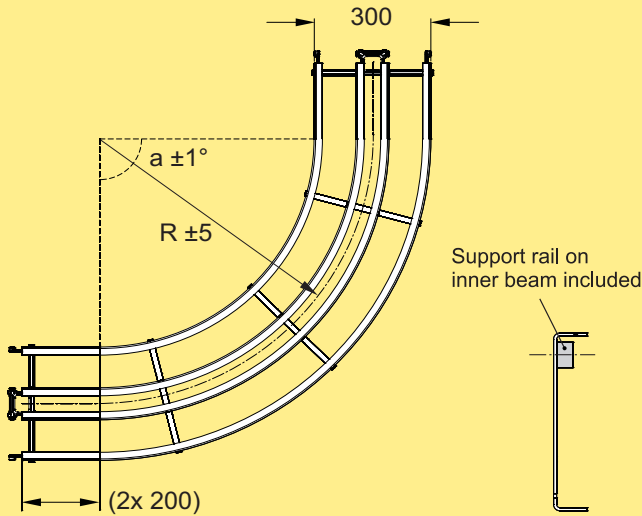
Plain bend, 45° X300X
R=700 mm
R=1000 mm

XBBPX 45A300R7
XBBPX 45A300R10

Plain bend, 45° X300C
R=700 mm
R=1000 mm

XBBPX 45A300R7C
XBBPX 45A300R10C

Plain bend, 90°



Plain bend, 90° X300X
R=700 mm
R=1000 mm

XBBPX 90A300R7
XBBPX 90A300R10

Plain bend, 90° X300C
R=700 mm
R=1000 mm

XBBPX 90A300R7C
XBBPX 90A300R10C

Plain bends, 5° - 90°

Plain bend X300X, 5°-45°±1°
700 ≤ R ≤ 1000 ±5 mm
1000 < R ≤ 2000 ±5 mm

XBBPX 45A300T10
XBBPX 45A300T20

Plain bend X300X, 46°-90°±1°
700 ≤ R ≤ 1000 ±5 mm
1000 < R ≤ 1500 ±5 mm

XBBPX 90A300T10
XBBPX 90A300T15

Plain bend X300C, 5°-45°±1°
700 ≤ R ≤ 1000 ±5 mm
1000 < R ≤ 2000 ±5 mm

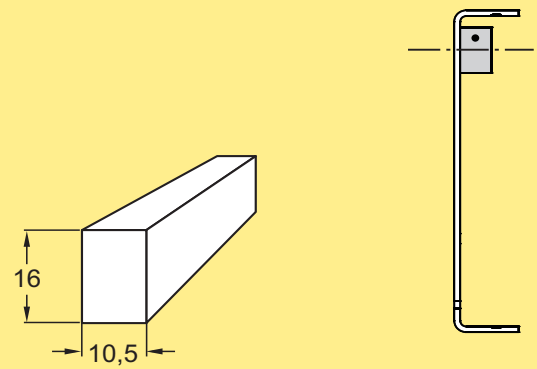
XBBPX 45A300T10C
XBBPX 45A300T20C

Plain bend X300C, 46°-90°±1°
700 ≤ R ≤ 1000 ±5 mm
1000 < R ≤ 1500 ±5 mm

XBBPX 90A300T10C
XBBPX 90A300T15C

Use online configurator when ordering.

Support rail for plain bends (spare part)



Support rail for plain bends,
Length 2,4 m

5048598

Fix with sheet metal screw ISO 7049 4,2x9,5 or similar.

PO

X70X

X85X

X180X

X300X

WL
222X

WL
273X

WL
374X

WL
526X

WL
678X

CSX

GRX

FSTX

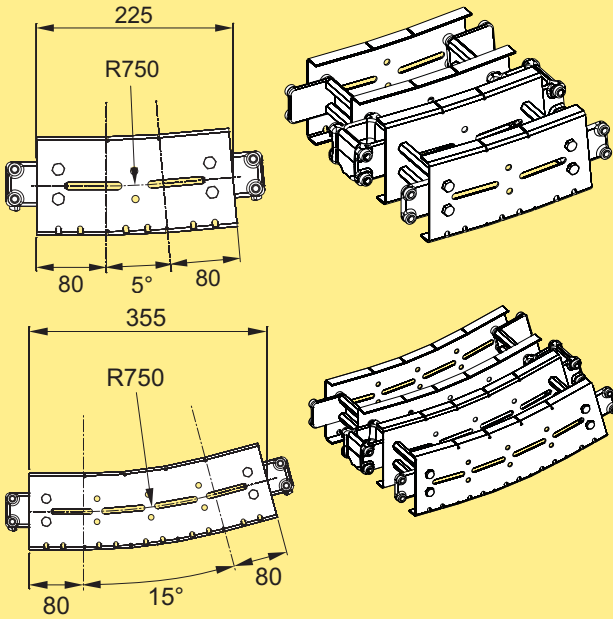
TR

APX

IDX

Vertical bends

Vertical bend, positive angle

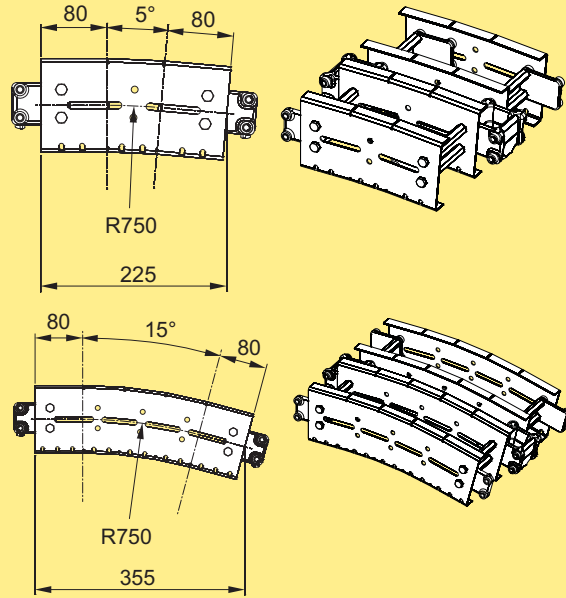


Vertical bend, pos., 5°
Vertical bend, pos., 15°

XBBVX 5A300R7P
XBBVX 15A300R7P

Effective track length (top + bottom): 5°: 0,50 m, 15°: 0,75 m

Vertical bend, negative angle

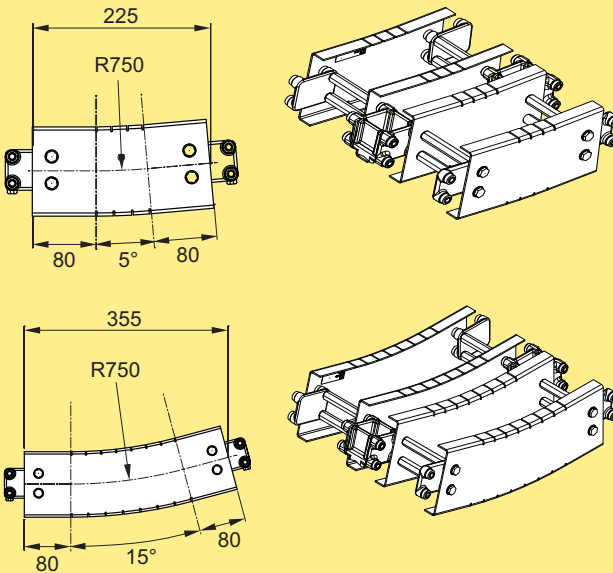


Vertical bend, neg., 5°
Vertical bend, neg., 15°

XBBVX 5A300R7N
XBBVX 15A300R7N

Effective track length (top + bottom): 5°: 0,50 m, 15°: 0,75 m

Vertical bend, positive angle

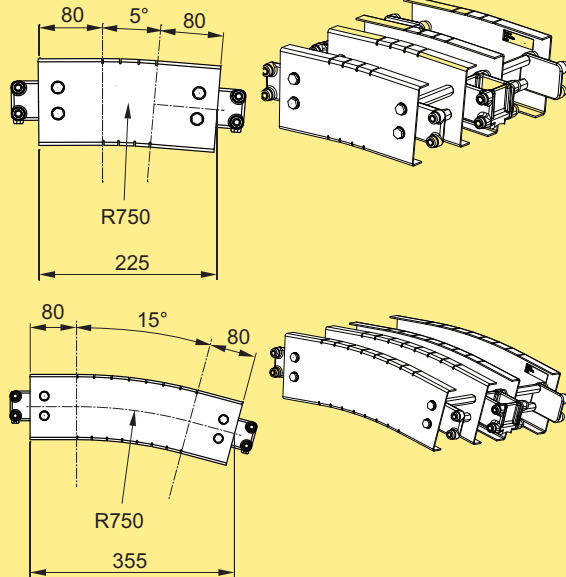


Vertical bend, pos., 5°
Vertical bend, pos., 15°

XBBVX 5A300R7PC
XBBVX 15A300R7PC

Effective track length (top + bottom): 5°: 0,50 m, 15°: 0,75 m

Vertical bend, negative angle



Vertical bend, neg., 5°
Vertical bend, neg., 15°

XBBVX 5A300R7NC
XBBVX 15A300R7NC

Effective track length (top + bottom): 5°: 0,50 m, 15°: 0,75 m