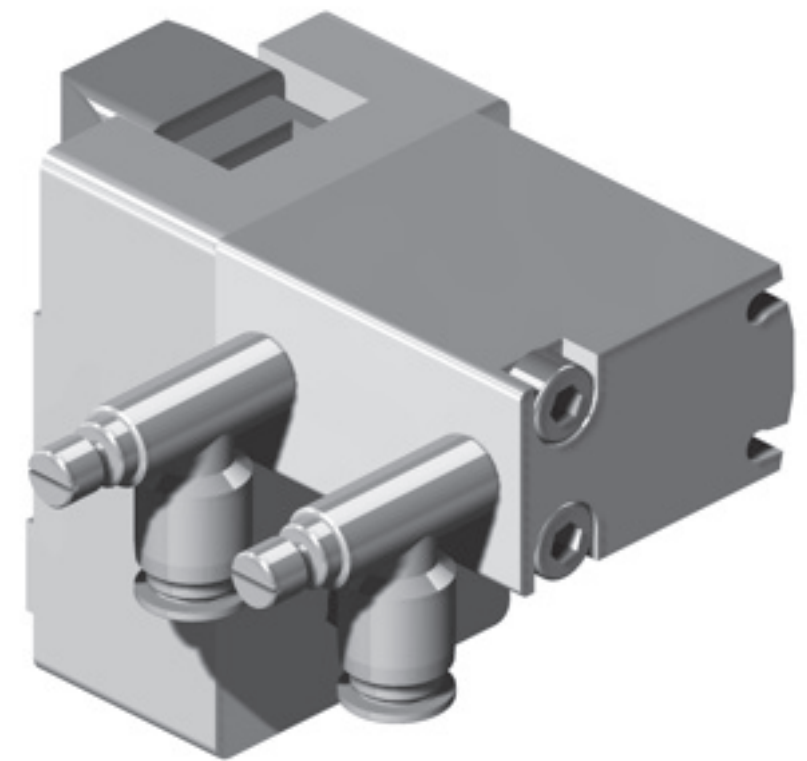


We hereby declare that the following equipment is intended to be incorporated into a FlexLink conveyor system and thereby forming a machine. Operation is prohibited until it has been determined that the machine in which these products are incorporated, has been declared in conformity with the Machinery Directive 2006/42/EC, together with amendments which have entered into force as of the date of issue of this declaration, with particular reference to the essential health and safety requirements in connection with the design, construction and manufacture of the below specified equipment.

- Pneumatic Stop, XLPD 20x10 X65

ASSEMBLY INSTRUCTION

Pneumatic Stop XLPD 20x10 X65



FlexLink Components AB



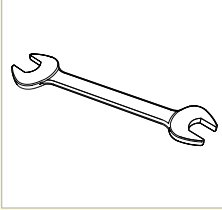
Svante Anderholm
Chief Operating Officer

Flexlink Components AB

Fredrik Sandinge
Responsible Technical file

PRE-REQUISITES

Recommended tools



SAFETY



Safety considerations

Before starting any maintenance on your FlexLink equipment, the following safety instructions must be observed:

- All electricity must be switched off.
- Make sure that the motor switch is also switched off and locked in the "off" position.
- Pneumatic and/or hydraulic power must be disconnected and any pressure accumulation released.
- Products being transported should, if possible, be removed from the conveyor chain.
- Staff affected must be informed that maintenance work is being undertaken.

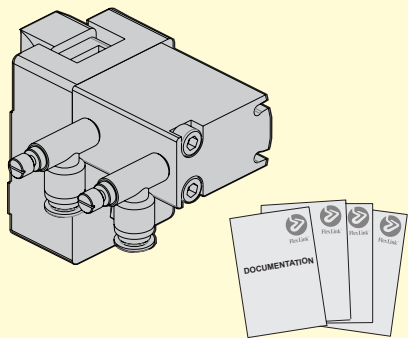


WARNING
The system must not be operated without safety equipment properly mounted.

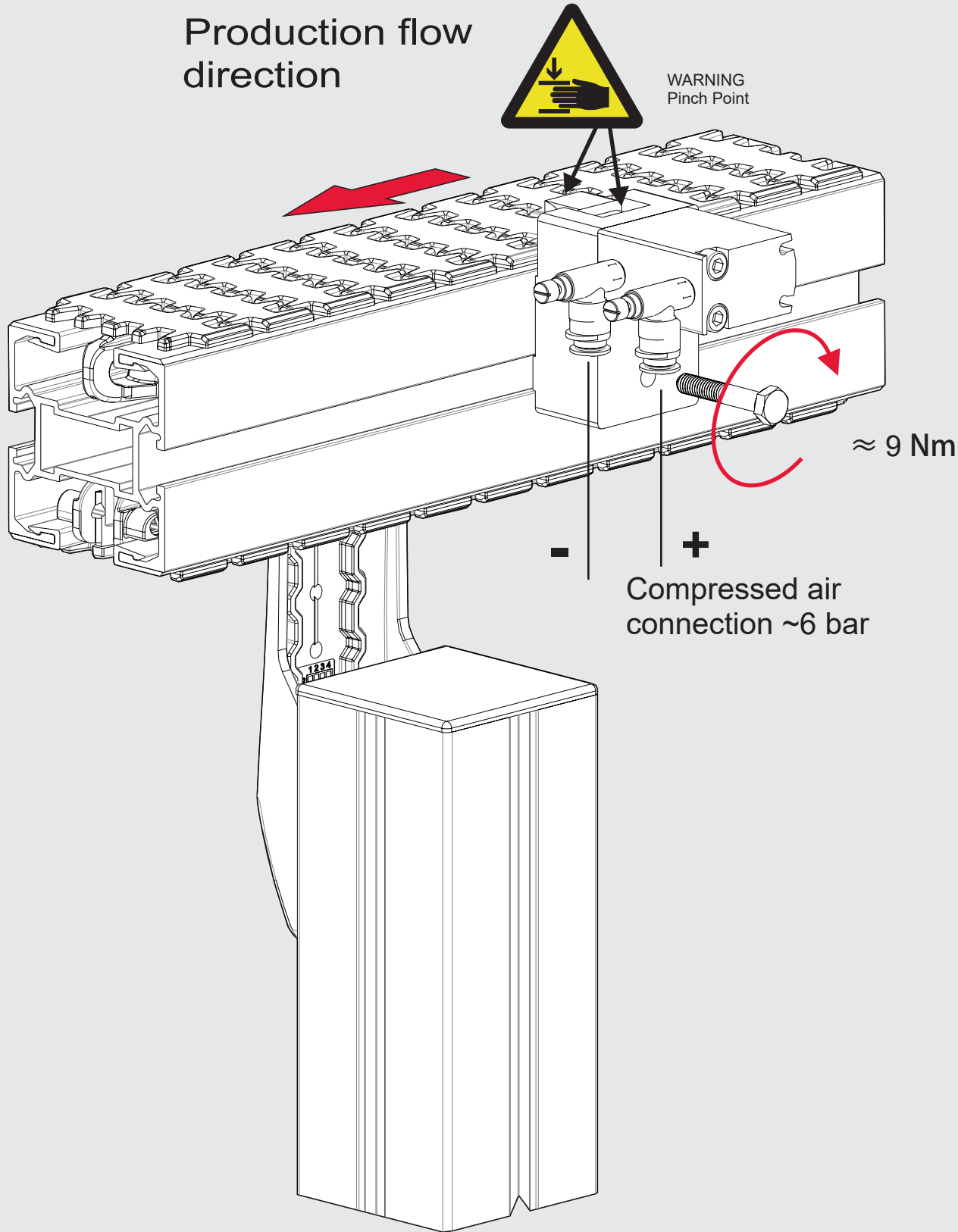


WARNING
Pinch Point

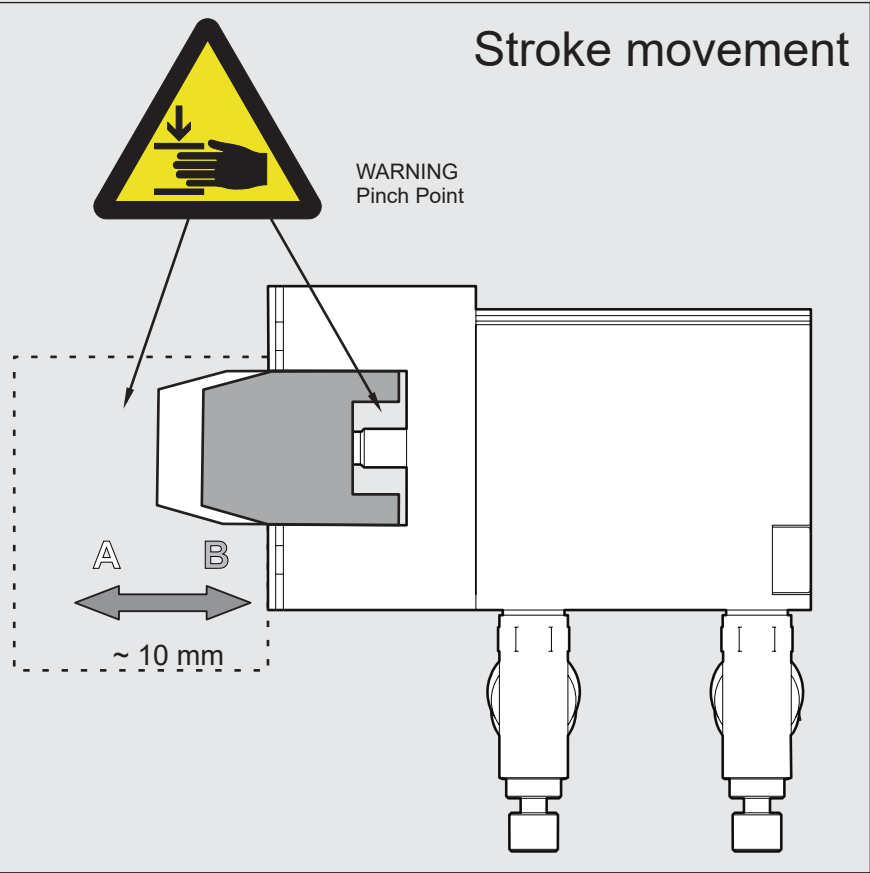
COMPONENTS



Production flow direction



Stroke movement



| Basic value, Torque for dimension | | | |
|-----------------------------------|-------------------|----------------------|--------------------|
| M5 | M6 | M8 | M10 |
| 4 Nm / 35 lb. in. | 9 Nm / 80 lb. in. | 24,5 Nm / 217 lb.in. | 45 Nm / 398 lb.in. |