

Stainless steel conveyor system X300X, X300Y, X300C

Contents

System information.....	77	Drive units – configuration strings	84
Conveyor chain	78	End drive units	85
Chain accessories	78	Idler unit.....	87
Conveyor beams	79	Drip catcher.....	88
Slide rails	81	Bridges	89
Tools for conveyor beam.....	82	Plain bends.....	90
Drive and idler units – Introduction.....	83	Vertical bends.....	91

System information



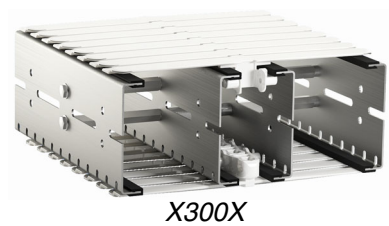
Conveyor with focus on robustness and cleanliness

X300X - Standard version: Designed to suit the requirements of food and packaging applications.

X300Y - Covered return chain version: Designed with self-drainage to avoid malfunction of the chain in case of machine spillage.

X300C - Wipe off version: Closed surface design with minimum holes or slots for easier cleaning and even better hygiene.

Chain width 295 mm



Environment

- Operating temperatures –20 °C to +60 °C
- Operating humidity 10% to 95% RH
- See chapter Technical reference for Noise level

Improved cleanliness conveyor

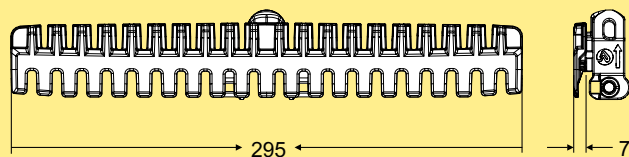
The X300X conveyor system has been evaluated based on field experience and suggestions from customers. With focus on structure rigidity and robustness, easy design, and easier cleaning, several components have been improved with features like better drainage and smaller contact surfaces.

Technical characteristics

Drive unit capacity	1250 N
Chain tension limit	1250 N
Beam width	300 mm
Chain width	295 mm
Chain pitch.....	33,5 mm
Item width	70–400 mm
Maximum item weight	15 kg
Maximum weight on conveyor	200 kg
Maximum conveyor length.....	30 m

Conveyor chain

Plain chain



Plain chain
Length 3 m

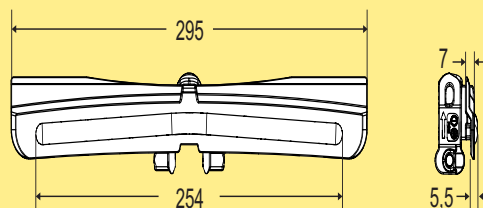
XBTPX 3A300 K

Plain link kit *

FLX1003735

* Link kit contains 10 links, 10 pivots, 10 steel pins

Friction top chain



Friction top chain
Length 3 m

XBTP 3A295 F

Use the online configurator to specify and order.

Friction top link kit
Kit with 10 links *

5054874

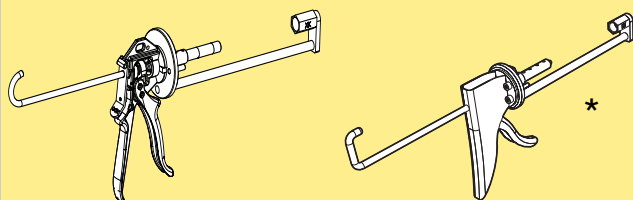
*Note. Links are delivered as a kit containing 10 links and the necessary steel pins and plastic pivots.

Other chains

See the Chain guide for selection of other chains.

Chain accessories

Pin insertion tool for chain

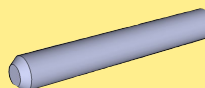


Pin insertion tool
X85-X180/X300
X85-X180/X300-XH, PRO ver-
sion*

**XMMJ 6
XBMJ 6 P**

*This tool is recommended for frequent users

Stainless steel pin

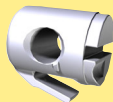


Steel pin
Stainless steel

5111172

Steel pin kit, contains 25 pcs.

Plastic pivot for chain



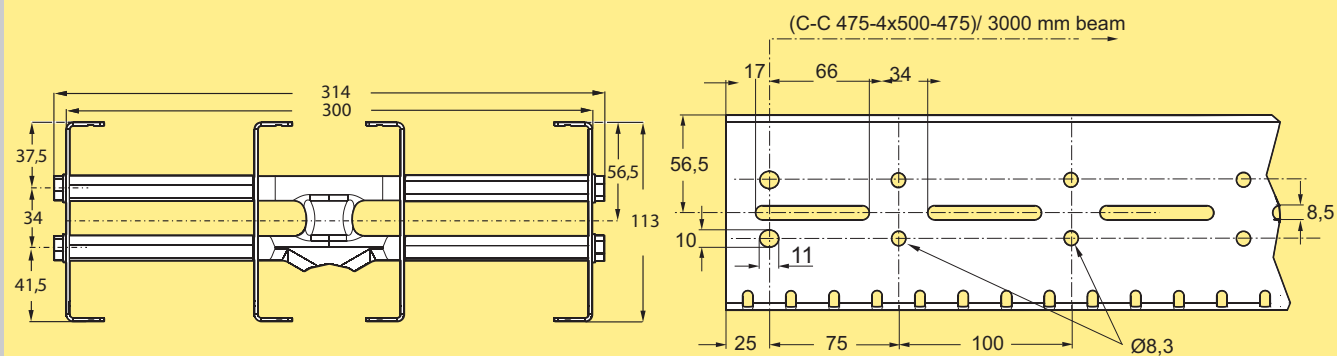
Plastic pivot kit

5111169

Spare parts kit, contains 25 pcs.

Conveyor beams

Conveyor beam, 300 mm



Conveyor Beam

Length 3 m (3000 ±1,5 mm)

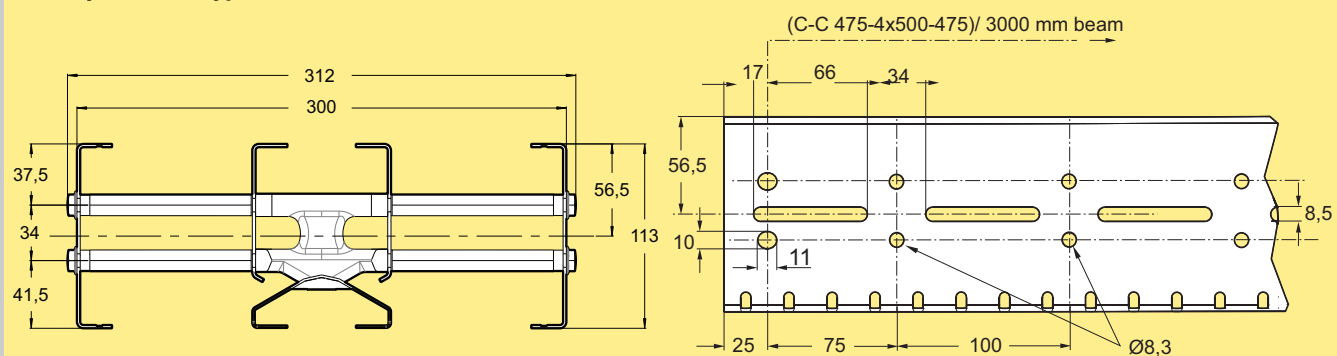
XBCBX 3A300

Length to order (150- 2999 mm)

XBCBX LA300

All X300X beams are delivered fully assembled.

Conveyor beam type Y, 300 mm



Conveyor Beam

Length 3 m (3000 ±1,5 mm)

XBCBX 3A300Y

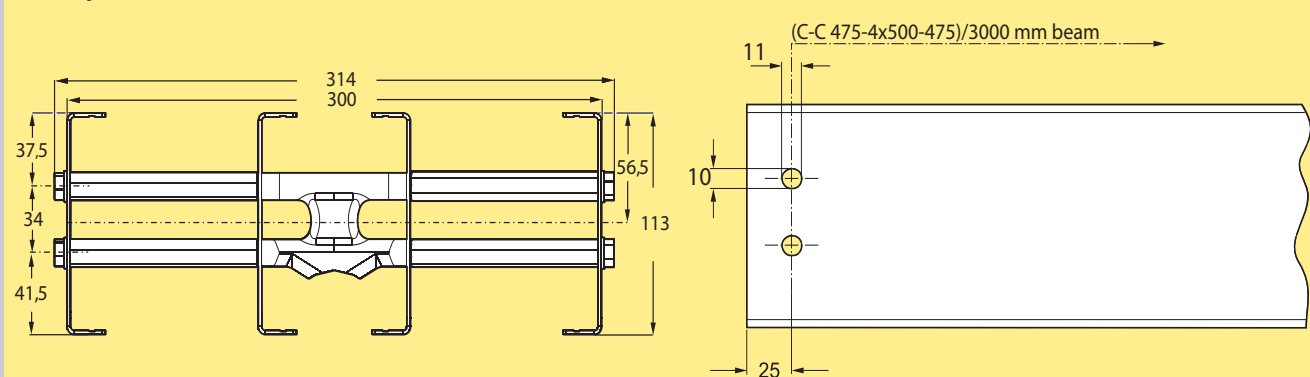
Length to order (150- 2999 mm)

XBCBX LA300Y

All X300X beams are delivered fully assembled.

Screw Kit 5114562 included

Conveyor beam, 300 mm



Conveyor Beam

Length 3 m (3000 ±1,5 mm)

XBCBX 3A300C

Length to order (150- 2999 mm)

XBCBX LA300C

All X300X beams are delivered fully assembled.

PO

X70X

X85X

X180X

X300X

WL
222X

WL
273X

WL
374X

WL
526X

WL
678X

CSX

GRX

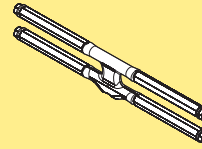
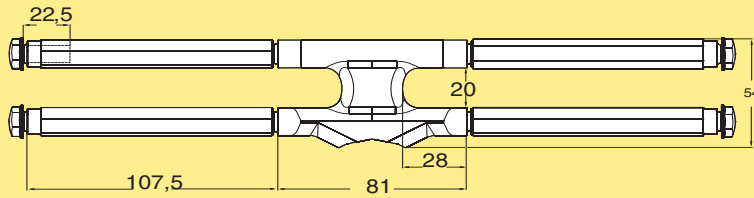
FSTX

TR

APX

IDX

Beam spacer kit



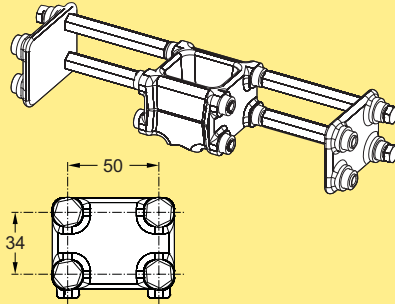
Beam spacer kit, Stainless steel
Beam spacer kit for X300X

XBCEX A300

Including screws.

Additional beam stiffness can be obtained by using additional beam brackets. The beams have predrilled 8,3 mm holes at 100 mm intervals that need to be increased to 10 mm.

Connecting bracket kit



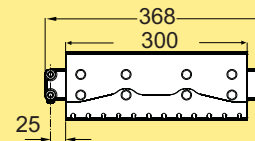
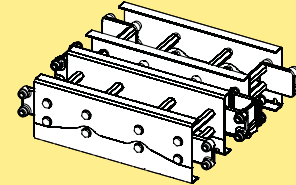
Connecting bracket kit
Stainless steel

Connecting bracket kit for X300X **XBCJX A300**

Including screws.

The beams have predrilled 10 mm holes, see XBCBX 3A85.

Beam section for chain installation

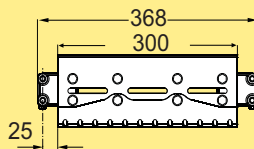
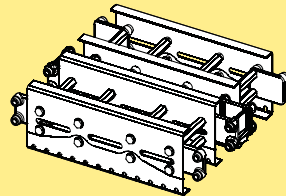


Beam section for chain installation.

XBCCX 300A300C

Including 2 Connecting bracket kit XBCJX A300

Beam section for chain installation

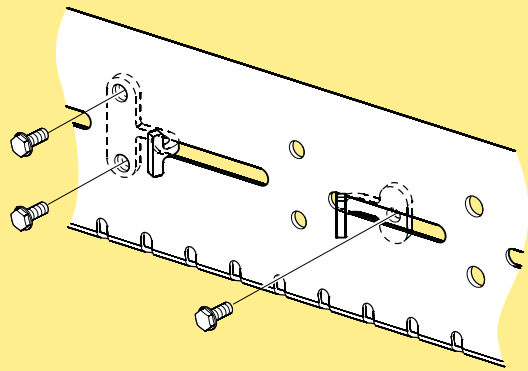
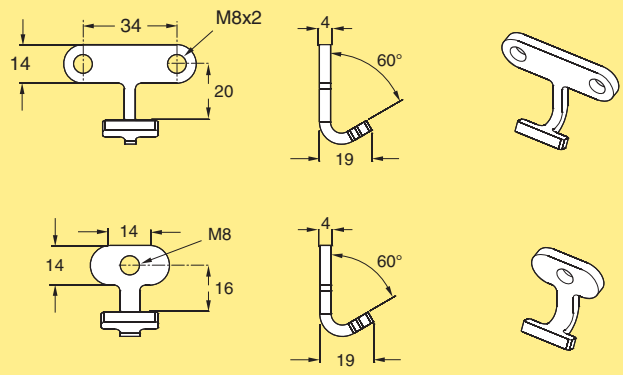


Beam section for chain installation.

XBCCX 300A300

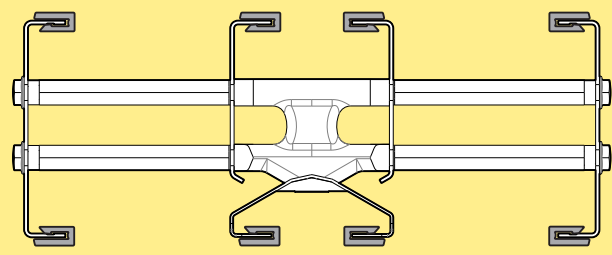
Including 2 Connecting bracket kit XBCJX A300

Nut, stainless steel



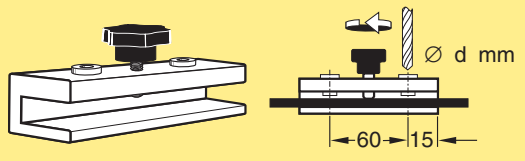
Nut M8x2 **5113998**
Nut M8x1 **5114181**

Nut with threaded hole (M8) for connection of sensors and other accessories when the conveyor chain is in place. By placing nuts inside the beam at the holes, accessories can be attached using M8 A4 screws. NOTE! Be careful when installing so no nut is dropped inside the beam, this can lead to a large additional work or operational damage.



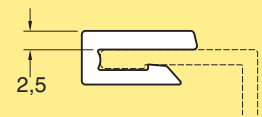
Note. Always use 8 slide rails

Drill fixture for slide rail



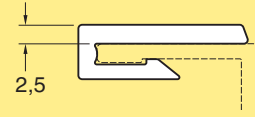
Drill fixture for slide rail
d=4,2 mm **3920500**

Plastic slide rails, narrow



Slide rail
Length 25 m
HDPE (Black) **XBCR 25**
PE-UHMV (White) **XBCR 25 U**
PE-UHMW (Blue) **XBCR 25 UL A**
PVDF (Transparent white) **XBCR 25 P**
PA-PE (Grey) (Should not be used in wet applications) **XBCR 25 H**

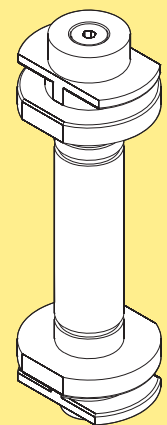
Plastic slide rails, wide



Slide rail
Length 25 m
HDPE (Black) **XBCR 25 B**
PE-UHMV (White) **XBCR 25 UB**
PVDF (Transparent white) **XBCR 25 PB**
PA-PE (Grey) (Should not be used in wet applications) **XBCR 25 HB**

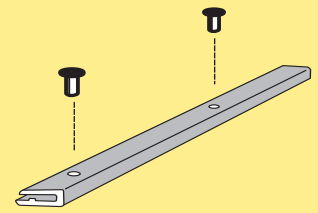
Note. The wide slide rails are not suitable for use in bends.

Mounting tool for slide rail



Mounting tool for slide rail **XBMR 170**

Stainless steel rivet



Stainless steel rivet, 4 mm **XLAHX 4x7**
Note. Contains 25 pcs.

PO
X70X
X85X
X180X

X300X

WL
222X

WL
273X

WL
374X

WL
526X

WL
678X

CSX

GRX

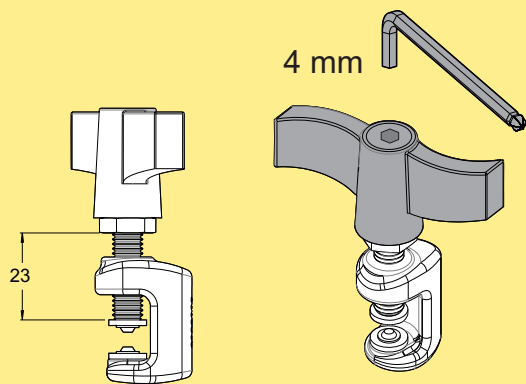
FSTX

TR

APX

IDX

Rivet crimping clamp



Rivet crimping clamp
For 4 mm rivets
(note: Allen key not included)

3923005

Rivet crimping pliers

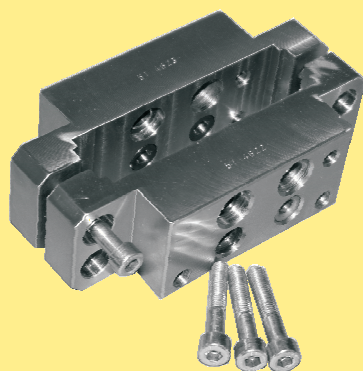


Rivet crimping pliers
For 4 mm rivets

5051395

Tools for conveyor beam

Drill fixture



Drill fixture

5114621

For use when additional holes are needed on the beam sides.

Including:

Drill 4,5 mm

Drill 8,3 mm

Drill 11,0 mm

and instructions for use.

Drill



Twist Drills DIN 338 HSS-E (Co 8)
Type N-HD Cobalt Alloyed, Split Point

Drill 11,0 mm

5115050

Drill 10,2 mm

5115056

Drill 8,3 mm

5115051

Drill 4,5 mm

5115052

Drill 4,2 mm (for 3920500)

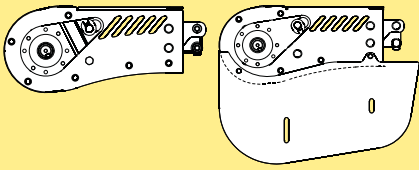
5115053

For high strength alloys on CrNi base such as Hastelloy, Inconel, Monel, Nimonic, stainless steels, heat and acid-proof steels (up to 1400 N/mm² tensile strength).

Drive unit types

The X300X system drive unit capacities is maximum 1250 N. The actual capacity depends on the speed.
Available motors include variable speed types (V) as well as fixed speed motors (F).

End drive units

Size	Direct drive, no slip clutch	
		
Drive unit	F, V	
Drive unit, guided	F, V	

Motor specifications

Motors are available for 230/400 V, 50 Hz and 230/460 V, 60 Hz. Variable speed motors are SEW Movimot, 380–500 V. Note that variable speed motors include a control box that adds 120 mm to the width of the motor.
IP55 available with standard oil.
IP65 available with food grade oil.

Idler unit types

Idler units are available in two versions, Compact and Standard.

Ordering information

Drive units with motors must be specified using the web-based configurator. The configurator provides detailed information and step-by-step guidance in the specification process. A product code string is generated, containing the specification details. See next page for examples of code strings.
Drive units *without* motors can be ordered using the designations in the catalogue.

Dimension

Note that dimensions relating to drive unit motors depend on the motor specified during the configuration.

P0
X70X
X85X
X180X
X300X
WL 222X
WL 273X
WL 374X
WL 526X
WL 678X
CSX
GRX
FSTX
TR
APX
IDX

Drive units – configuration strings

Below, two examples of text strings obtained from the configurator with explanations are presented.

Drive unit with fixed speed motor

Item no	A	B	C	D	E	G	H	I							
XBEBX A300	HNP	-	L	-	G	-	V4	-	SA37	-	50/230	-	0,18kW	-	TF

Drive unit with variable speed motor

Item no	A	B	D	E	F	G	J	K
XBEBX A300	HNPV	- L -	V6-15	- SA37	- MM03	- 50/380-500	- C	- P

Item no - Drive type

XBEBX: End drive

A – 0-Unit

HNP: Heavy, direct drive, no slip clutch
....V: Variable speed

B – Motor position

L: Left
R: Right

C – End drive with guided chain

G: Guided (position is omitted for non-guided)

D – Speed

V...: Fixed speed... m/min
V... -...: Variable speed range...-... m/min

E – Gearbox

SA37: SEW motor type SA37
WA30: SEW gear box type WA30

F – Movimot size

MM03: SEW Movimot type, 0,37 kW
MM05: SEW Movimot type, 0,55 kW
MM07: SEW Movimot type, 0,75 kW
MM11: SEW Movimot type, 1,1 kW
(position is omitted for fixed speed motors)

G – Electrical environment

50/230: 50 Hz, 230 V
50/400: 50 Hz, 400 V
60/230: 60 Hz, 230 V
60/460: 60 Hz, 460 V
50/380-500: SEW Movimot variable speed motor

H – Motor power

... kW: Motor power, kW
(position is omitted for variable speed motors
see position F)

I – Thermal protection

No: No thermal protection
TF: Thermal protection type TF
TH: Thermal protection type TH
(position is omitted for variable speed motors)

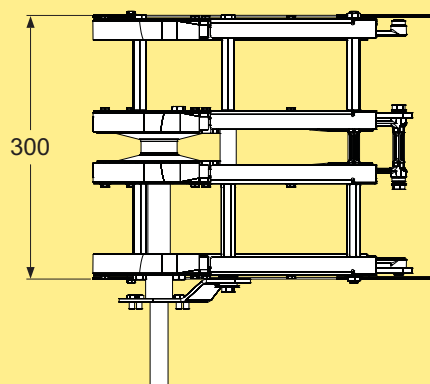
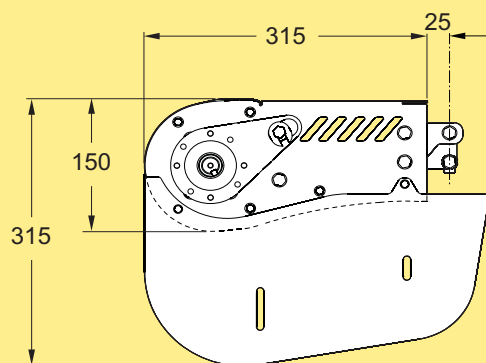
J – Hybrid cable

No: No hybrid cable
C: Hybrid cable included in SEW Movimot
(position is omitted for fixed speed motors)

K – Fieldbus

No: No fieldbus
P: Profibus fieldbus, maintenance switch
D: DeviceNet fieldbus, maintenance switch
(position is omitted for fixed speed motors)

End drive unit, direct drive, no slip clutch



End drive unit
Direct drive. No slip clutch.
Maximum traction force: up to 1250 N.
Maximum speed 80 m/min for X300X.

Motor on left side:

Fixed/variable speed * **XBEBX A300**
Without motor **XBEBX0A300HNLP**

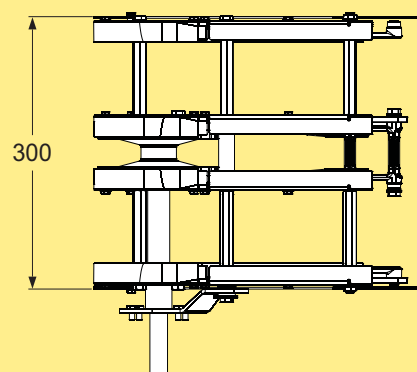
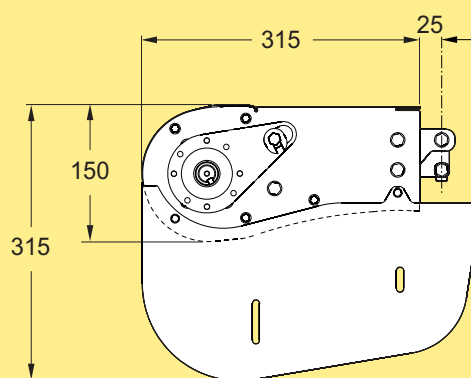
Motor on right side (not shown):

Fixed/variable speed * **XBEBX A300**
Without motor **XBEBX0A300HNRP**

* Use online configurator when ordering.

Effective track length: 0,80 m

End drive unit, direct drive, no slip clutch



End drive unit
Direct drive. No slip clutch.
Maximum traction force: up to 1250 N.
Maximum speed 80 m/min for X300X.

Motor on left side:

Fixed/variable speed * **XBEBX A300C**
Without motor **XBEBX0300HNLP**

Motor on right side (not shown):

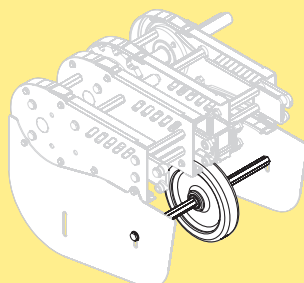
Fixed/variable speed * **XBEBX A300C**
Without motor **XBEBX0A300HNRPC**

* Use online configurator when ordering.

Effective track length: 0,80 m

P0
X70X
X85X
X180X
X300X
WL 222X
WL 273X
WL 374X
WL 526X
WL 678X
CSX
GRX
FSTX
TR
APX
IDX

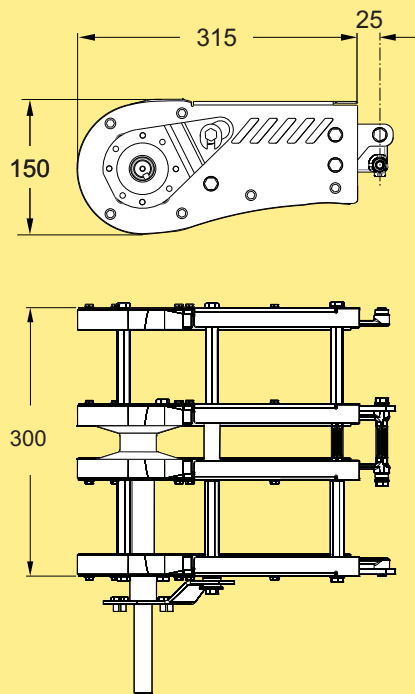
Guide wheel kit 300



Guide wheel for drive units **5114930**

Including wheel, shaft and mounting hardware.
Note. Can only be used with plain chain. For use in high speed operation (60 m/min and above).

End drive unit, guided chain, no slip clutch



End drive unit

Direct drive with guided chain. No slip clutch.
Maximum traction force: up to 1250 N.
Maximum speed 80 m/min for X300X.

Motor on left side:

Fixed/variable speed * **XBEBX A300**
Without motor **XBEBX0A300HNLGP**

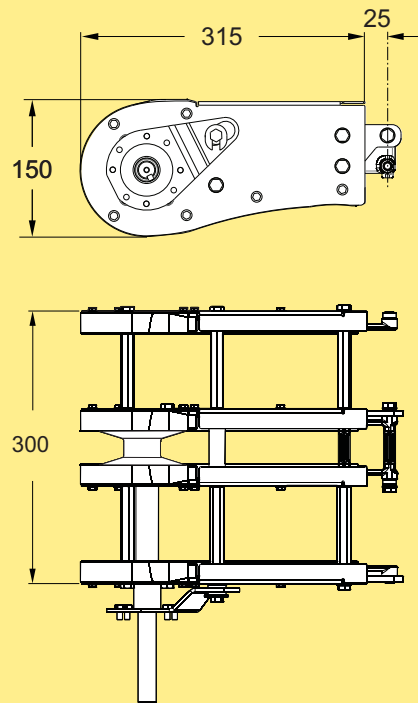
Motor on right side (not shown):

Fixed/variable speed * **XBEBX A300**
Without motor **XBEBX0A300HNRGP**

* Use online configurator when ordering.

Effective track length: 0,80 m

End drive unit, guided chain, no slip clutch



End drive unit

Direct drive with guided chain. No slip clutch.
Maximum traction force: up to 1250 N.
Maximum speed 80 m/min for X300X.

Motor on left side:

Fixed/variable speed * **XBEBX A300C**
Without motor **XBEBX0A300HNLGPC**

Motor on right side (not shown):

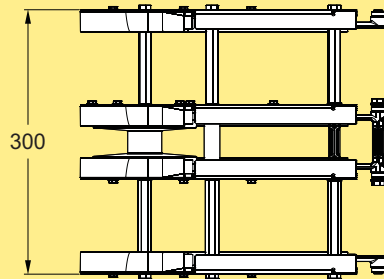
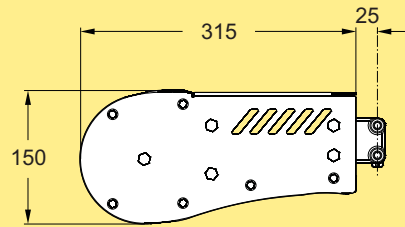
Fixed/variable speed * **XBEBX A300C**
Without motor **XBEBX0A300HNRGPC**

* Use online configurator when ordering.

Effective track length: 0,80 m

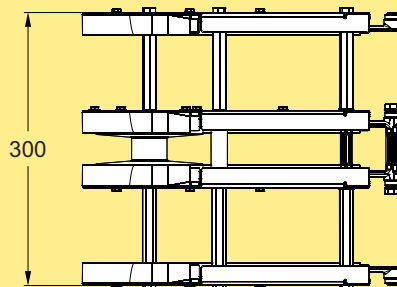
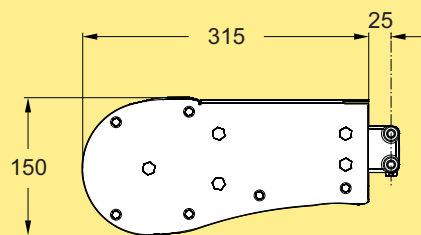
Idler unit

Idler end unit



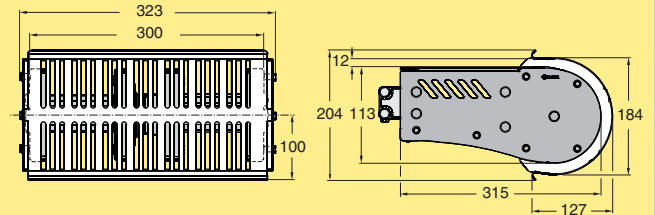
Idler end unit X300X **XBEJX A300**
Effective track length: 0,70 m.

Idler end unit



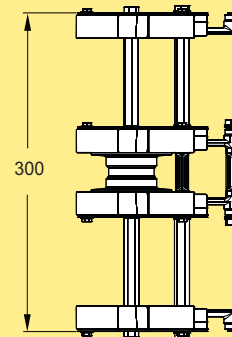
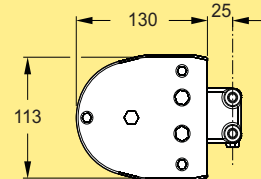
Idler end unit X300X **XBEJX A300C**
Effective track length: 0,70 m.

Protective cover for Idler end



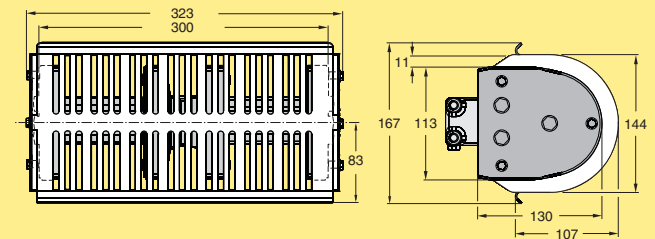
Protective cover for Idler end unit XBEJX A300 **XBSJX A300**

Idler end unit, Compact



Idler end unit X300X **XBEJX A300 S**
Effective track length: 0,35 m.

Protective cover for Idler end, Compact

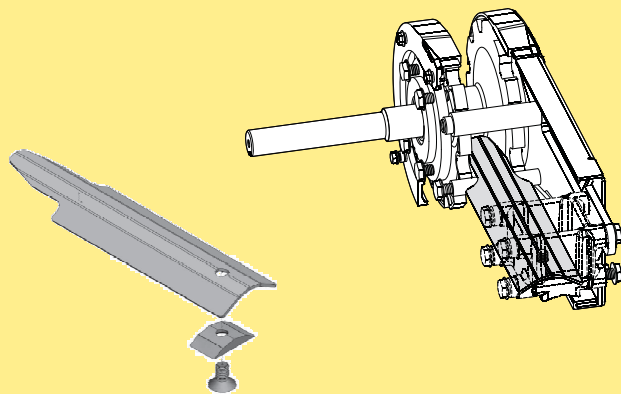


Protective cover for Idler end unit XBEJX A300 S **XBSJX A300 S**

Note!
Always use protective cover for Idler ends to protect persons from clamp risk.

P0
X70X
X85X
X180X
X300X
WL 222X
WL 273X
WL 374X
WL 526X
WL 678X
CSX
GRX
FSTX
TR
APX
IDX

Drip catcher kit

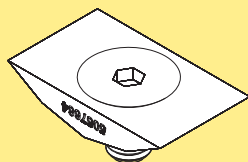


Drip catcher kit

5114763

For drive units and idler ends, to be used together with conveyor beams type Y with protected return beams including 5114562 Screw kit.

Screw kit

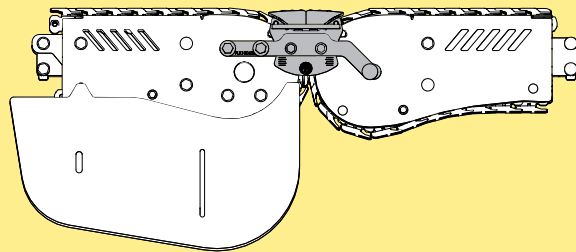


Screw kit

5114562

For return beam, type Y, 85 mm, or Drip catcher kit.

Passive bridge from conveyor to conveyor



Passive bridge*

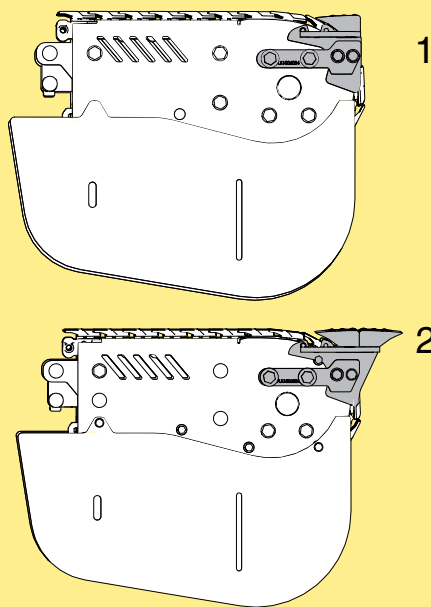
XBNGX A300

From: Heavy Drive unit
Heavy Drive unit

To: Heavy Idler
Compact Idler

* Use online configurator when ordering.

Passive bridge, connecting drive/idler to machine or external application



Passive bridge*

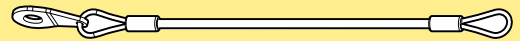
Single roller (1) or Double roller (2) **XBNGX A300**

From: Heavy Drive
External
External

To: External
Heavy Idler
Compact Idler

* Use online configurator when ordering.

Attachment wire

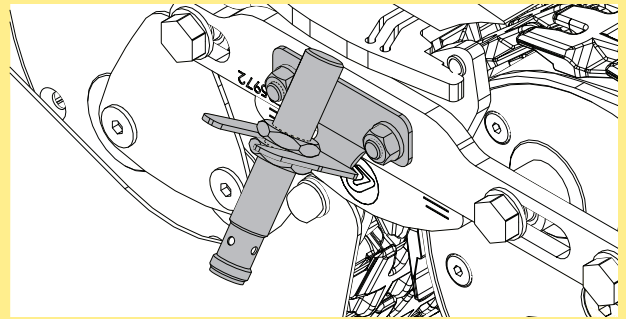


Wire for attaching roller to holder

FLX1006041

*Also available as a configuration option through XBNGX A300.

Sensor Kit



Bridge in position sensor kit
On bridge
On beam

FLX1006042
FLX1006044

*Also available as a configuration option through XBNGX A300.

*Note

Bridges can not be used with cleated chain.

P0

X70X

X85X

X180X

X300X

WL
222X

WL
273X

WL
374X

WL
526X

WL
678X

CSX

GRX

FSTX

TR

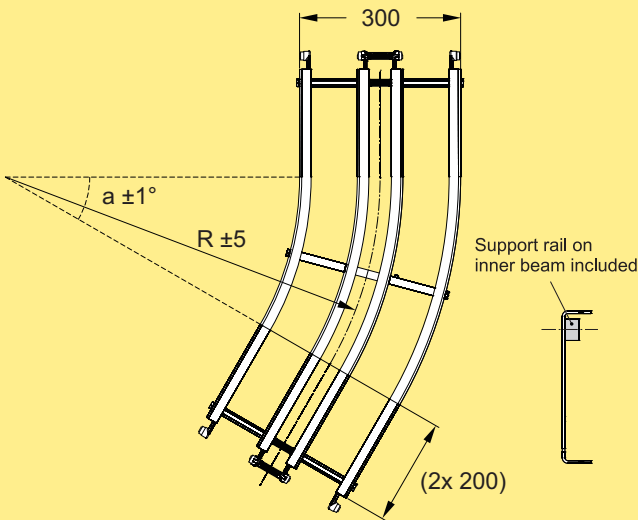
APX

IDX

Plain bends

Item no	Angle (a)	Radius (R)	Effective track length	Slide rails (m)
XBBPX 30A300R7	30°	700 mm	0,80 m (1,60 m 2-way)	4 m
XBBPX 30A300R10	30°	1000 mm	0,92 m (1,85 m 2-way)	7,4 m
XBBPX 45A300R7	45°	700 mm	0,95 m (1,90 m 2-way)	8 m
XBBPX 45A300R10	45°	1000 mm	1,12 m (2,40 m 2-way)	9,5 m
XBBPX 90A300R7	90°	700 mm	1,50 m (3,0 m 2-way)	12 m
XBBPX 90A300R10	90°	1000 mm	2,0 m (4,0 m 2-way)	15,8 m

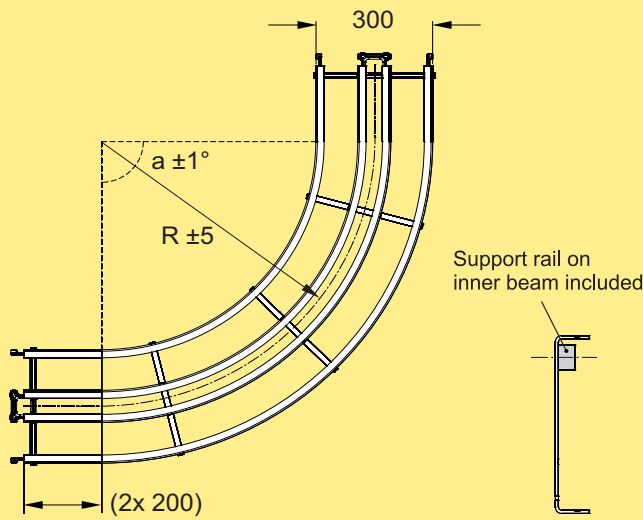
Plain bend, 30°



Plain bend, 30° X300X
R=700 mm
R=1000 mm

XBBPX 30A300R7
XBBPX 30A300R10

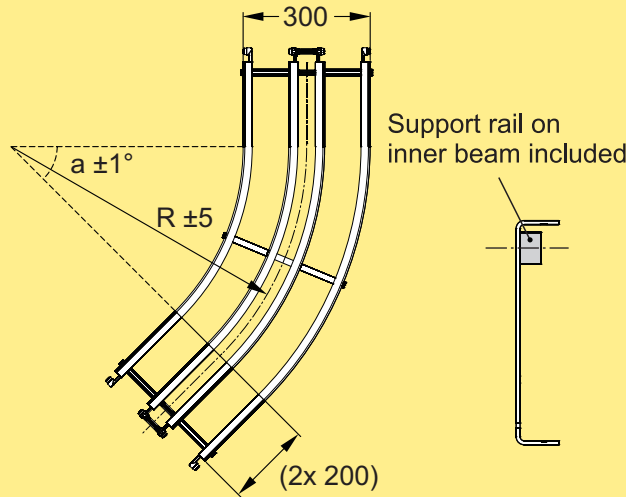
Plain bend, 90°



Plain bend, 90° X300X
R=700 mm
R=1000 mm

XBBPX 90A300R7
XBBPX 90A300R10

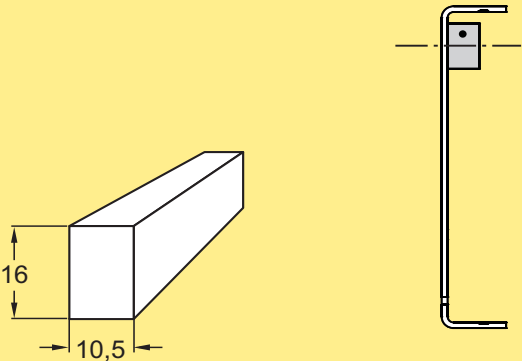
Plain bends, 45°



Plain bend, 45° X300X
R=700 mm
R=1000 mm

XBBPX 45A300R7
XBBPX 45A300R10

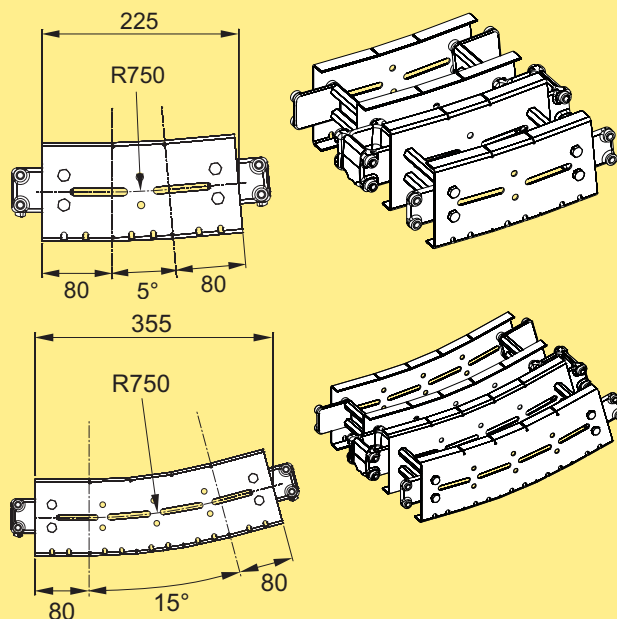
Support rail for plain bends (spare part)



Support rail for plain bends,
Length 2,4 m
5048598
Fix with sheet metal screw ISO 7049 4,2x9,5 or similar.

Vertical bends

Vertical bend, positive angle

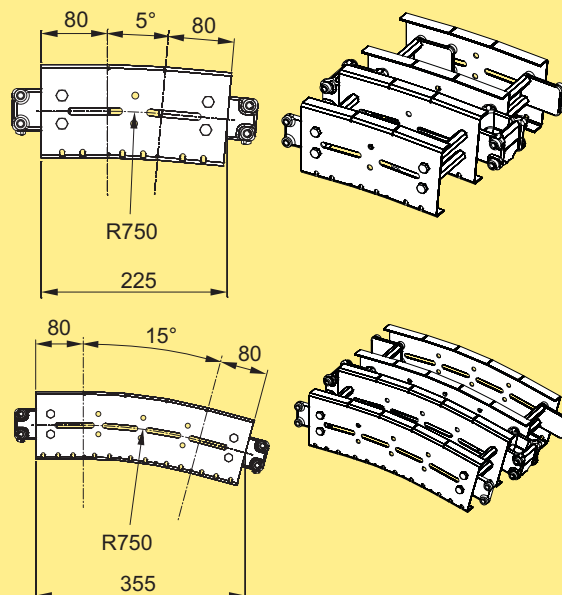


Vertical bend, pos., 5°
Vertical bend, pos., 15°

XBBVX 5A300R7P
XBBVX 15A300R7P

Effective track length (top + bottom): 5°: 0,50 m, 15°: 0,75 m

Vertical bend, negative angle

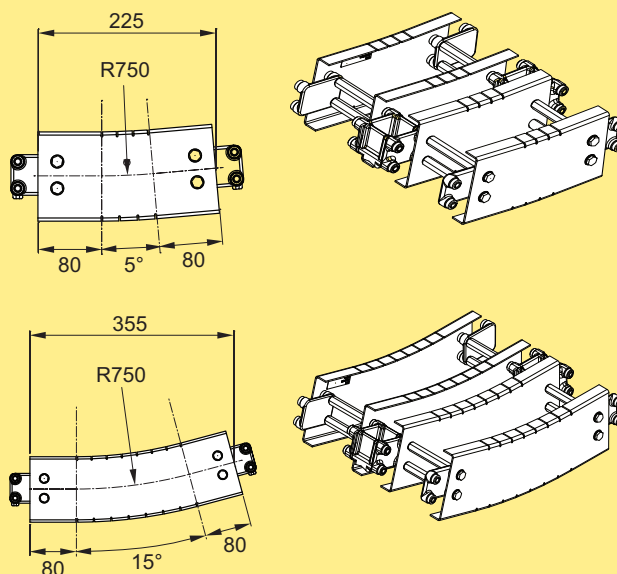


Vertical bend, neg., 5°
Vertical bend, neg., 15°

XBBVX 5A300R7N
XBBVX 15A300R7N

Effective track length (top + bottom): 5°: 0,50 m, 15°: 0,75 m

Vertical bend, positive angle

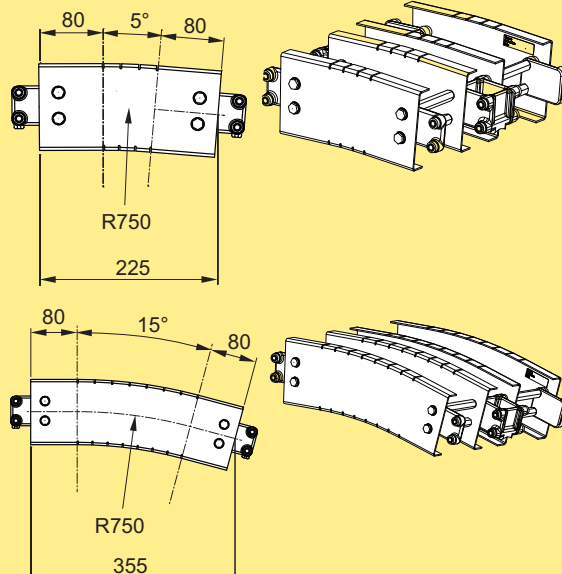


Vertical bend, pos., 5°
Vertical bend, pos., 15°

XBBVX 5A300R7PC
XBBVX 15A300R7PC

Effective track length (top + bottom): 5°: 0,50 m, 15°: 0,75 m

Vertical bend, negative angle



Vertical bend, neg., 5°
Vertical bend, neg., 15°

XBBVX 5A300R7NC
XBBVX 15A300R7NC

Effective track length (top + bottom): 5°: 0,50 m, 15°: 0,75 m

P0
X70X
X85X
X180X
X300X
WL 222X
WL 273X
WL 374X
WL 526X
WL 678X
CSX
GRX
FSTX
TR
APX
IDX

