

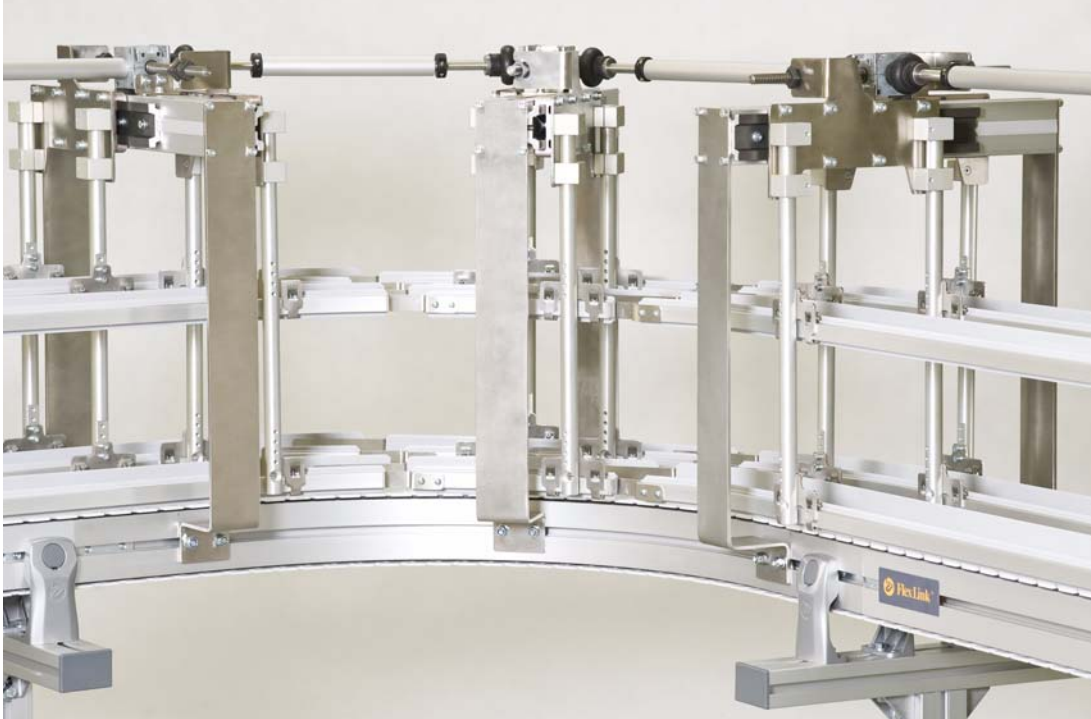
Manual adjustable guide rails



A FlexLink standard solution

5611EN-1

Manual adjustable guide rails system for quick product changeovers



The manual adjustable guiding system provides a very flexible way to add fast width adjustment for conveyors in a production line.

The system offers fast and easy resetting of product guiding systems in production flows. The effect is increased line efficiency and safe product distribution throughout the line.

The system has a modular design and consists of straight guide units for guiding the side guides on the straight sections, and bends units for controlling the side guide widths on plain bends. Drive kits for applying movement to the side guides, and transmission and shaft kits that connect each of the units. There are also available a range of vertical bend kits for adapting guide rails for angled conveyors and additional items that allow for the side guides widths to be reduced in addition to the max/min range highlighted in the technical specification.

There are two configurations of the guide unit available: one above the conveyor (configuration 1), and one below the conveyor (configuration 2).

Configuration 1 is available in either one lane, two lane or four lane versions. There are two different heights available for configuration 1

Configuration 2 is available in a one lane version only.

Bend units are supplied assembled with the relevant plain bend modules.

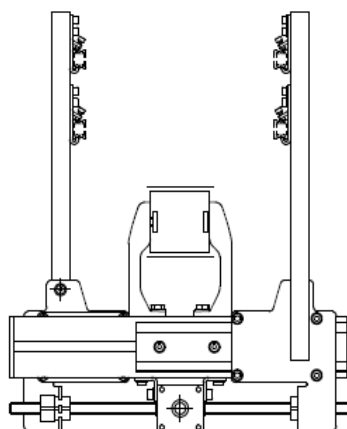
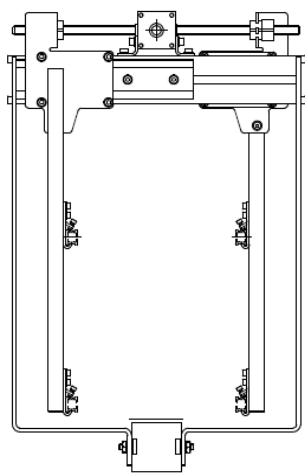
Standard features

- **Central adjustment:** With one hand wheel the complete length of conveyor side guides can be changed over in very short times. Changeover can be accessed from a floor mounted conveyor position or alternatively a floor mounted actuator kit will provide easy access for side guide adjustment on high level conveyors.
- **Side guide setting and calibration:** A dial gauge at the actuator position ensures accurate and repeatable adjustment.
- **Robust design:** The system is robust and designed to handle heavy products in accumulation.
- **Guide rail options:** The adjusting mechanism has been designed for use with either heavy or light guide rails. Guide rails are only available for pre-assembled bends.

The options for guide rail are

- XCBL 3x15x44 - for heavy duty applications
- XLRS 3x15 - for light applications

See Page 8

Technical specification*Configuration 1**Configuration 2***Product width**

Min / Max product widths for configuration 1

XL 20 - 200 mm

X85 20 - 250 mm

XH 20 - 350 mm

XK 20 - 350 mm

X180 70 - 450 mm

X300 70 - 450 mm

Min / Max product widths for configuration 2

XL 30 - 200 mm

X85 50 - 250 mm

XH 70 - 350 mm

XK 70 - 350 mm

X180 144 - 450 mm

X300 264 - 450 mm

Loadings

Max vertical load - 100 N

Max horizontal load - 300 N

Max. distance between adjusting units

700 mm for XLRS 3x15

1000 mm for XCBL 3x15x44

Max numbers of adjusting units per adjusting hand wheel - 12 off

Part numbering – configuration strings

Below, three examples of text strings obtained from the configurator with explanations are presented.

- 1 Frame above conveyor, single lane, X85, height of frame 250 mm, guide rail type XCBL Lx15x44

Item no	AA	BB	CC
8042040	020	- 110	- 220

- 2 Frame underneath conveyor, single lane, X85 height of frame 400 mm, guide rail type XLRS 3x15

Item no	AA	BB	CC
8042042	020	- 120	- 210

- 3 Frame above conveyor, single lane bend, X85, height of frame 250 mm, guide rail type XCBL Lx15x44, bend angle 45° and bend radius 700.

Item no	AA	BB	CC	DD	EE
8042076	020	- 110	- 220	- 320	- 420

BB – Height of frame

110: 250 mm
120: 400 mm

CC – Guide rail type

210: XLRS 3x15
220: XCBL Lx15x44

DD – Bend angle

310: 30°
320: 45°
330: 60°
340: 90°
390: Special angle

EE – Bend radius

410: R500
420: R700
430: R1000
440: R1200
450: R1400
460: R1600
490: Special radius

Item no

Configuration 1 - Frame above conveyor

	Valid for conveyor system:
8042040 Single lane	XL, X85, XH, XK
8042044 Single lane	X180, X300
8042072 Single lane bend	XL, X85, XH, XK
8042076 Single lane bend	X180, X300
8042048 Twin lane	XL, X85, XH, XK
8042084 Twin lane bend	XL, X85, XH, XK
8042050 Four lane	XL, X85
8042086 Four lane bend	XL, X85

Configuration 2 - Frame underneath conveyor

8042042 Single lane	XL, X85, XH, XK
8042046 Single lane	X180, X300
8042079 Single lane bend	XL, X85, XH, XK
8042082 Single lane bend	X180, X300

Configurator keys

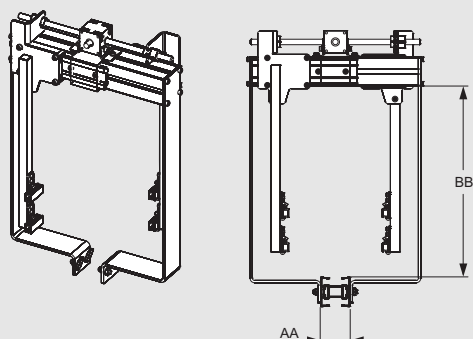
AA – Conveyor type

010: XL
020: X85
030: XH
040: XK
050: X180
060: X300

Manual adjustable guiding system

Configuration 1 - Frame above conveyor

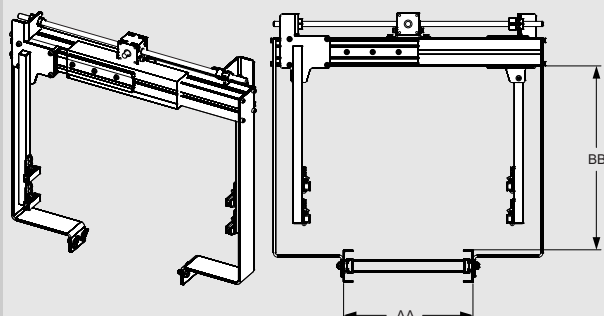
Single lane



Guide unit, single lane, frame above conveyor

8042040-AA-BB-CC

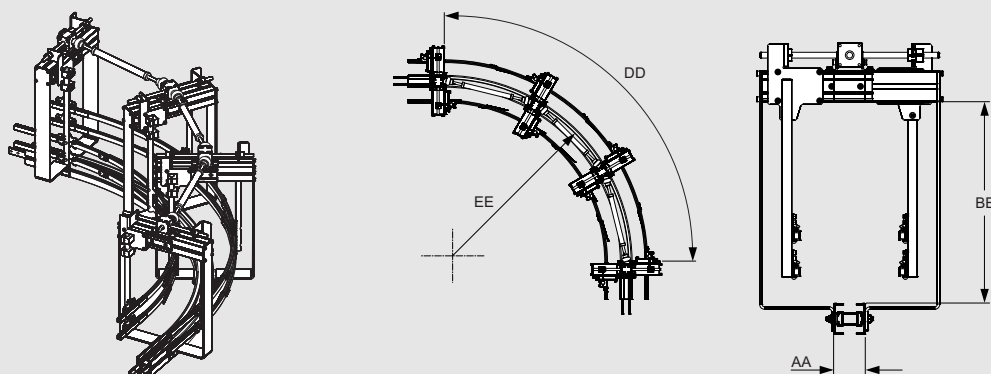
Single lane



Guide unit, single lane, frame above conveyor

8042044-AA-BB-CC

Single lane bend

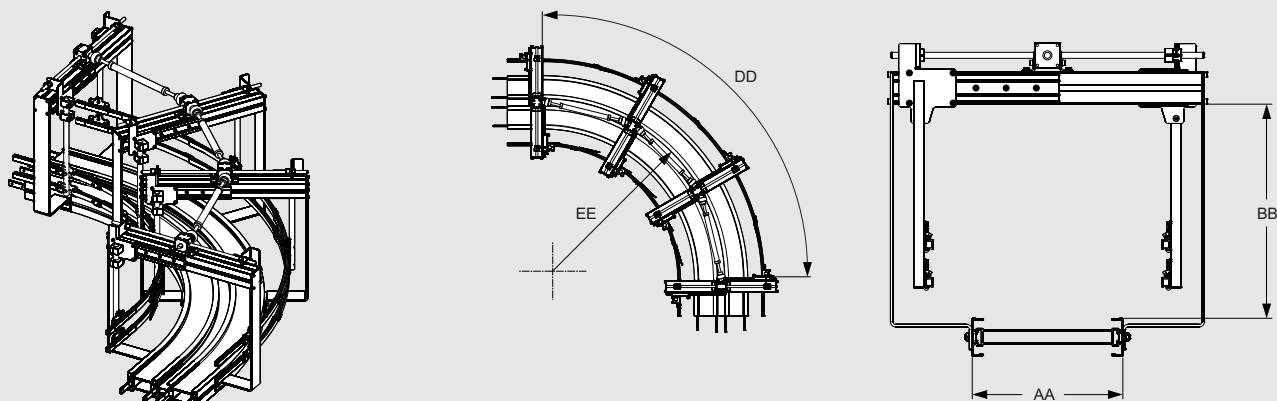


Guide unit, single lane bend, frame above conveyor

Note! Bend included

8042072-AA-BB-CC-DD-EE

Single lane bend

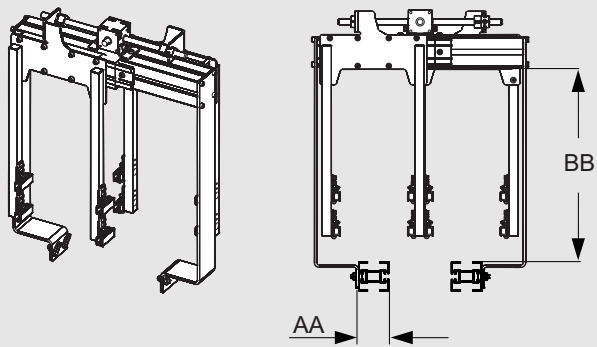


Guide unit, single lane bend, frame above conveyor

Note! Bend included

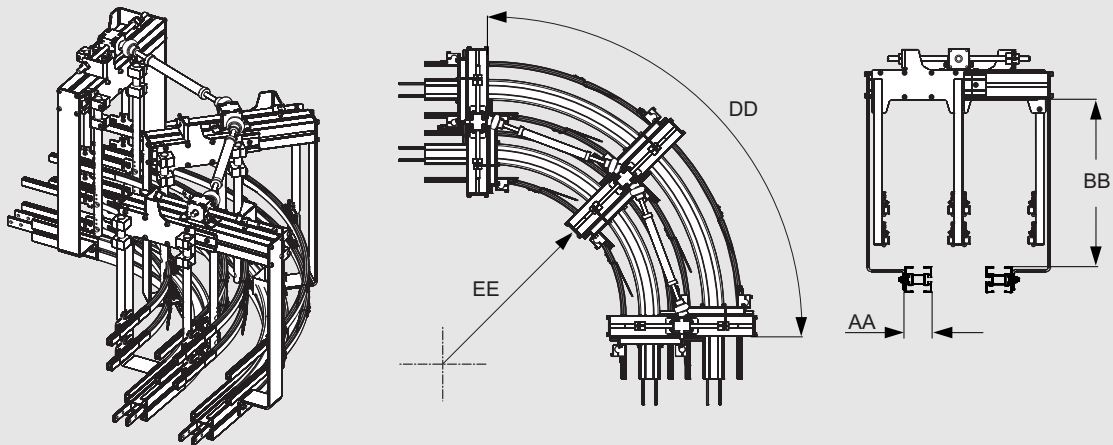
8042076-AA-BB-CC-DD-EE

Configuration 1 - Frame above conveyor (continued)

Twin lane

Guide unit, twin lane, frame
above conveyor

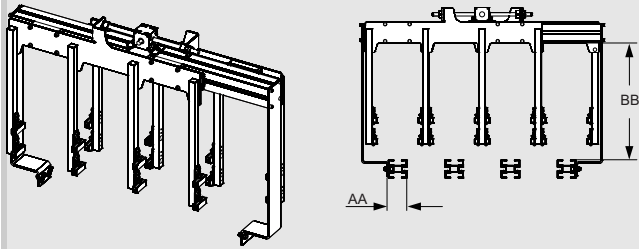
8042048-AA-BB-CC

Twin lane bend

Guide unit, twin lane bend, frame above conveyor
Note! Bends included

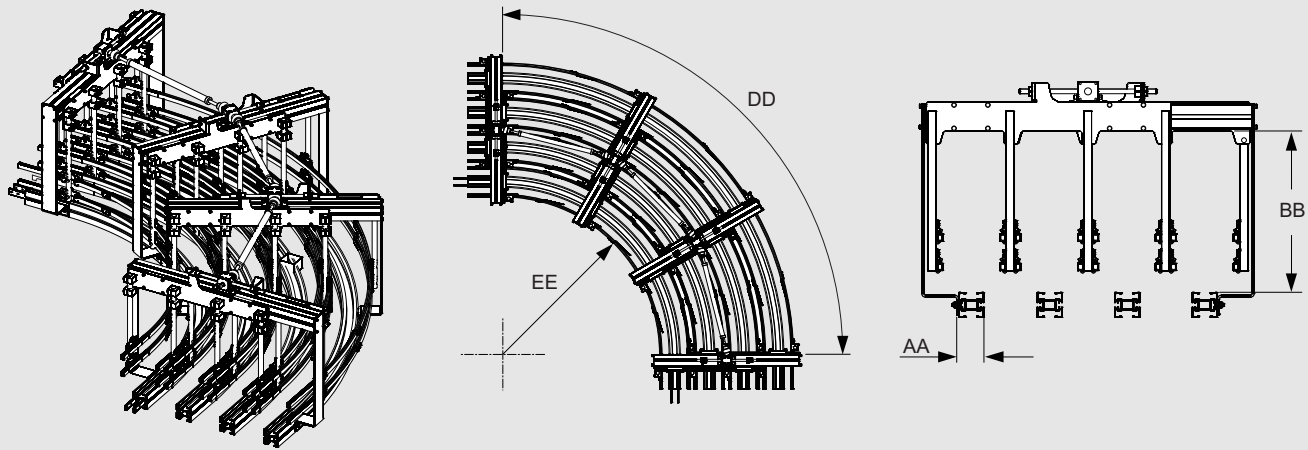
8042084-AA-BB-CC-DD-EE

Configuration 1 - Frame above conveyor (continued)

Four lane

Guide unit, four lane, frame
above conveyor

8042050-AA-BB-CC

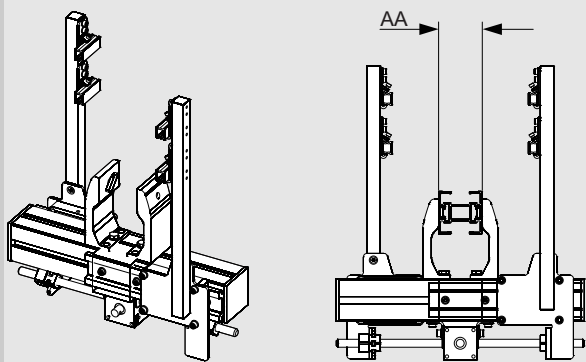
Four lane bend

Guide unit, four lane bend, frame above conveyor
Note! Bends included

8042086-AA-BB-CC-DD-EE

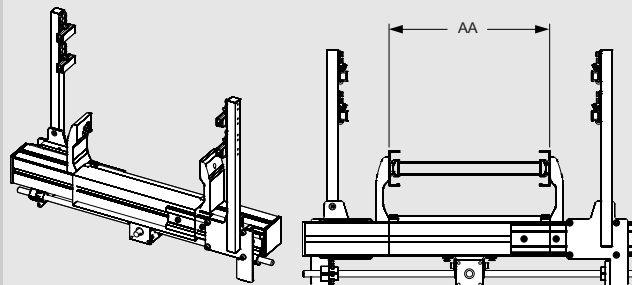
Configuration 2 - Frame underneath conveyor

Single lane



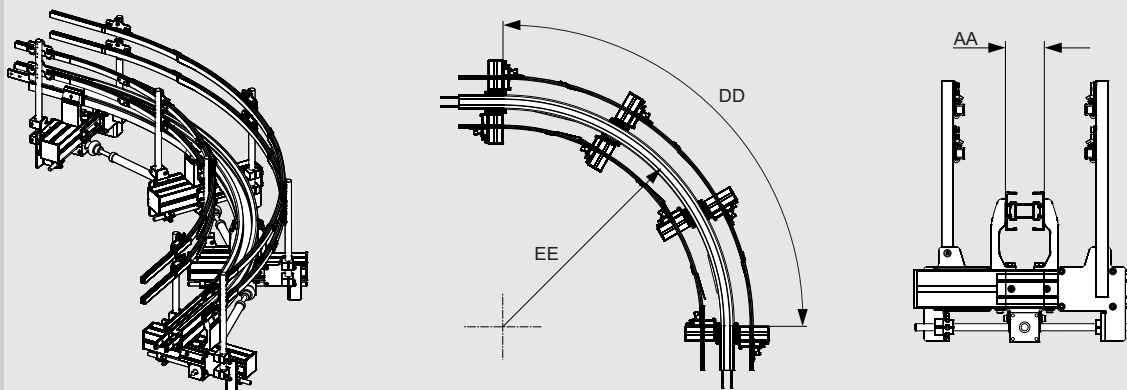
Guide unit, single lane, frame underneath conveyor **8042042-AA-CC**

Single lane



Guide unit, single lane, frame underneath conveyor **8042046-AA-CC**

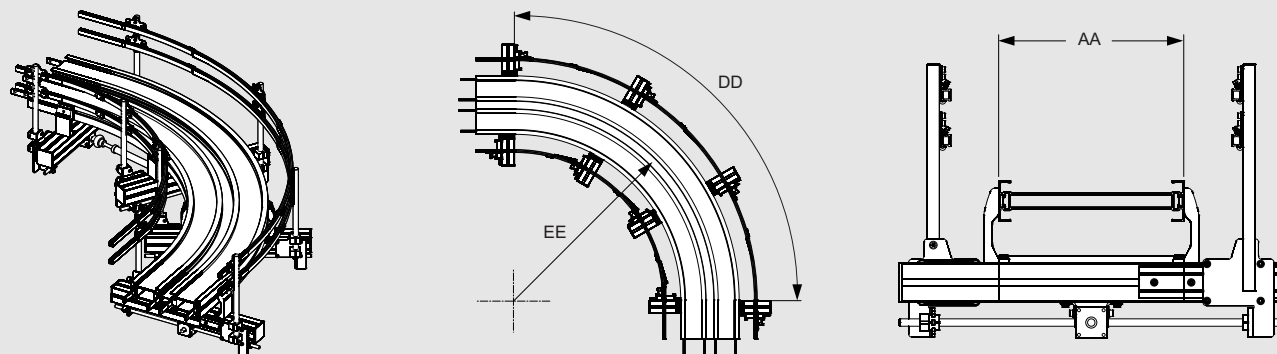
Single lane bend



Guide unit, single lane bend, frame underneath conveyor
Note! Bend included

8042079-AA-CC-DD-EE

Single lane bend



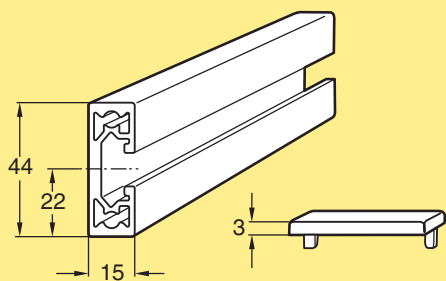
Guide unit, single lane bend, frame underneath conveyor
Note! Bend included

8042082-AA-CC-DD-EE

Guiding rail system components

Guide rail

Small beam 15×44



Small beam 15 mm × 44 mm

Lightweight design

Aluminium, anodized

Length 3 m (3030 ±5 mm)

Length to order (30- 3000 mm)

XCBL 3×15×44

XCBL L×15×44

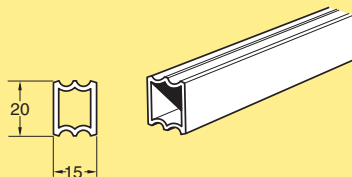
End cap, polyamide

XCBE 15×44*

Beam weight: 0,88 kg/m

*Note. Must be ordered in multiples of 10

Guide rail 15 mm, aluminium



Straight rail 15 mm

Aluminium, length 3 m

XLRS 3×15

End plug, 15 mm



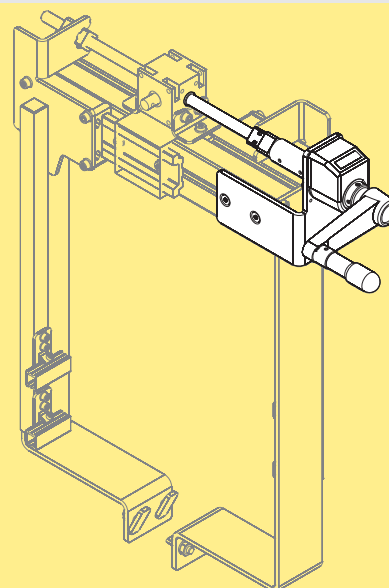
End plug, 15 mm

XLRE 15

Must be ordered in multiples of 10

Drive kit

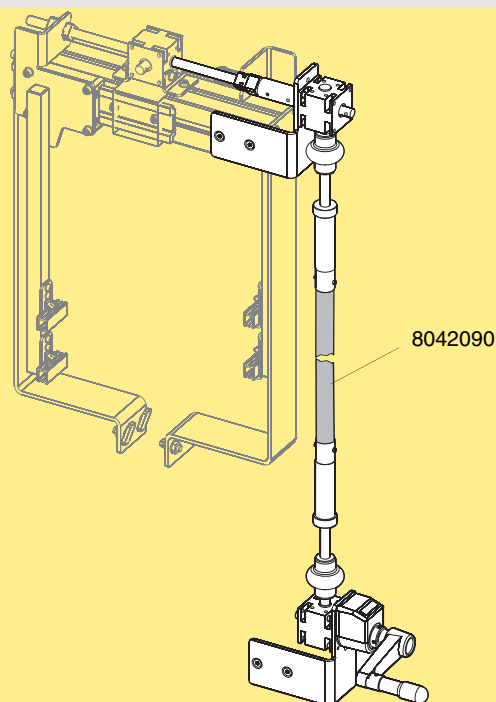
Drive kit



Drive kit

8042027

Drive Kit (suspended)



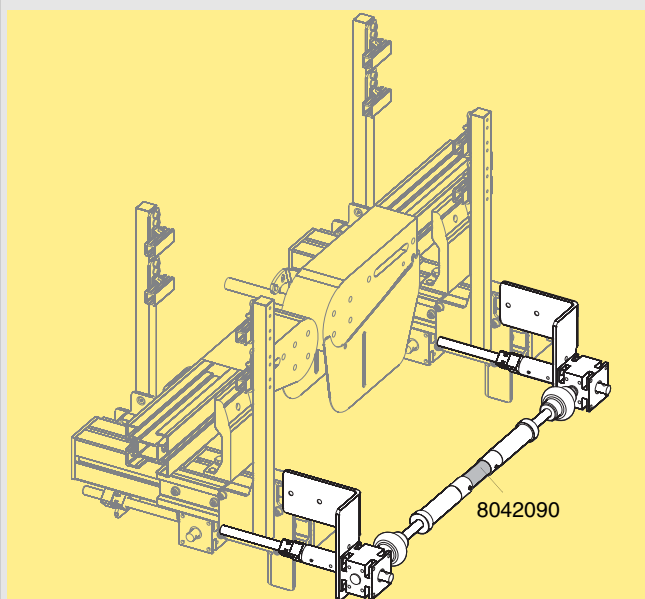
Drive kit (suspended)

8042028

Note! Use tube 8042090 for extension (not included), this tube can also be sourced locally

Conveyor bypass (outside)

Conveyor bypass (outside)

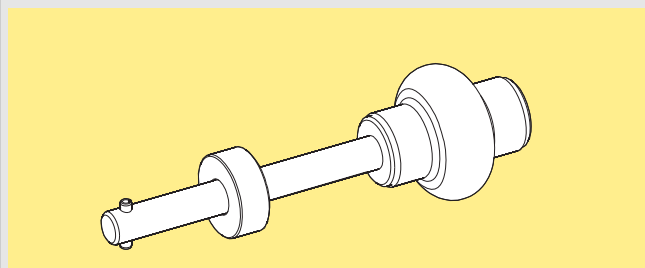


Conveyor bypass (outside)
Note! Use tube 8042090 for extension not included), this tube can also be sourced locally

8042024

Shaft kit

Join

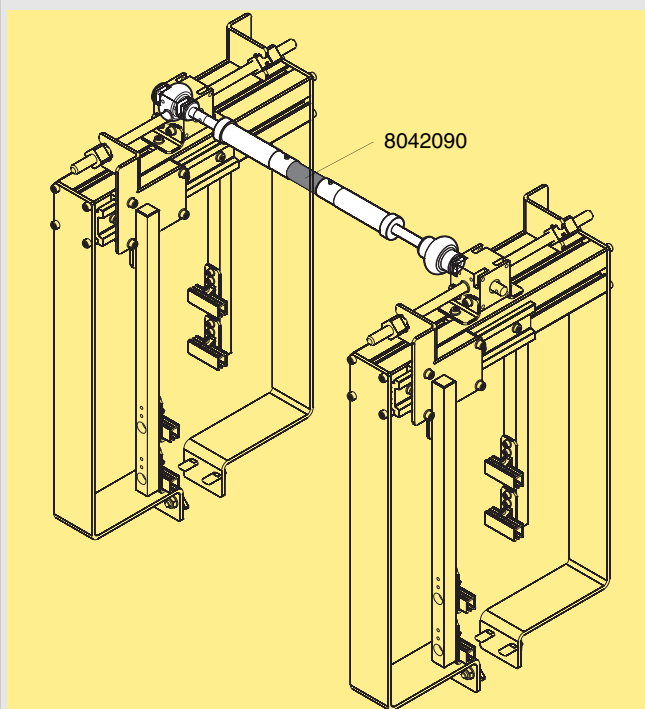


Join

8042022

Transmission kit

Transmission kit

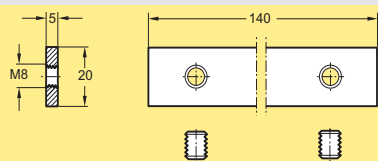


Transmission kit
Note! Use tube 8042090 for extension (not included), this tube can also be sourced locally

8042023

Guide rail components

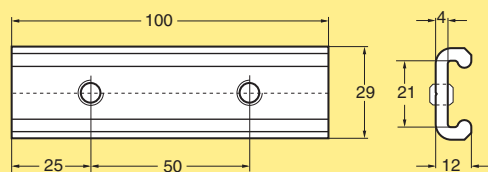
Connecting strip



Connecting strip with set screws **XLCJ 5x140**

Note. Must be ordered in multiples of 10

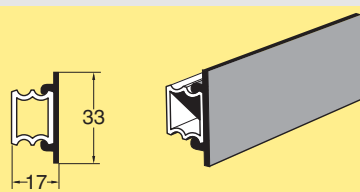
Connecting sleeve



Connecting sleeve **XLRJ 100**

Including set screws. For connecting two 10 mm or 15 mm XLRS guide rails end to end.

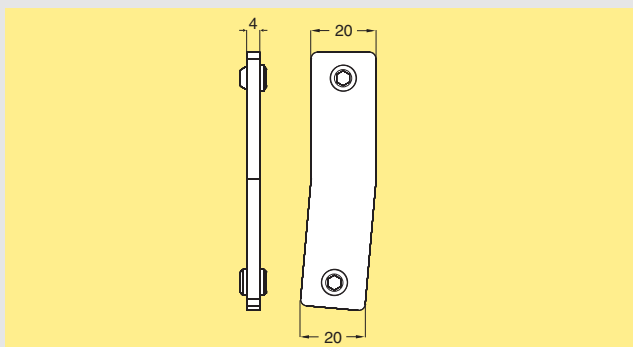
Guide rail cover, flanged, for 15 mm aluminium guide rail



Guide rail cover for 15 mm guide rail
Polyethylene, length 3 m, flanged **XLRT 3x33 D**

Vertical bends kit for XCBL 3x15x44

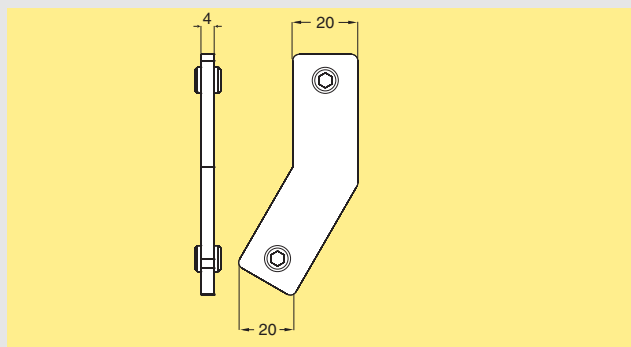
Corner fitting 5°



Corner fitting 5°
Steel, electro-zinc-plated **8042093**

*Note. Must be ordered in multiples of 10
Including set screws*

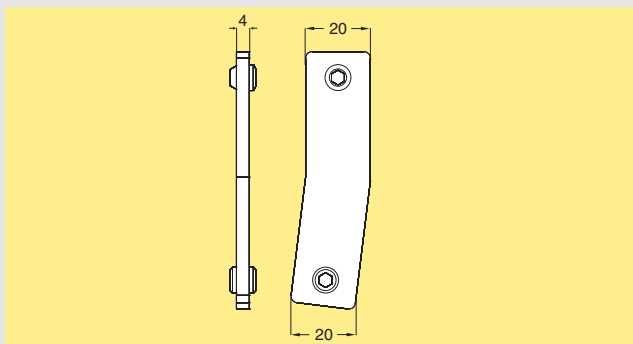
Corner fitting 30°



Corner fitting 30°
Steel, electro-zinc-plated **8042096**

*Note. Must be ordered in multiples of 10
Including set screws*

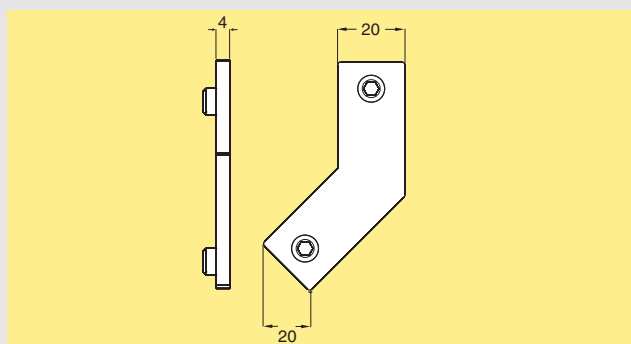
Corner fitting 7°



Corner fitting 7°
Steel, electro-zinc-plated **8042094**

*Note. Must be ordered in multiples of 10
Including set screws*

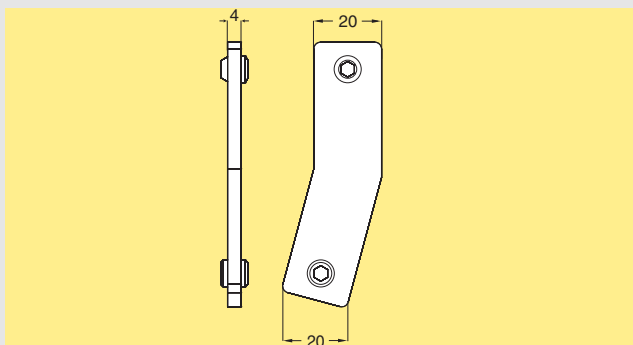
Corner fitting 45°



Corner fitting 45°
Steel, electro-zinc-plated **XMRW 20x45**

*Note. Must be ordered in multiples of 10
Including set screws*

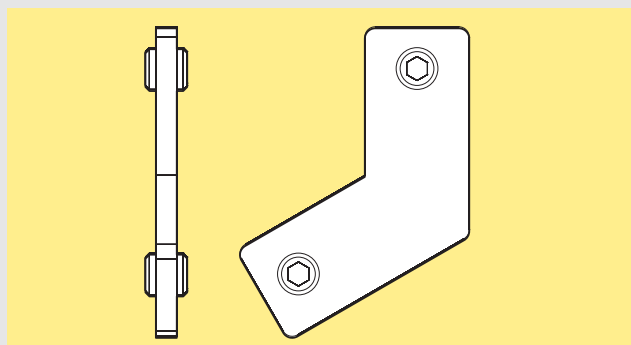
Corner fitting 15°



Corner fitting 15°
Steel, electro-zinc-plated **8042095**

*Note. Must be ordered in multiples of 10
Including set screws*

Corner fitting (custom angle)



Corner fitting, custom angle
Steel, electro-zinc-plated **8042097**

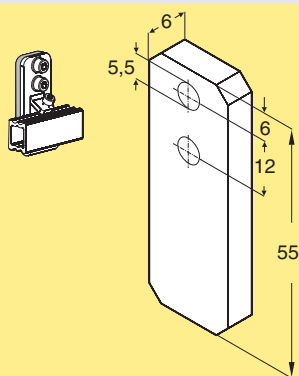
*Note. Must be ordered in multiples of 10
Including set screws*

Product width reduction

More information

Variations from standard modules are available and can be configured to suit specific customer requirements. Please contact your local FlexLink sales unit for more information.

Distance piece (aluminium)



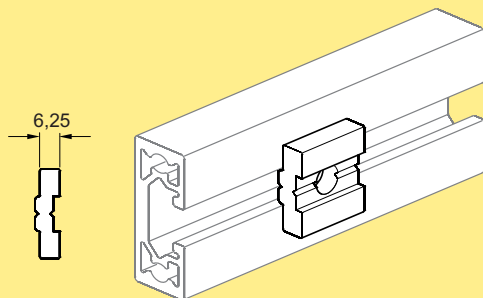
Distance piece (plastic POM C, black) **8042092**

Thickness 6 mm

Note. Fixing not provided

Must be ordered in multiples of 10

Distance piece (aluminium)



Distance piece (aluminium)

Thickness 6,25 mm

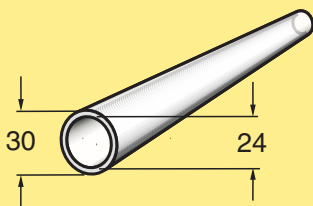
XLRD 6

Suitable, longer T-bolts

Note. Must be ordered in multiples of 10

Transmission tube (anodised)

Tube (anodized)



Tube

This tube can also be sourced locally

8042090

