

Conveyor system XTH

Contents

System information.....	1	Conveyor unit XTH	3
Systems example XTH	2	Transfer unit XTH	4

System information



System description

The XTH conveyor is a twin-track, flexible plastic chain pallet conveyor. The system is especially well suited for manual and automatic assembly and test systems in the automotive and electrical/electronics industries. The modular concept allows simplified engineering and ordering, as well as fast configuration together with plug and play capabilities for improved productivity.

Examples of application areas

Examples: Gearboxes, Computers, Sewing machines, Medical devices, Printers, Bearings.

Module concept

The standard modules can be split into three groups – conveyors, transfers and supports. Each module is quickly adaptable and reusable for future demands and can easily be integrated with FlexLink's large range of single strand pallet conveyor systems.

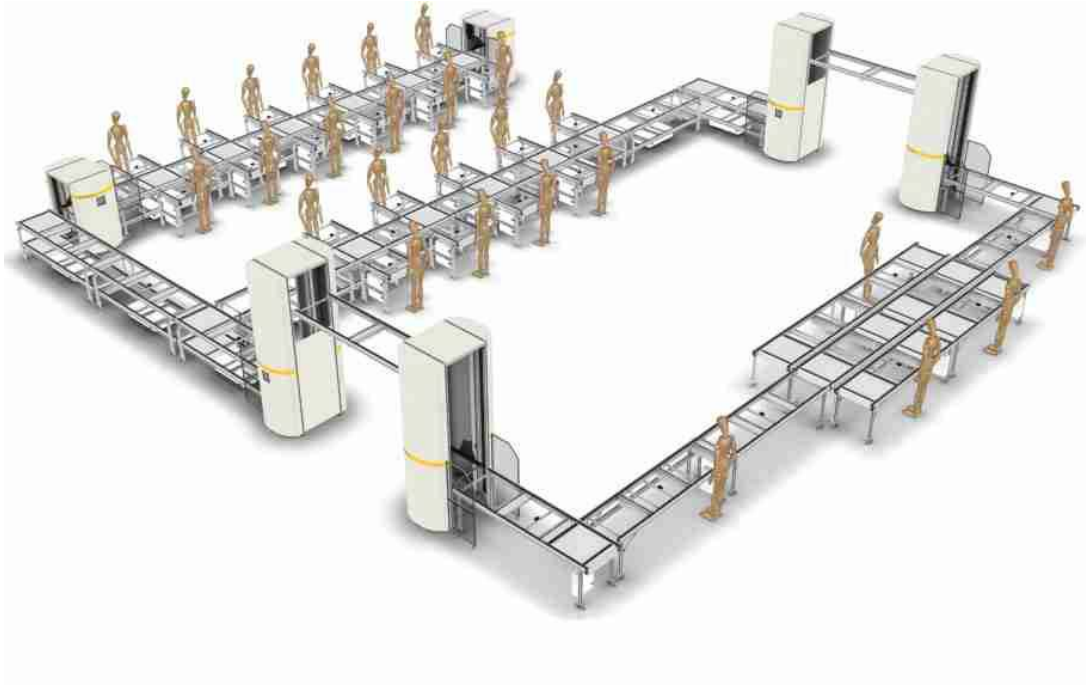
Pallets

FlexLink's standard chains and integrated guide rails systems allow for accumulation through the entire system, including bends, as well as easy and straightforward integration of stops, locate stations as well as transfer units with a minimum of controls.

Technical characteristics

Pallet sizes (WxL).....	320x320 mm to 800x400 mm
Maximum load on pallet.....	80 Kg
Maximum accumulated weight on conveyor at 5 m/min	500 Kg
Maximum conveyor length	7 m
Maximum conveyor speed	16 m/min

PO
CC
X45
XS
X65
X65P
X85
X85P
XH
XK
XKP
X180
X300
GR
CS
XT
XTH
WL
WK
XC
XF
XD
ELV
CTL
FST
TR
APX



Conveyor unit XTH



Conveyor unit *

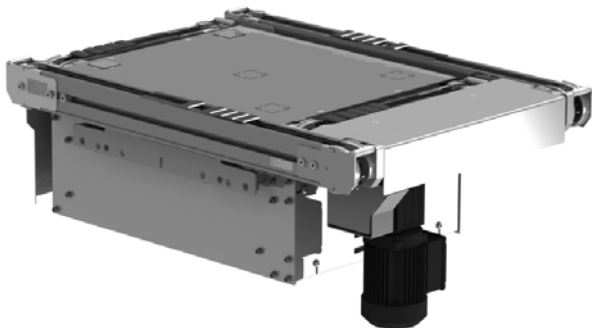
- Length: 470 mm - 7000 mm
- Pallet Width: 320, 400, 480, 640, 800
- Motor: Horizontal or vertical
- Conveyor speed:
 - 5, 10, 15 m/min (50Hz - 400V)
 - 6, 11, 16 m/min (60Hz - 480V)

5995996

* Use online configurator when ordering.

Transfer unit XTH

Transfer unit



Transfer unit *

5996003

- Pallet Size: 320x320, 400x400, 400x800, 480x480, 640x640, 800x400
- Motor: Horizontal or vertical
- Conveyor speed:
5, 10, 15 m/min (50Hz - 400V)
6, 11, 16 m/min (60Hz - 480V)

* Use online configurator when ordering.